

MAP FILE M52-56

FILED
RECEIVED

MAR 21 1974
COUNTY SURVEYOR
DOUGLAS COUNTY, OREGON

NE COR. L. WEIGHT D.L.C. N. 45
T. 29 S., R. 5 W., W.M.
COR. OF RECORD

T. 29 S., R. 5 W., W.M.
COR. OF RECORD

INITIAL POINT
P.R. WEAVER'S SUBDIVISION
2 1/2" I.P. FND.

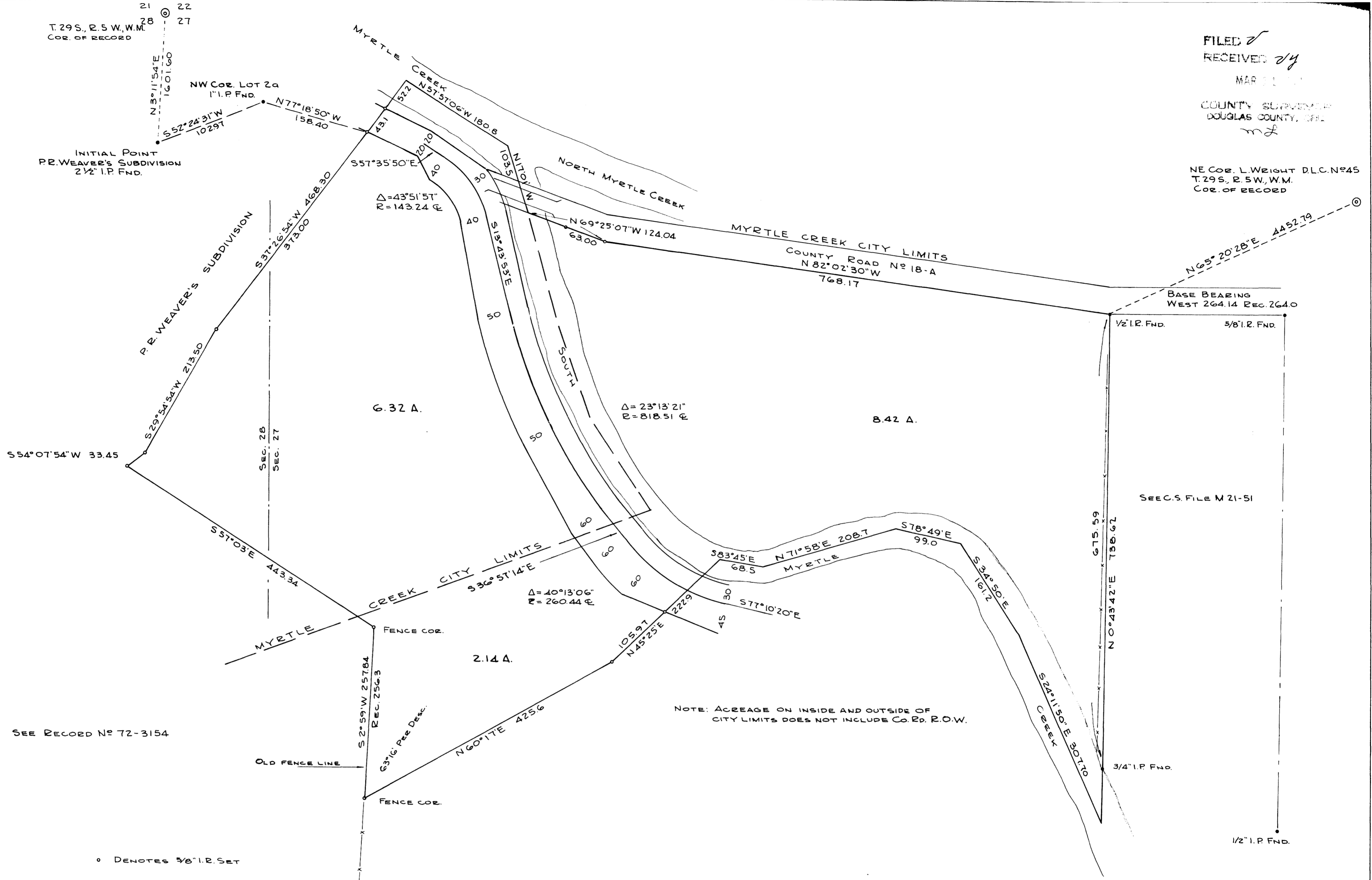
NW COR. LOT 2A
1" I.P. FND.

BASE BEARING
WEST 264.14 REC. 2640
1/2" I.P. FND. 5/8" I.P. FND.

SEEC.S. FILE M 21-51

3/4" I.P. FND.

1/2" I.P. FND.



SEE RECORD NO 72-3154

o DENOTES 3/8" I.P. SET

BOUNDARY SURVEY IN SECTIONS 27 AND 28, T. 29 S., R. 5 W., W.M.
SURVEYED FOR EDWARD G. AND MARY L. BYFORD
SURVEYED BY R. H. GEE MARCH, 1974
SCALE 1" = 100'



COUNTY SURVEYORS FILE DATA
DO NOT REMOVE FROM OFFICE

MAP FILE M52-56