

SURVEY IN SECTIONS 12 & 13, TOWNSHIP 27 SOUTH, RANGE 5 WEST, WILLAMETTE MERIDIAN

Surveyed for Pete Serafin by Don E. Garrett

February, 1974

o Set 5/8" I. Rod

COUNTY SURVEYORS FILE DATA
DO NOT REMOVE FROM OFFICE

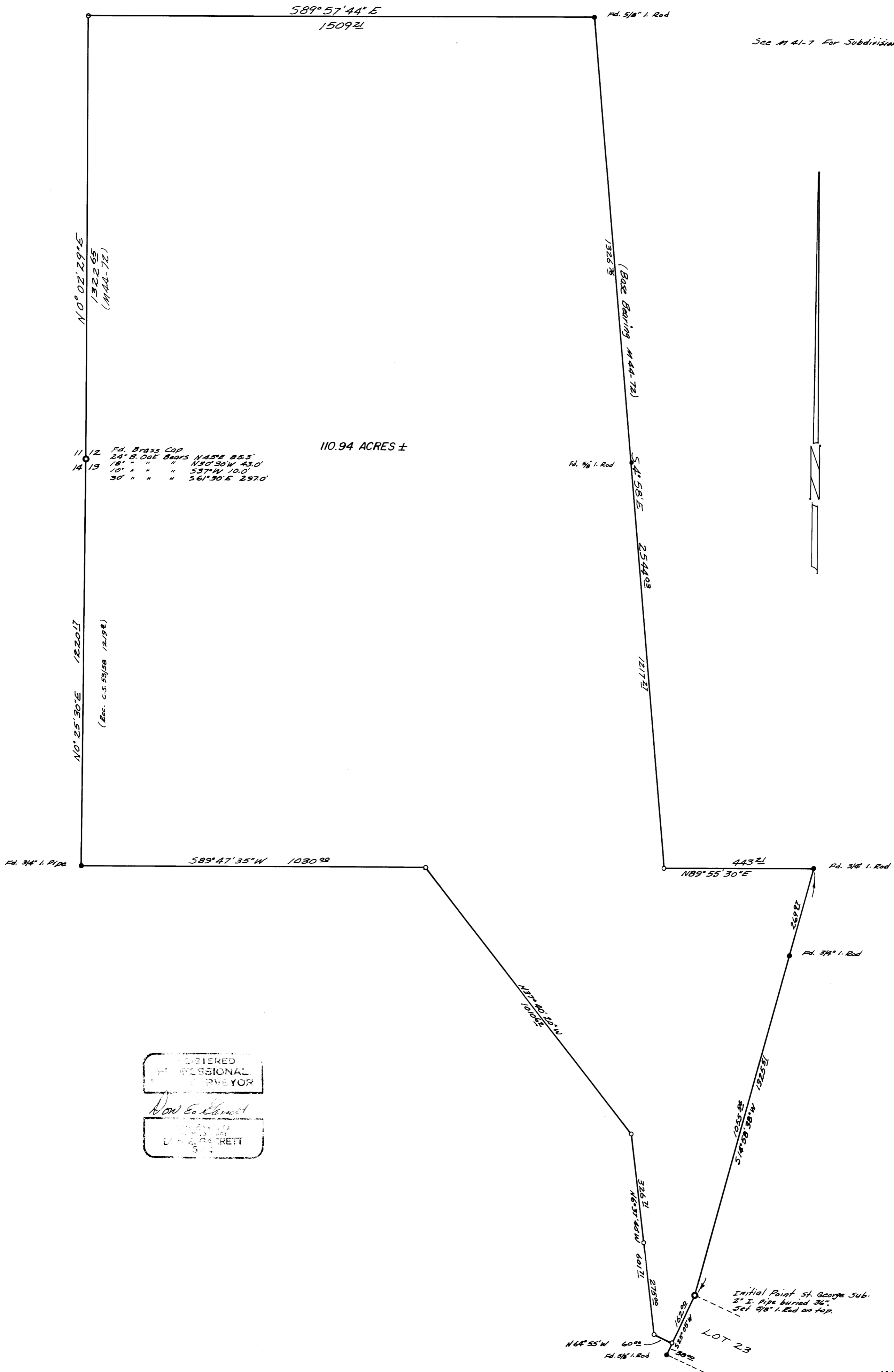
Scale 1" = 200'

FILED
RECEIVED 7/4

FEB 27 1974

COUNTY SURVEYOR
DOUGLAS COUNTY, OREGON

See M 41-7 For Subdivision of Sect. 12.



REGISTERED
PROFESSIONAL
SURVEYOR

Don E. Garrett

REGISTERED
PROFESSIONAL
SURVEYOR

DON E. GARRETT