

COUNTY SURVEYORS FILE DATA
DO NOT REMOVE FROM OFFICE

SURVEY TO ESTABLISH PROPERTY LINES LOT 16, BLOCK 2, POPLAR HOMESITES

SEC. 1, T 27 S, R 6 W. W. M.
SURVEYED FOR - GEO. LUOMA
SURVEYED BY - W. S. BARNES

FEB. 1974
SCALE 1" = 60'

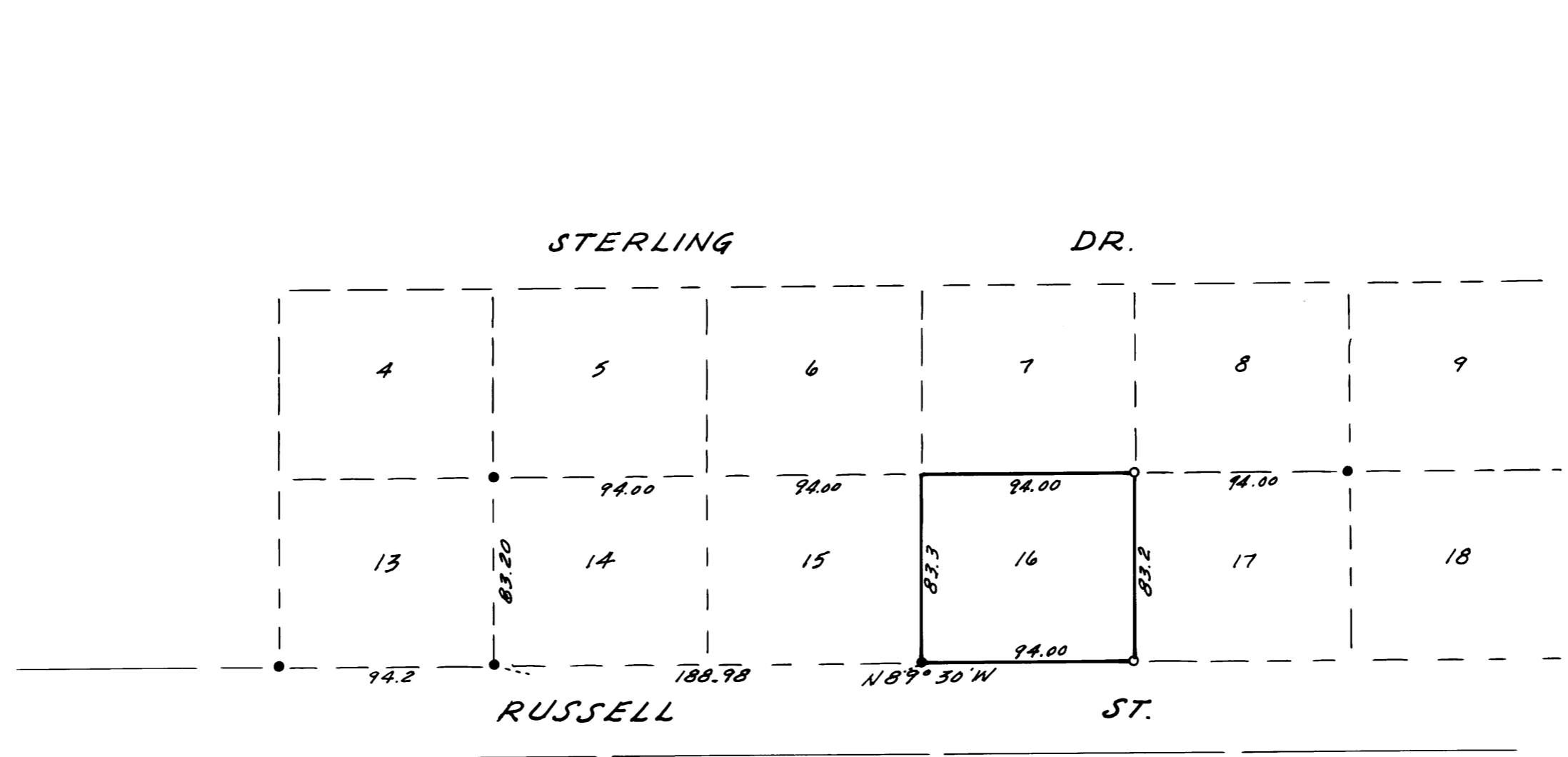
FILED ✓
RECEIVED Pd

FEB 22 1974

COUNTY SURVEYOR
DOUGLAS COUNTY, ORE.

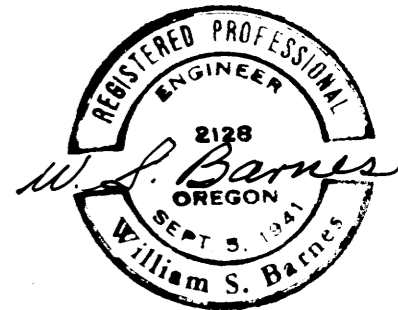
mf

MAP FILE 1752-42



- Monuments found
- 5/8" iron rods set.

Base bearing taken from north R/W line of Russell St.



MAP FILE 1752-42