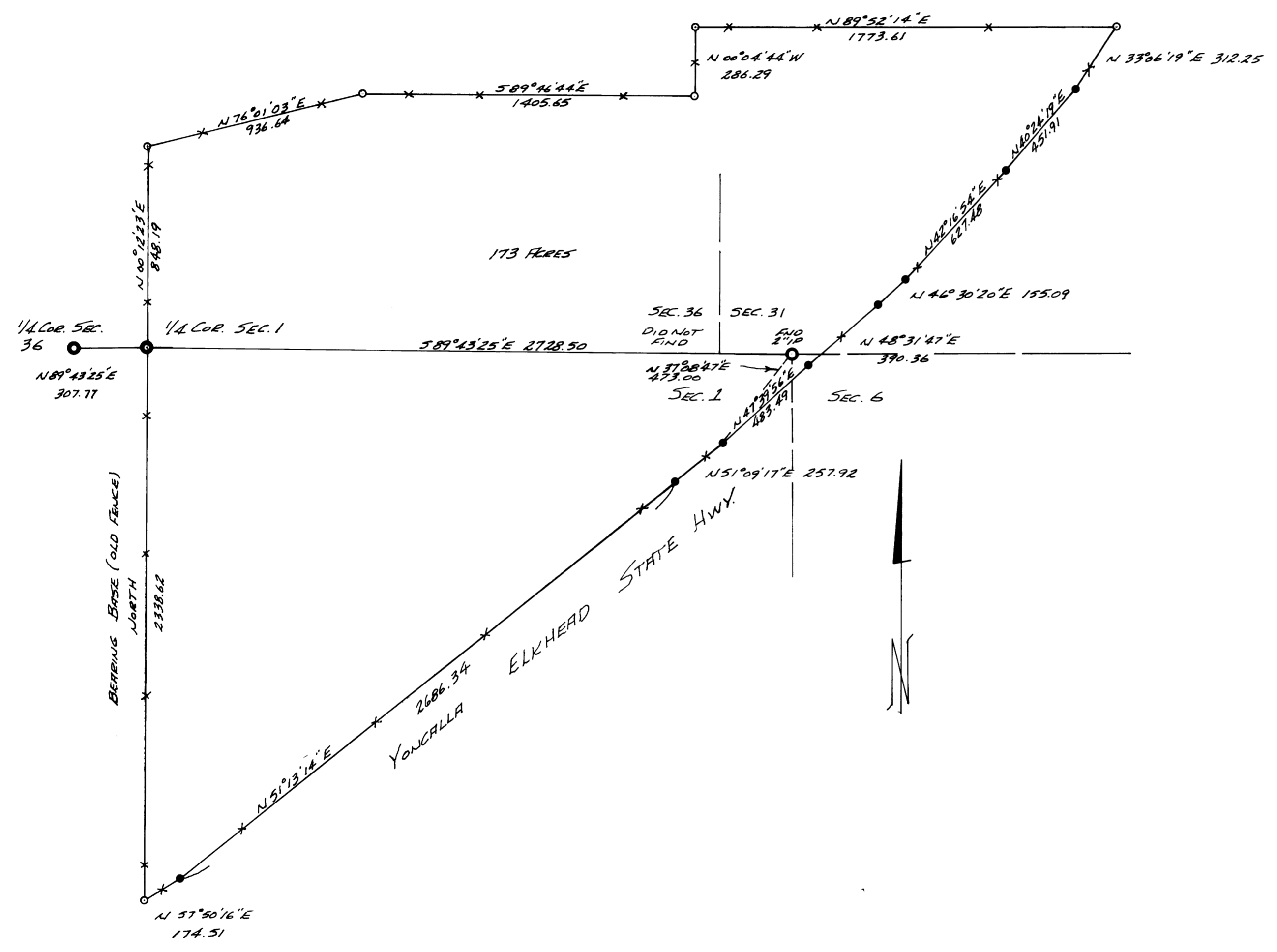


FILED  
 RECEIVED  
 FEB 21 1974  
 COUNTY SURVEYOR  
 DOUGLAS COUNTY, ORE.

MAP FILE M52-40



SURVEY FOR R.T. HOWARD  
 IN THE  
 SW 1/4 SEC. 31, T. 22 S., R. 4 W.  
 THE  
 SE 1/4 SEC. 36, T. 22 S., R. 5 W.  
 THE  
 NW 1/4 SEC. 6, T. 23 S., R. 4 W.  
 THE  
 NE 1/4 SEC. 1, T. 23 S., R. 5 W., W.M.  
 FEB, 1974 SCALE 1" = 400'

- DOUGLAS CO. BRASS CAP FOUND & B.T.'S
- ⊙ MONUMENT FOUND
- OSHD MONUMENT FOUND
- 5/8" IR SET

SURVEY BY  
 GREEN EMPIRE, INC.  
 ORRIDGE, OREGON

REGISTERED  
 PROFESSIONAL  
 LAND SURVEYOR  
 Malcolm M. Clark

OREGON  
 JULY 12, 1963  
 MALCOLM N. CLARK  
 601

COUNTY SURVEYORS FILE DATA  
 DO NOT REMOVE FROM OFFICE

MAP FILE M52-40