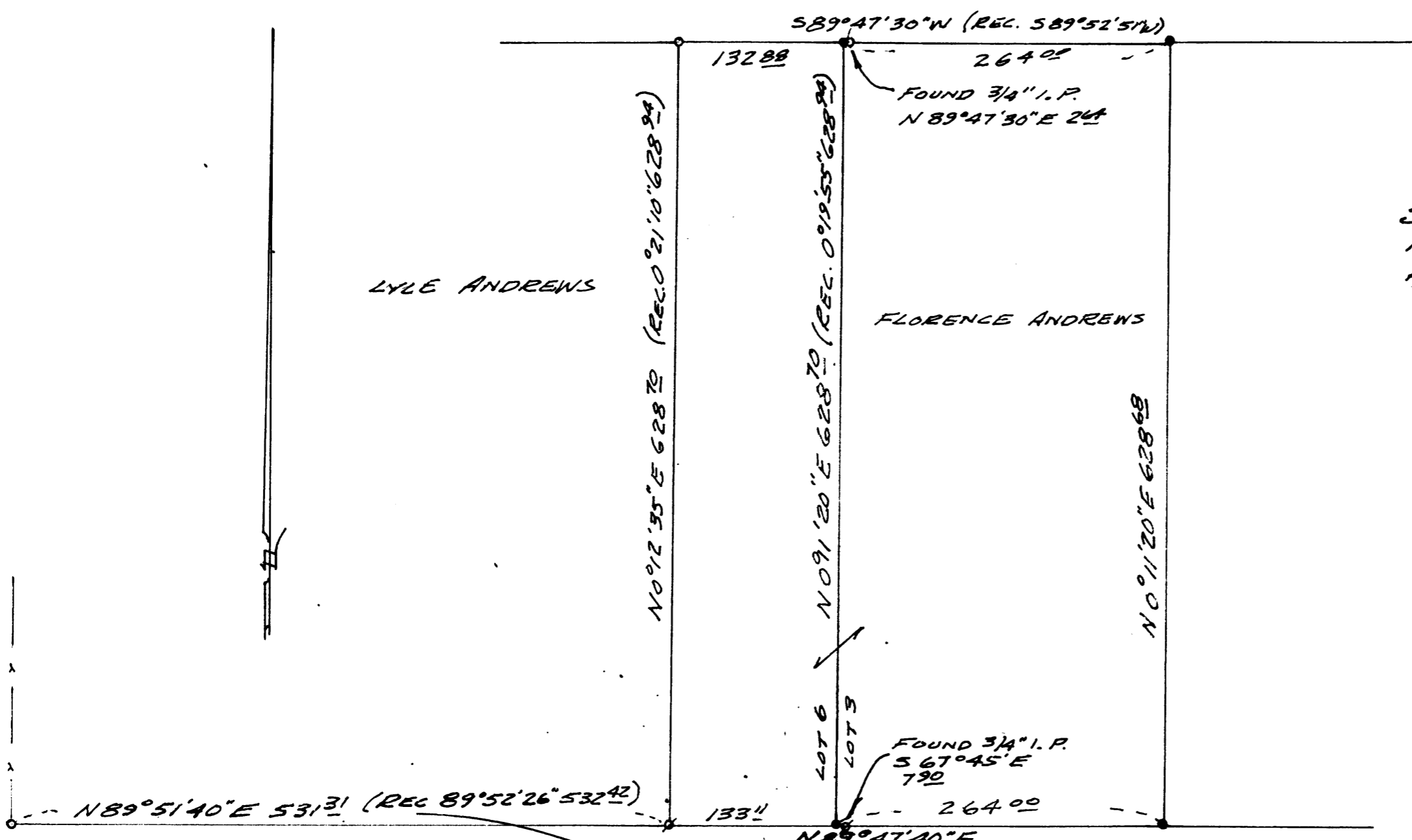


FILED ✓
RECEIVED ✓

FEB 20 1974

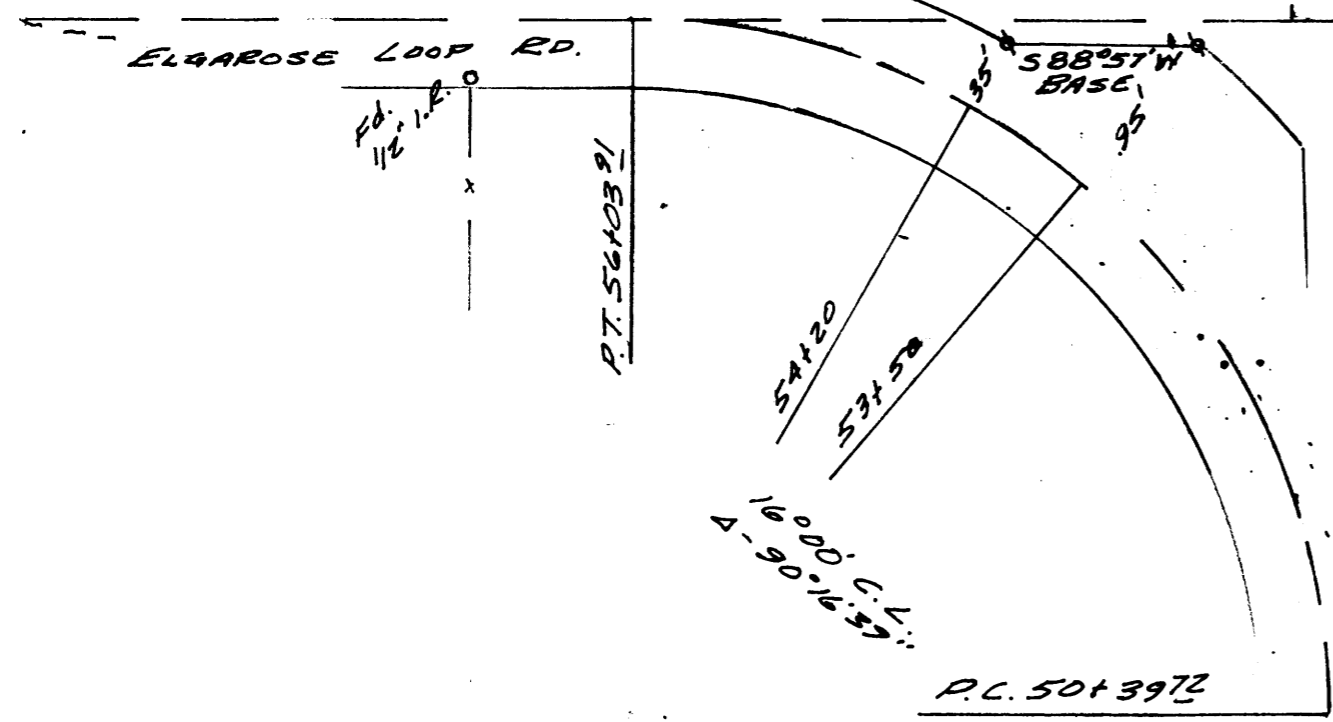
COUNTY SURVEYOR
DOUGLAS COUNTY, ORE
mf

MAP FILE M.S.R. - 37



SURVEY TO SET PROPERTY CORNERS
IN SEC. 35, T. 26 S., R. 7 W., W. 4 M.
PART OF LOTS 3 & 6, EDEN ORCHARDS
FOR MRS. FLORENCE B. ANDREWS
BY BRUCE ROGERS
FEB, 1974
1" = 100'

BRUCE ROGERS
COUNTY SURVEYOR
DOUGLAS COUNTY, ORE
B. ROGERS



N 89° 47' 40" E 1330.55'
(REC. N 89° 52' 26" E 1331.06)

SEC. 35
45' BRASS CAP WITNESS COR.

- - FOUND 3/4" IRON PIPE
 - ⊕ - FOUND 3/4" IRON ROD
 - ⊙ - FOUND COUNTY R/W PIN
 - - SET IRON PIPE
- RECORD BEARINGS & DIST.
FROM C.S. M.S. 11

COUNTY SURVEYORS FILE DATA
DO NOT REMOVE FROM OFFICE

MAP FILE M.S.R. - 37