

SURVEY IN SECTION 18, TOWNSHIP 27 SOUTH, RANGE 5 WEST, WILLAMETTE MERIDIAN
Lots 18, 19 & S1/2 20, Block 75, Subdivision A Kinney's Improved Plat
Surveyed for Harold L. Grout by Don E. Garrett
February, 1974

o Set 5/8" I. Rod

COUNTY SURVEYORS FILE DATA
 DO NOT REMOVE FROM OFFICE

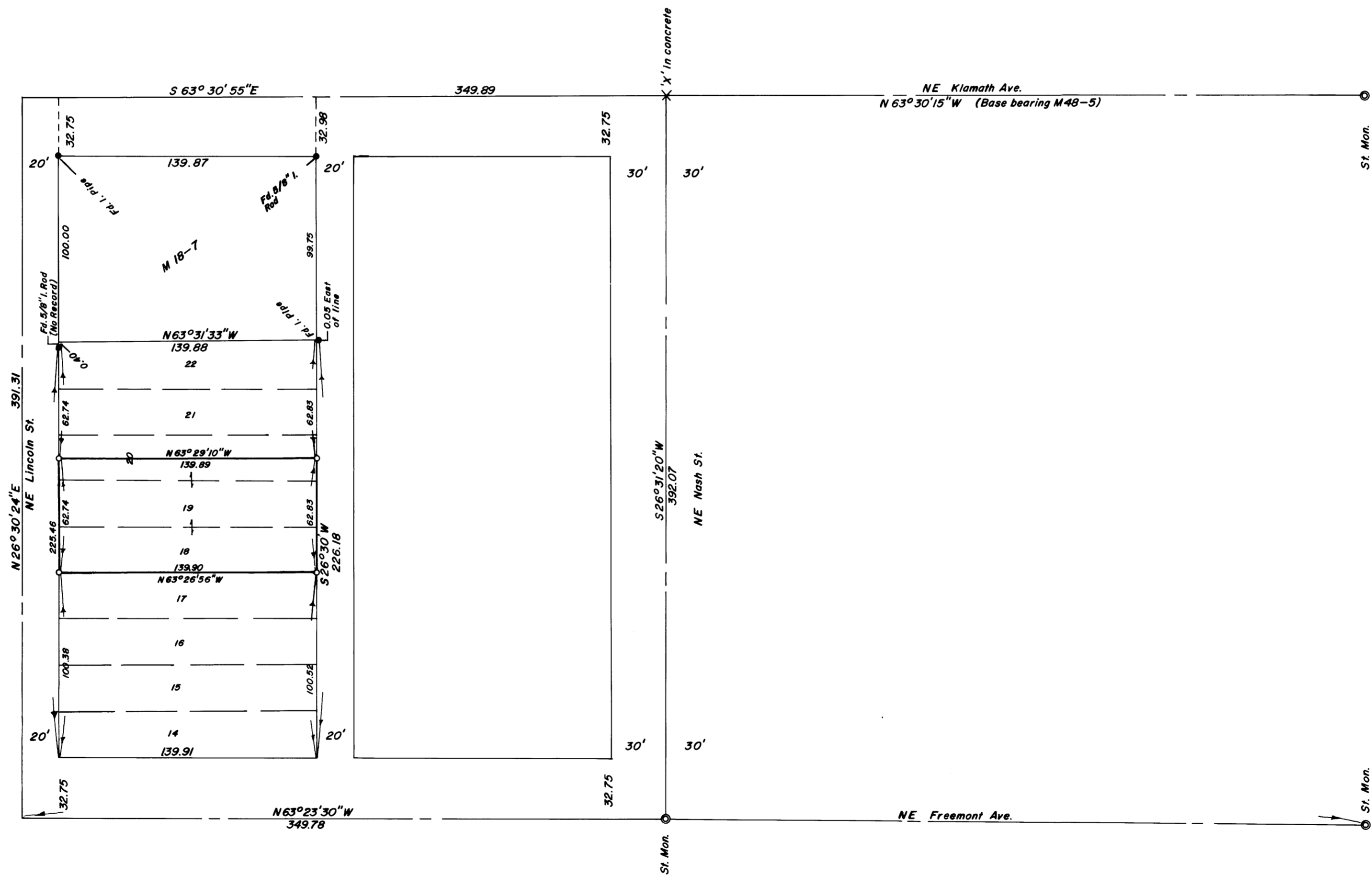
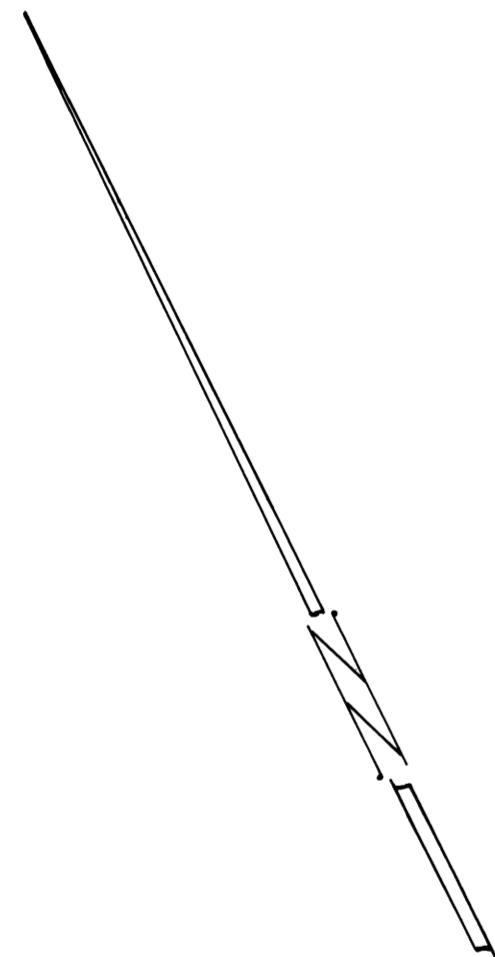
FILED ✓
 RECEIVED 2/4

FEB 7 1974

Scale 1" = 50'

COUNTY SURVEYOR
 DOUGLAS COUNTY, ORE.

M52 - 34



REGISTERED
 PROFESSIONAL
 LAND SURVEYOR
 DON E. GARRETT
 544

M52 - 34