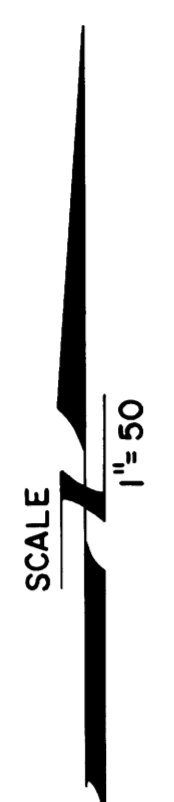
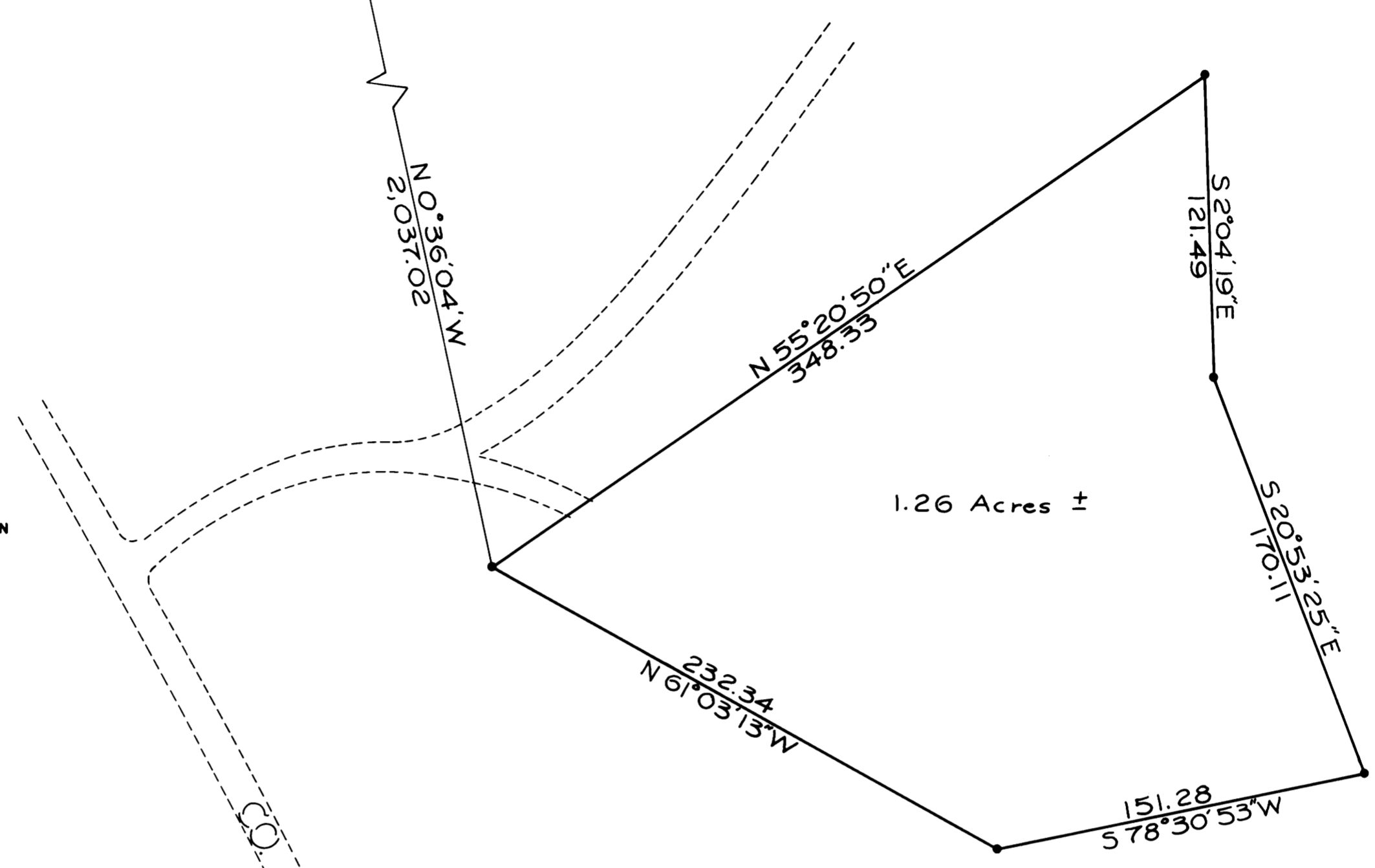


FILED
RECEIVED
FEB 1 1974
COUNTY SURVEYOR
DOUGLAS COUNTY, OREGON
m

4 17
20 COR.
Fd. Brass Cap
Marked C. S. Office
1958 T23S R7W W.M.



NOTE: BEARINGS AND DISTANCES SHOWN
ARE TRUE. SURVEY BASED ON THE OREGON
STATE PLANE COORDINATE SYSTEM
SOUTH ZONE, USING RIVER TRAVERSE
U-39 & U-41



SURVEY FOR SPARKS QUARRY SITE IN SEC. 20 T23S R7W W.M. SURVEYED BY THE DOUGLAS COUNTY ROAD DEPT. SURVEYED JAN. 1, 1974

● - DENOTES SET 5/8 IRON ROD



U-39
703,257.57 N
1,190,641.75 E

U-41
701,672.52
1,194,063.60

COUNTY SURVEYORS FILE DATA
DO NOT REMOVE FROM OFFICE