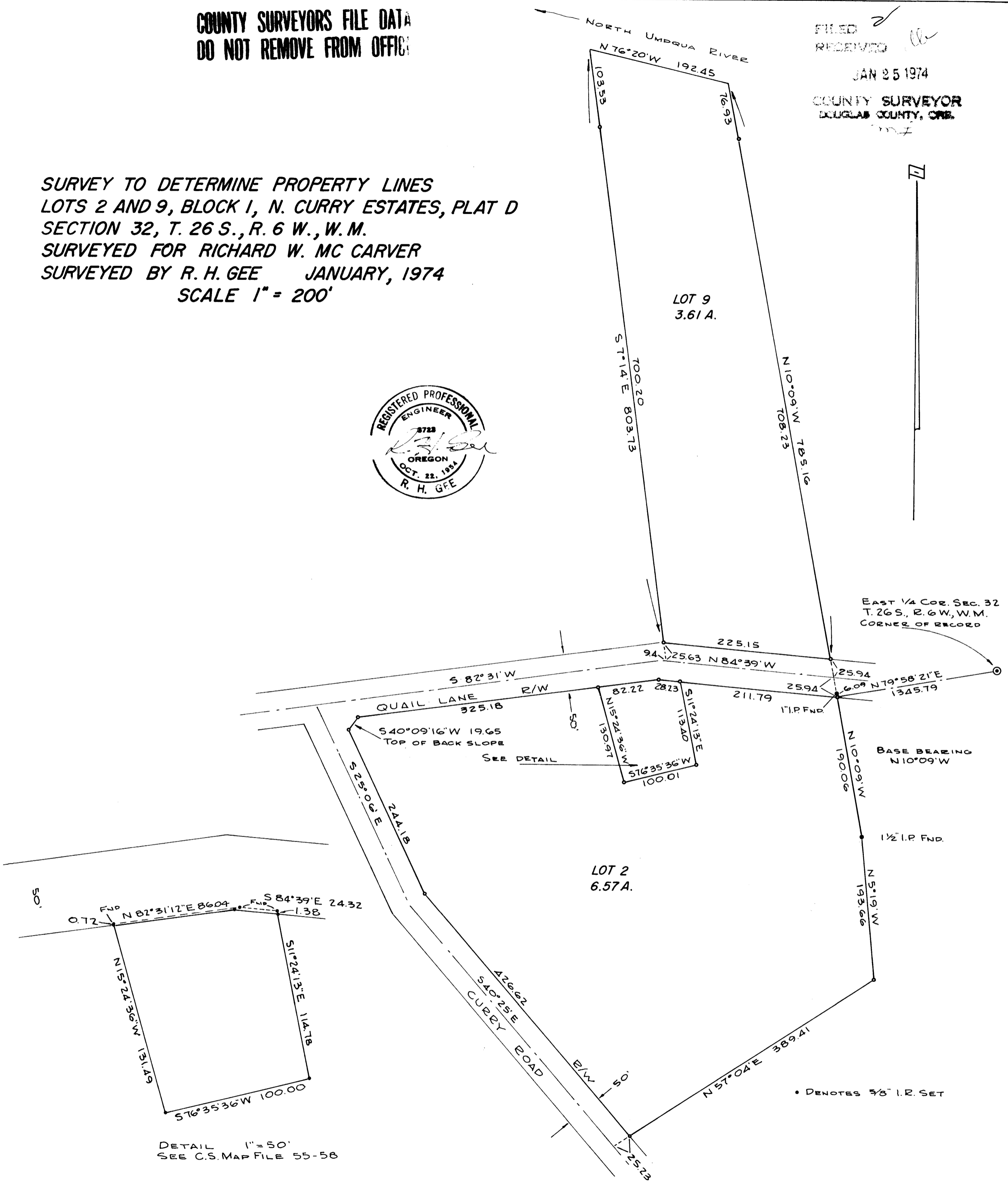


COUNTY SURVEYORS FILE DATA  
DO NOT REMOVE FROM OFFICE

FILED  
RECEIVED  
JAN 25 1974  
COUNTY SURVEYOR  
DOUGLAS COUNTY, ORE.  
M.F.

SURVEY TO DETERMINE PROPERTY LINES  
LOTS 2 AND 9, BLOCK 1, N. CURRY ESTATES, PLAT D  
SECTION 32, T. 26 S., R. 6 W., W.M.  
SURVEYED FOR RICHARD W. MC CARVER  
SURVEYED BY R. H. GEE JANUARY, 1974  
SCALE 1" = 200'



EAST 1/4 COR. SEC. 32  
T. 26 S., R. 6 W., W.M.  
CORNER OF RECORD

BASE BEARING  
N10°09'W

• DENOTES 3/8" I.R. SET

DETAIL 1" = 50'  
SEE C.S. MAP FILE 55-58