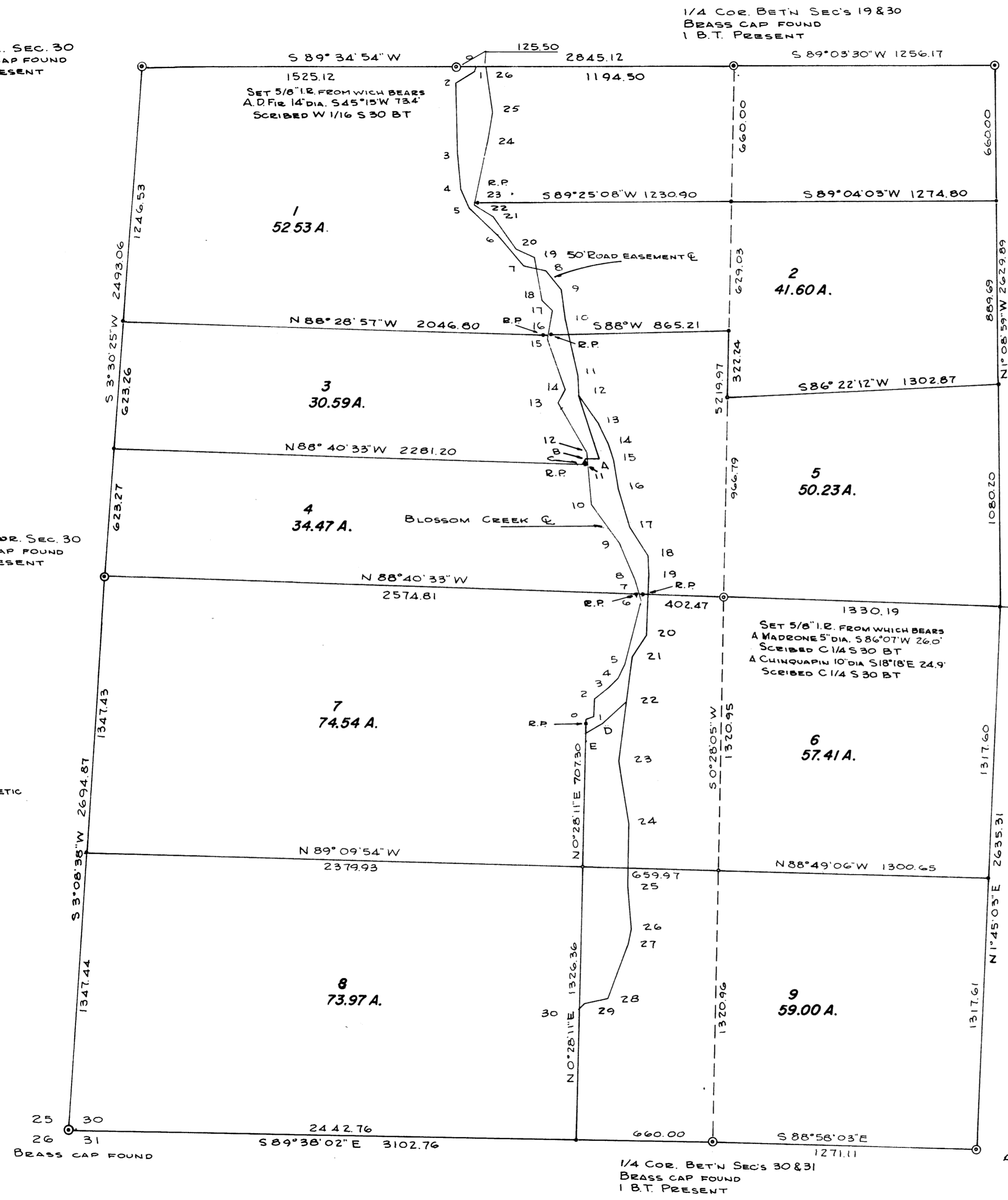


FILED
RECEIVED Pd
JAN 24 1974

COUNTY SURVEYOR
DOUGLAS COUNTY, ORE.

BLOSSOM CREEK CENTERLINE TRAVERSE		50' ROAD EASEMENT CENTERLINE TRAVERSE	
0	N 71° 05' 05" E 55.13	0	S 17° 24' 50" W 33.68
1	N 0° 17' 30" E 88.53	1	S 61° 12' 40" W 114.97
2	N 50° 54' 50" E 80.06	2	S 1° 28' 20" E 348.77
3	N 49° 31' 50" E 66.97	3	S 6° 35' 25" E 166.60
4	N 24° 17' 10" E 74.43	4	S 23° 04' 45" E 102.44
5	N 13° 44' 15" E 322.53	5	S 46° 21' 55" E 197.46
6	N 18° 02' 40" W 33.45	6	S 40° 47' 55" E 182.72
7	N 18° 02' 40" W 68.80	7	S 76° 58' 15" E 115.69
8	N 22° 49' 40" W 194.25	8	S 40° 22' 45" E 115.94
9	N 36° 52' 50" W 235.62	9	S 8° 01' 55" E 146.71
10	N 5° 03' W 196.73	10	S 12° 21' 45" E 277.02
11	N 5° 03' W 54.73	11	S 2° 44' 35" E 97.59
12	N 30° 26' 40" W 277.82	12	S 36° 13' 45" E 167.04
13	N 25° 11' 55" E 71.96	13	S 27° 16' 25" E 109.44
14	N 19° 12' 10" W 256.03	14	S 18° 12' 35" E 82.85
15	N 8° 04' 20" E 19.87	15	S 9° 23' 15" E 136.42
16	N 8° 04' 20" E 125.32	16	S 16° 30' 55" E 196.71
17	N 45° 14' 30" W 70.77	17	S 33° 16' 25" E 169.80
18	N 10° 46' 15" W 209.67	18	S 3° 13' 55" E 96.93
19	N 64° 41' W 100.99	19	S 9° 24' 55" W 291.86
20	N 36° 20' W 184.55	20	S 15° 04' 35" W 111.35
21	N 55° 47' 05" W 110.21	21	S 6° 43' 55" W 219.02
22	N 11° 11' 35" E 13.24	22	S 6° 43' 55" W 288.66
23	N 11° 11' 35" E 297.79	23	S 9° 49' E 309.25
24	N 9° 07' E 144.34	24	S 0° 06' 50" E 310.31
25	N 9° 38' 20" W 232.38	25	S 4° 27' 30" E 200.74
26		26	S 8° 44' 45" W 80.06
		27	S 20° 03' 55" W 279.86
		28	S 77° 34' 55" W 116.45
		29	S 45° 29' 55" W 42.25
		30	
		30' ROAD EASEMENT CENTERLINE TRAVERSE	
		12	S 20° 51' 45" W 328.00
		A	N 87° 22' W 74.27
		B	S 20° 31' 05" W 30.64
		C	
		22	S 46° 01' 30" W 160.77
		D	S 65° 10' 30" W 99.38
		E	



SURVEY IN SECTION 30, T.29 S., R. 6 W., W.M.
SURVEYED FOR WESTERN LAND MANAGEMENT INC.
SURVEYED BY R.H.GEE FEB. 1971 AND NOV. 1973
SCALE 1" = 400'



COUNTY SURVEYORS FILE DATA
DO NOT REMOVE FROM OFFICE

MAP FILE 52-25

MAP FILE 52-25