

COUNTY SURVEYORS FILE DATA
DO NOT REMOVE FROM OFFICE

SURVEYED FOR DEED DESCRIPTION FOR MORTGAGE PURPOSES SITUATED IN SECTION 18, T. 27S., R. 5W. SURVEYED FOR U.S. NATIONAL BANK SURVEYED BY BAUGHMAN SURVEYING SCALE 1" = 30'

JUNE 1971
JANUARY 1974

● FD. AXLE

○ SET 5/8" I.R.

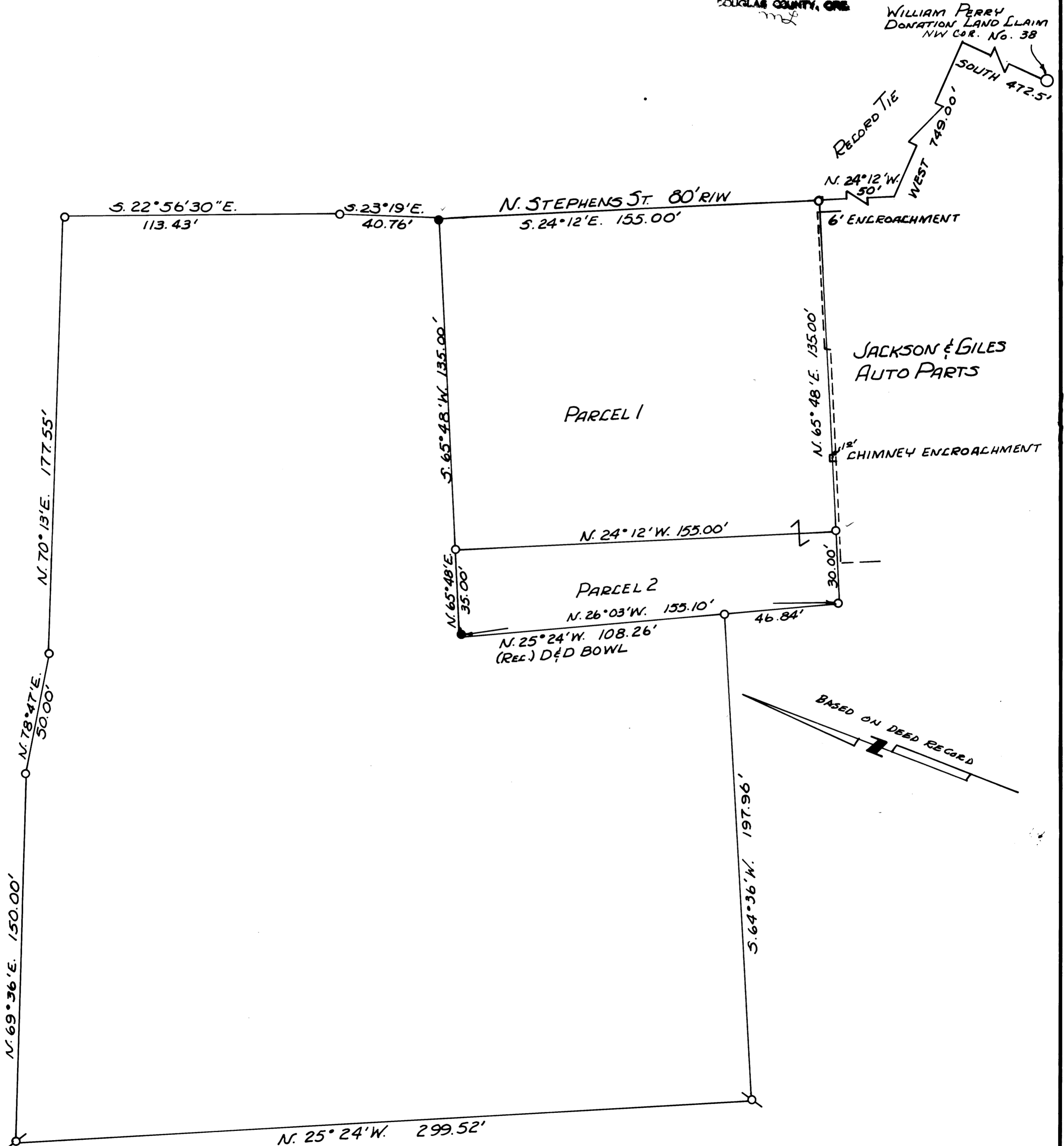
⊗ 5/8" I.R. SET BY BAUGHMAN SURVEYING for Cliff Aten

FILED ✓
RECEIVED Pd

JAN 21 1974

COUNTY SURVEYOR
DOUGLAS COUNTY, ORE

WILLIAM PERRY
DONATION LAND CLAIM
NW COR. No. 38



Alvin S. Baughman