

**SURVEY FOR DESCRIPTION OF ROAD ACCESS  
FOR ROSEBURG SCHOOL DISTRICT NO. 4  
IN SECTION 11, T.27S., R.6W. W.M.  
BY: BAUGHMAN SURVEYING SERVICE**

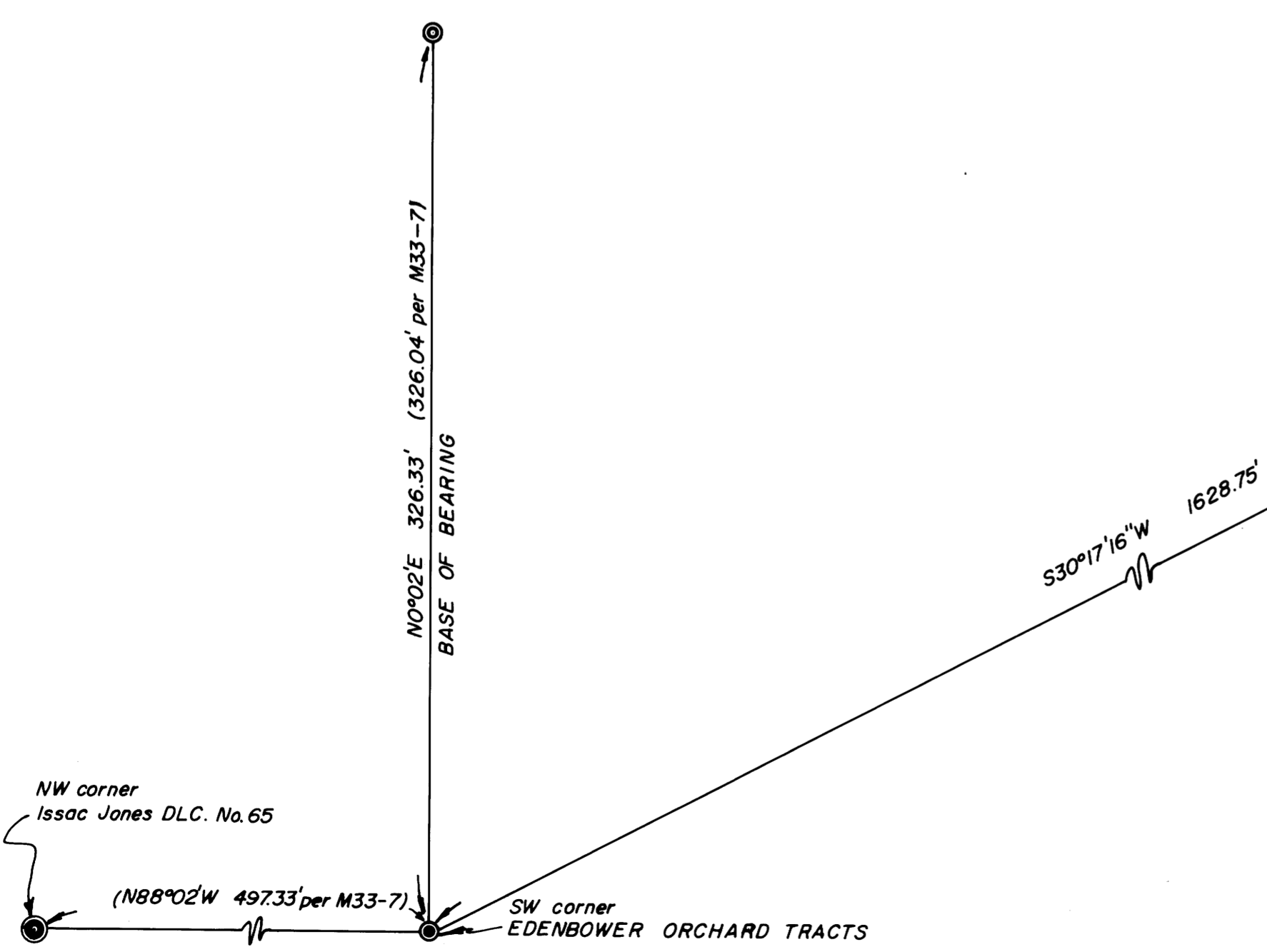
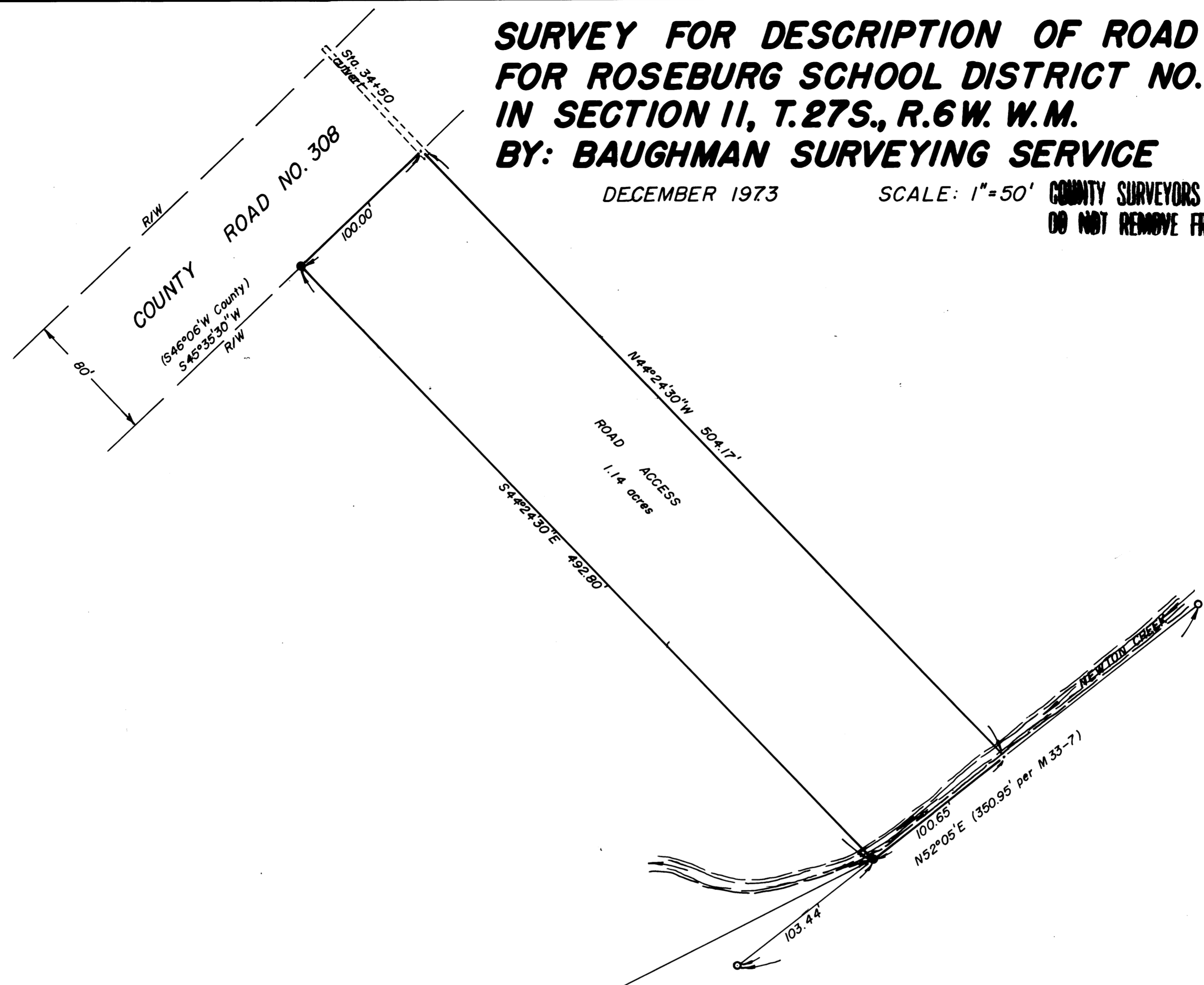
DECEMBER 1973

SCALE: 1"=50'

COUNTY SURVEYORS FILE DATA  
DO NOT REMOVE FROM OFFICE

FILED  
RECEIVED Pd  
JAN 21 1974  
COUNTY SURVEYOR  
CLATSOP COUNTY, ORE.  
mz

SEE REVISED  
Survey - M 53-11



**LEGEND**

- ⊙ — — DLC corner per M33-7
- — — Set 5/8" I.R.
- ⊙ — — Found 5/8" I.R.
- ⊙ — — Found 3/4" I.P.
- — — Not Found - Set per M33-7

REGISTERED  
PROFESSIONAL  
LAND SURVEYOR  
*Glenn S. Baughman*  
OREGON  
JULY 14, 1969  
GLENN S. BAUGHMAN  
536

MAP FILE 53-11-21