

SURVEY IN SECTION 12, TOWNSHIP 24 SOUTH, RANGE 7 WEST, WILLAMETTE MERIDIAN
Surveyed for Roy D. Scott by Don E. Garrett
January, 1974

COUNTY SURVEYORS FILE DATA
 DO NOT REMOVE FROM OFFICE

Scale 1" = 100'

○ Set 5/8" I. Rod
 ● Found 5/8" I. Rod

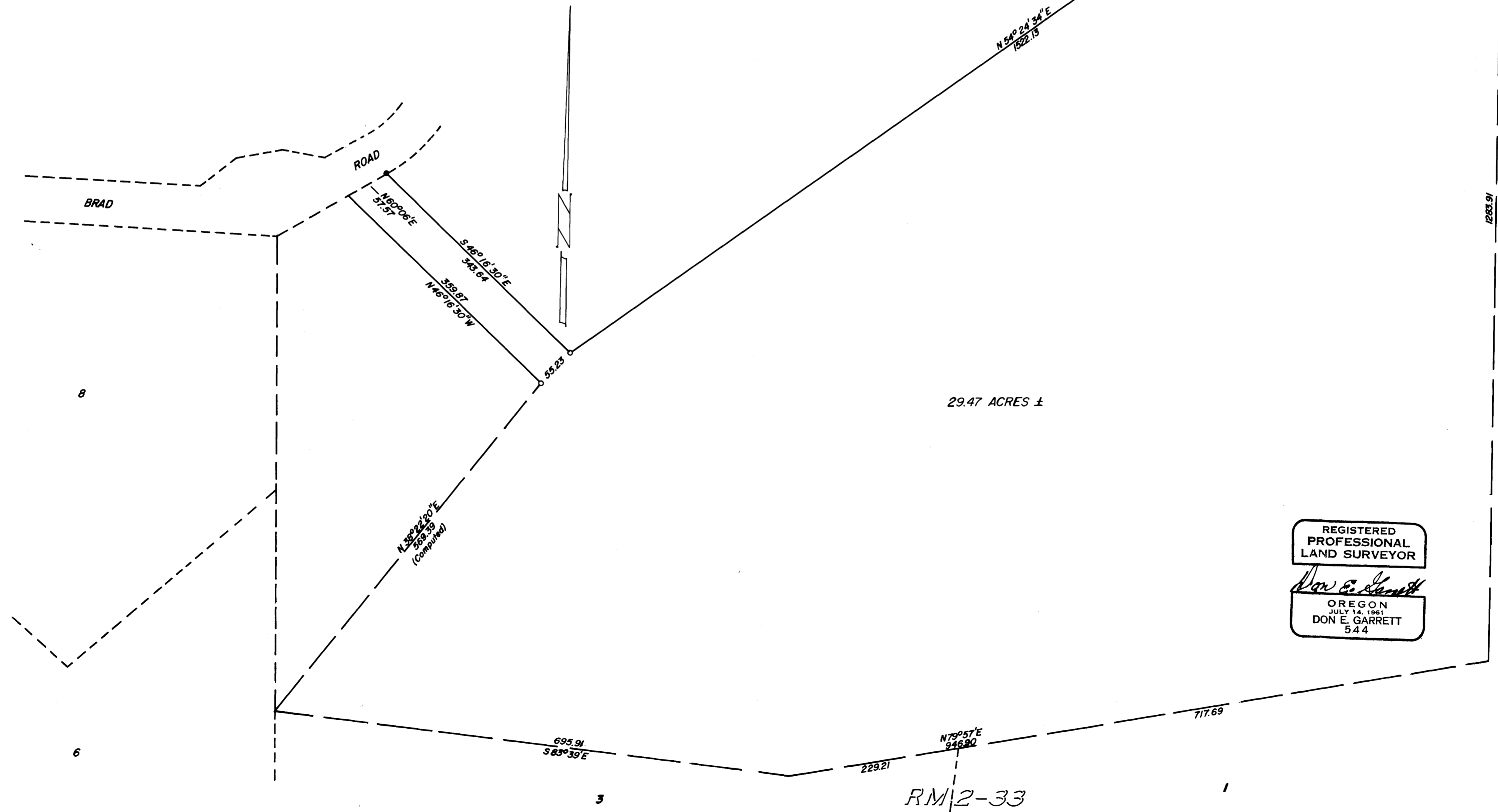
FILED *dy*
 RECEIVED *dy*

JAN 21 1974

COUNTY SURVEYOR
 DOUGLAS COUNTY, ORE

12' Cor.
 Found T Iron
 2405.88
 N 0° 14' 30" E
 3685.19
 (Base bearing RM 2-33)

MAP FILE M52-18



29.47 ACRES ±

REGISTERED
 PROFESSIONAL
 LAND SURVEYOR
Don E. Garrett
 OREGON
 JULY 14, 1961
 DON E. GARRETT
 544

MAP FILE M52-18

RM 2-33