

COUNTY SURVEYORS FILE DATA
DO NOT REMOVE FROM OFFICE

SURVEY IN BLOCK 8, CITY OF DRAIN, ORE.

IN SEC. 17, T 22 S, R 5 W. W. M.

ENGINEER - W.S. BARNES

SCALE 1" = 50'

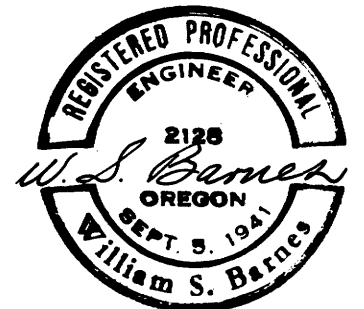
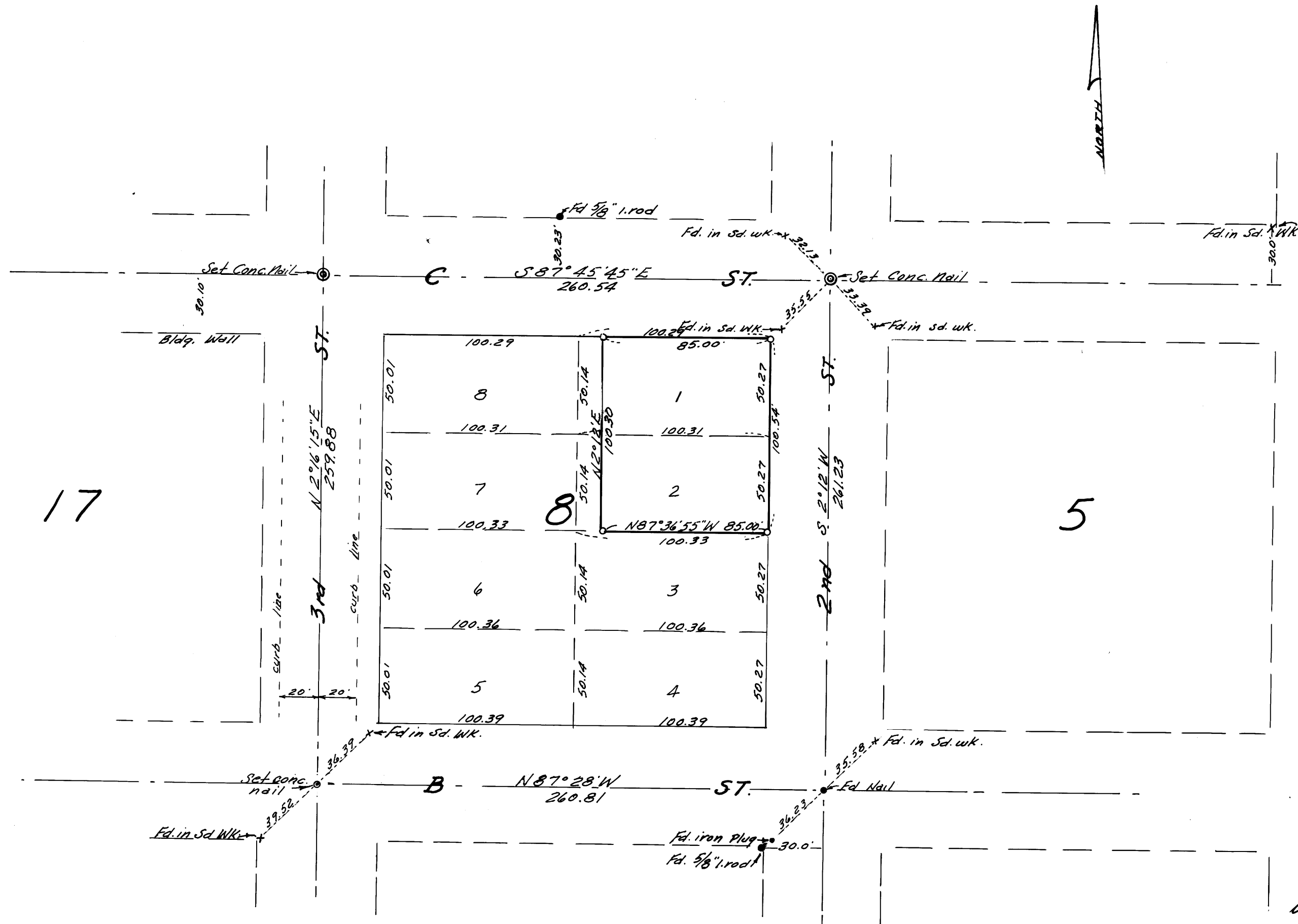
SEPT. 1973.

SURVEYED FOR - DOUGLAS NAT. BANK

FILED
RECEIVED 24

OCT 9 1973.

COUNTY SURVEYOR
DOUGLAS COUNTY, ORE.



o Denotes 5/8" iron rods set.

Note: Base of bearings taken from B St., see M 11-69.

Reference - C.S. file M 11-69.

MAP FILE M 51 - 9

MAP FILE M 51 - 9