

COUNTY SURVEYORS FILE DATA  
DO NOT REMOVE FROM OFFICE

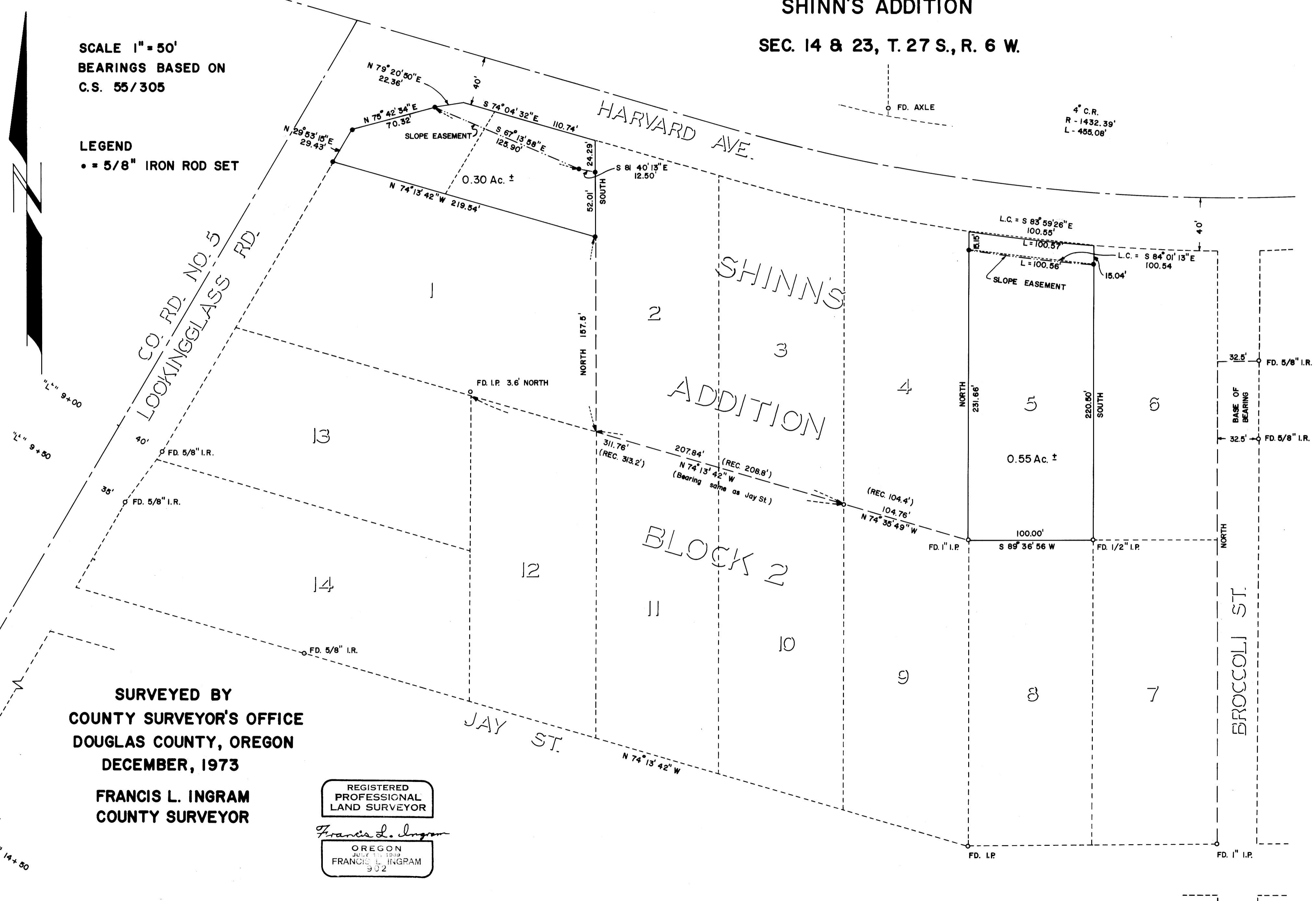
SURVEY FOR  
DOUGLAS COUNTY  
IN LOTS 1 & 5 OF BLOCK 2  
SHINN'S ADDITION  
SEC. 14 & 23, T. 27 S., R. 6 W.

FILED *d*  
RECEIVED *74*  
DEC 19 1973  
COUNTY SURVEYOR  
DOUGLAS COUNTY, ORE.

C.S. File No. 56/42  
MAP FILE M51 - 75

SCALE 1" = 50'  
BEARINGS BASED ON  
C.S. 55/305

LEGEND  
• = 5/8" IRON ROD SET



SURVEYED BY  
COUNTY SURVEYOR'S OFFICE  
DOUGLAS COUNTY, OREGON  
DECEMBER, 1973  
FRANCIS L. INGRAM  
COUNTY SURVEYOR

REGISTERED  
PROFESSIONAL  
LAND SURVEYOR

*Francis L. Ingram*

OREGON  
JULY 11 1959  
FRANCIS L. INGRAM  
902

MAP FILE M51 - 75  
C.S. File No. 56/42