

COUNTY SURVEYORS FILE DATA
NOT REMOVE FROM OFFICE

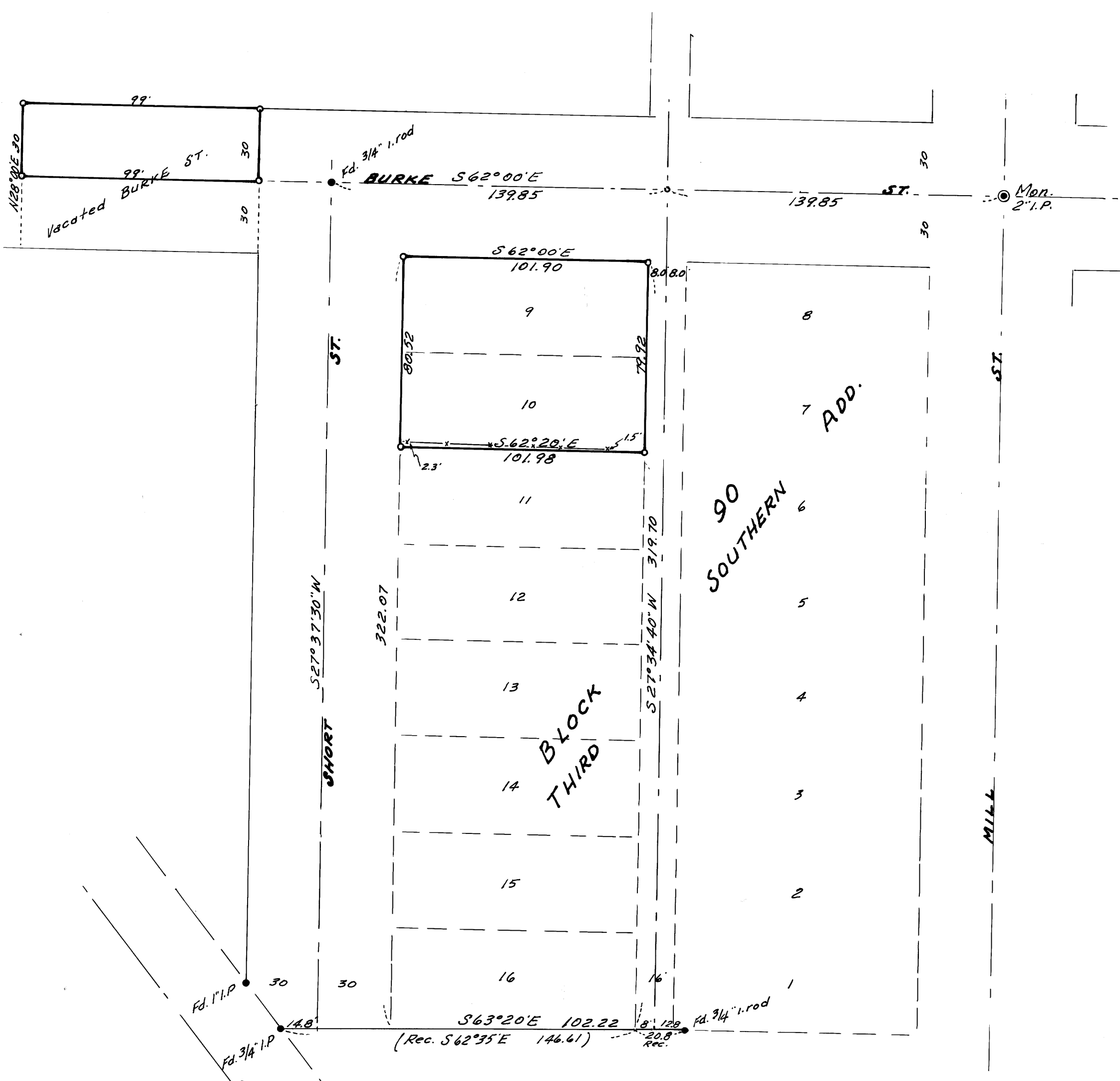
SURVEY IN BLOCK 90 and VACATED BURKE ST. THIRD SOUTHERN ADDITION TO ROSEBURG.

SURVEYED FOR - UMPQUA DAIRY
SURVEYED BY - W.S. BARNES ENG'R. SER.

DEC. 1973
SCALE 1" = 40'

FILED ✓
RECEIVED 7/4
DEC 10 1973
COUNTY SURVEYOR
DOUGLAS COUNTY, ORE.
mf

IN SEC. 24, T27S, R6W. W.M.



- Monuments Found.
- " Set.

Base of bearings taken from $\frac{1}{2}$ of Burke St.
Reference Maps - M-21-24

