

COUNTY SURVEYORS FILE DATA
DO NOT REMOVE FROM OFFICE

SURVEY OF PARCELS IN SECTION 36 ^{S.W.} S. 1/4, T. 27 S., R. 7 W., W.M.,
DOUGLAS COUNTY, OREGON TO LOCATE PROPERTY CORNER
FOR WILTON SMUCKER 10785 STATE ROUTE 164, LISBON, OHIO, 44432
BY HERBERT L. NORTHCRAFT

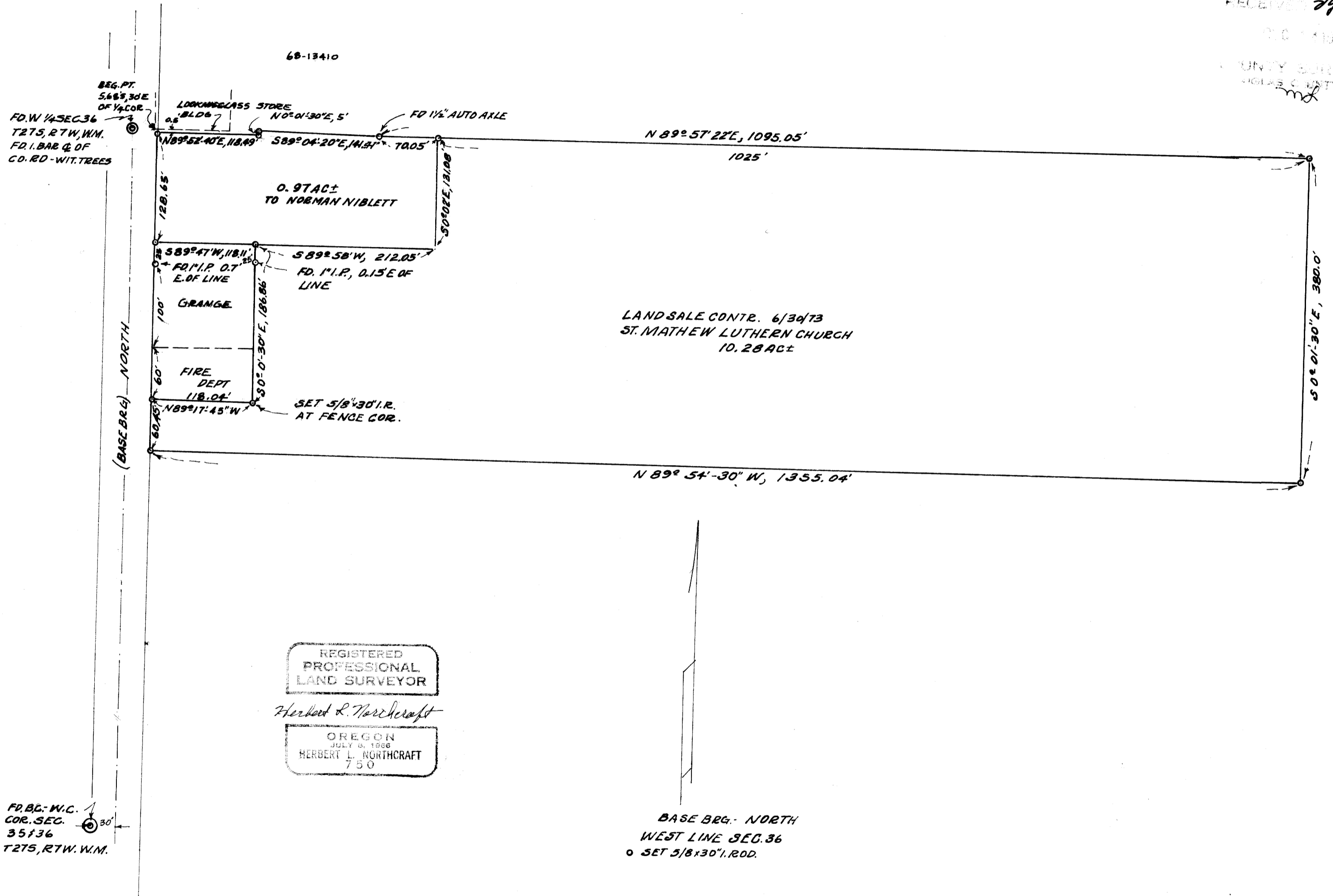
AUG-DEC. 1973

SCALE 1" = 100'

FILED ✓
RECEIVED 74

DEC 14 1973

COUNTY SURVEYOR
DOUGLAS COUNTY, OREG.



MAP FILE M51-66

MAP FILE M51-66