

FILED ✓
RECEIVED ✓

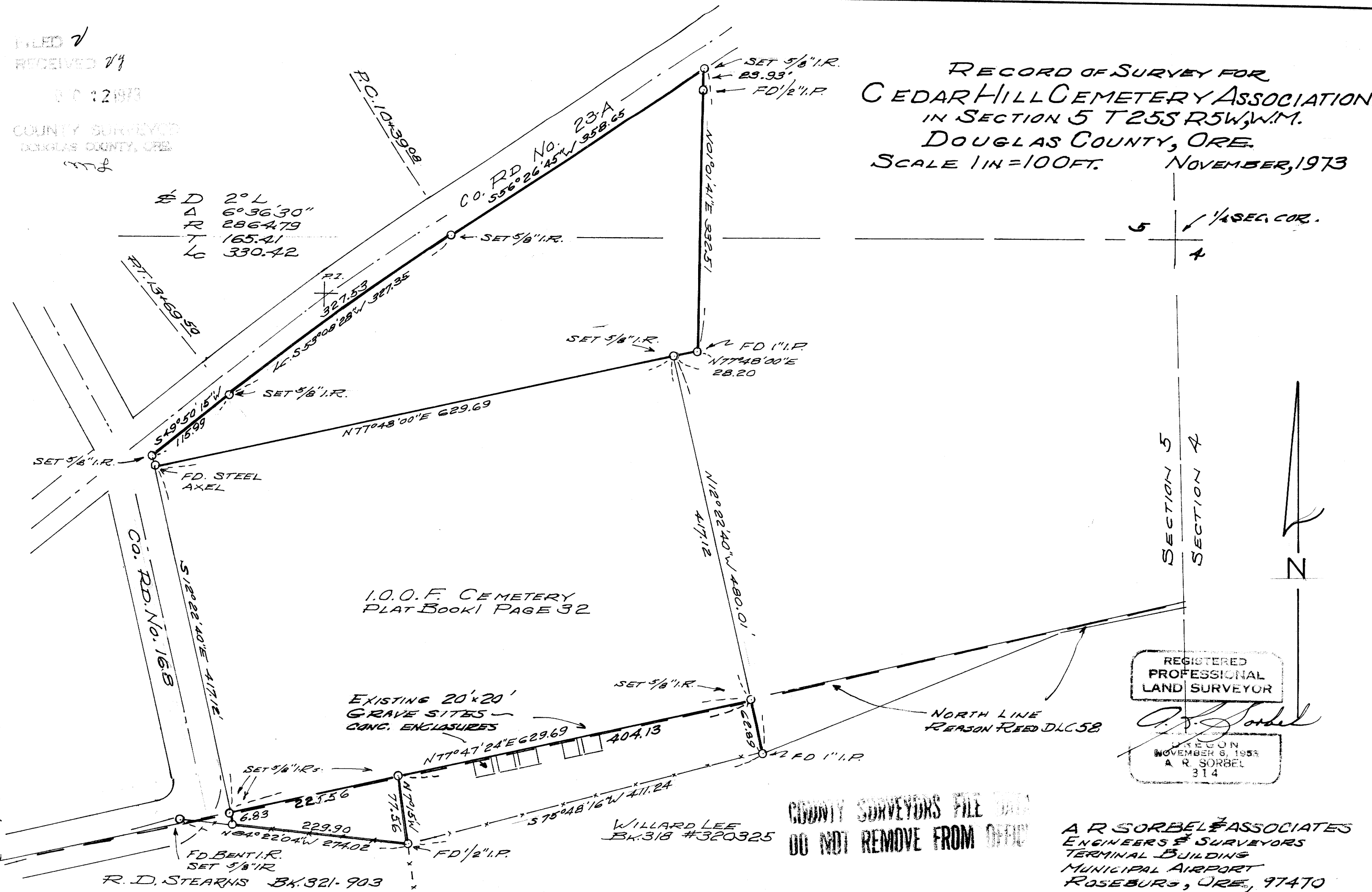
NOV 12 1973

COUNTY SURVEYOR
DOUGLAS COUNTY, ORE.

MSI

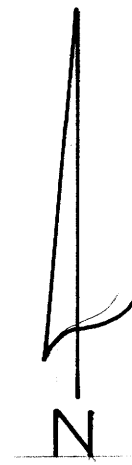
∠ D	2° L
∠ A	6° 36' 30"
R	2864.79
T	165.41
Lc	330.42

RECORD OF SURVEY FOR
CEDAR HILL CEMETERY ASSOCIATION
IN SECTION 5 T25S R5W, W.M.
DOUGLAS COUNTY, ORE.
SCALE 1 IN = 100 FT. NOVEMBER, 1973



5	1/4 SEC. COR.
4	

SECTION 5
SECTION 4



REGISTERED
PROFESSIONAL
LAND SURVEYOR

A. R. Sorbel

OREGON
NOVEMBER 6, 1953
A. R. SORBEL
314

COUNTY SURVEYORS FILE DATA
DO NOT REMOVE FROM OFFICE

A R SORBEL & ASSOCIATES
ENGINEERS & SURVEYORS
TERMINAL BUILDING
MUNICIPAL AIRPORT
ROSEBURG, ORE., 97470

MAP FILE MSI - 67

MSI - 64