

COUNTY SURVEYORS & CITY  
DO NOT REMOVE FROM OFFICE

# PROPERTY SURVEY TO SEPERATE JOINT TENANCY

## LOT 8, ECKLUND ADDITION TO CITY OF CANYONVILLE

### IN SEC. 27, T.30S., R.5W.,W.M.

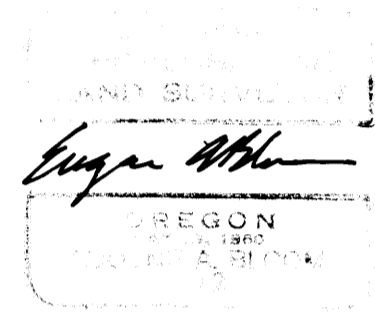
FOR — ANNE ROYLE  
BY — BAUGHMAN SURVEYING SERVICE

OCTOBER 1973

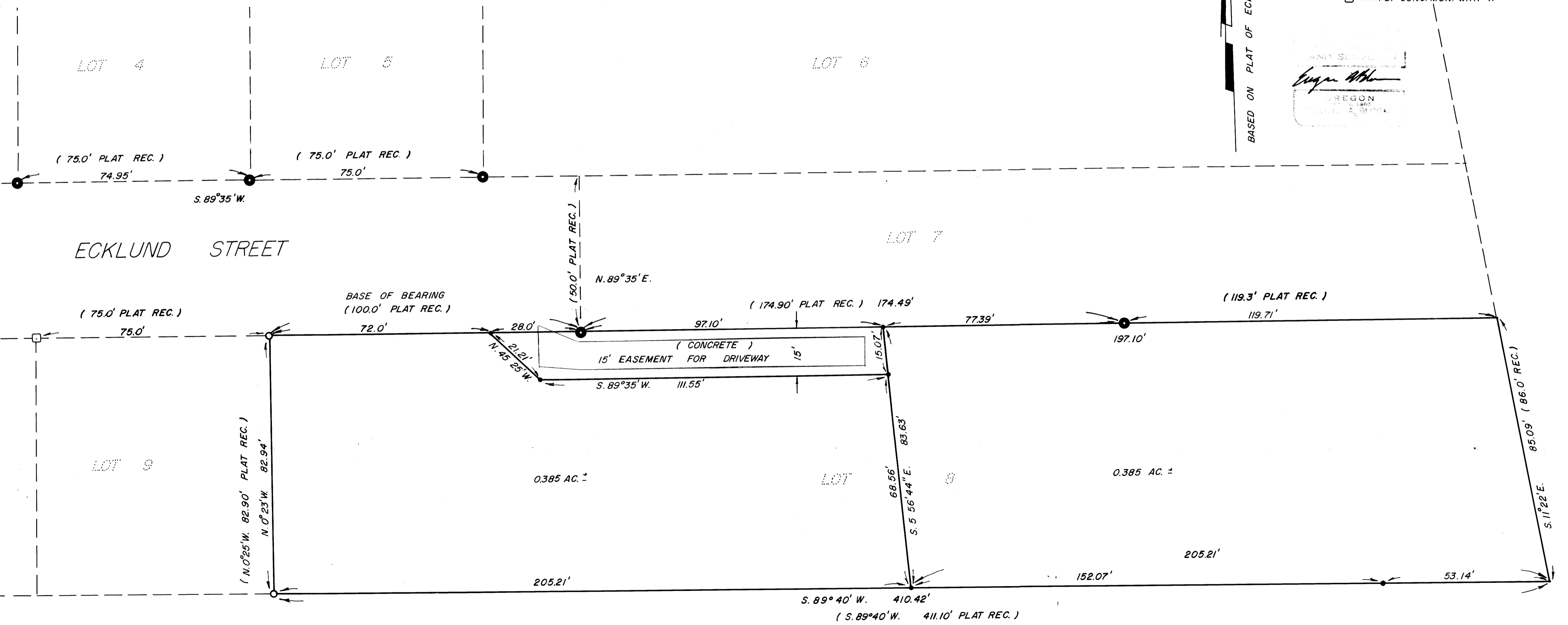
SCALE 1" = 20'

#### LEGEND

- — SET 5/8" I.R.
- — FD. 1" I.P.
- — FD. 3/4" I.P.
- — FD. CONC. MON. WITH "X"



BASED ON PLAT OF ECKLUND ADDITION TO CITY OF CANYONVILLE



M 51-6

M 51-6