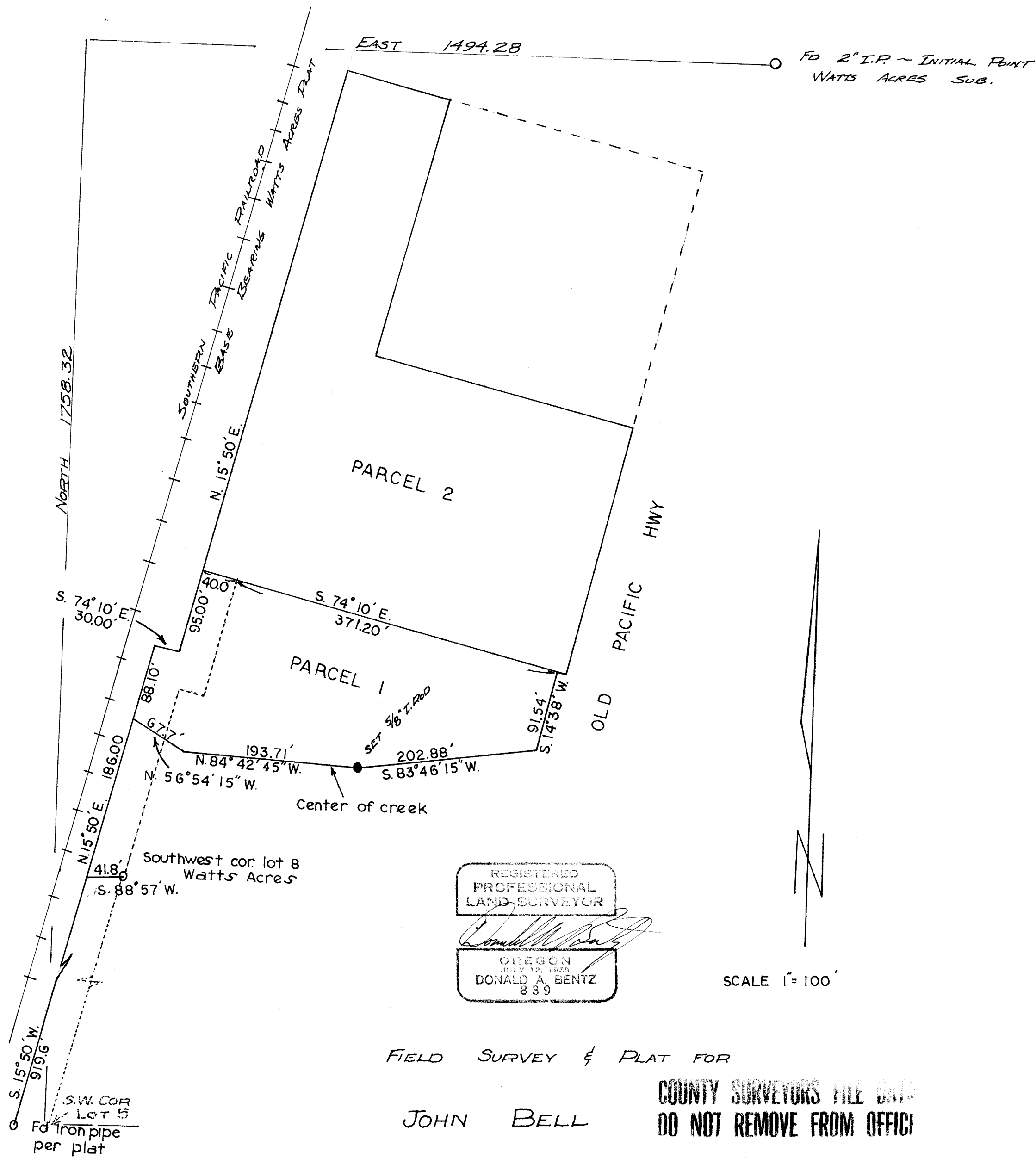


FILED  
RECEIVED

DEC 10 1973

COUNTY SURVEYOR  
DOUGLAS COUNTY, ORE.



FIELD SURVEY & PLAT FOR

JOHN BELL

COUNTY SURVEYORS FILE DATA  
DO NOT REMOVE FROM OFFICE

PARCEL 1 - A PORTION OF LOT 8, WATTS ACRES  
PARCEL 2 - A PORTION OF WATTS ACRES, PLAT 2  
IN SECTION 2, T28S, R6W, W.M. DOUGLAS COUNTY  
11, OREGON

MAY 1973

DONALD A. BENTZ MAP FILE M51-58