

FILED ✓
 RECEIVED 7/1
 DEG 12 1973
 COUNTY SURVEYOR
 DOUGLAS COUNTY, OREGON
 M&E

COUNTY SURVEYORS FILE DATA
 DO NOT REMOVE FROM OFFICE

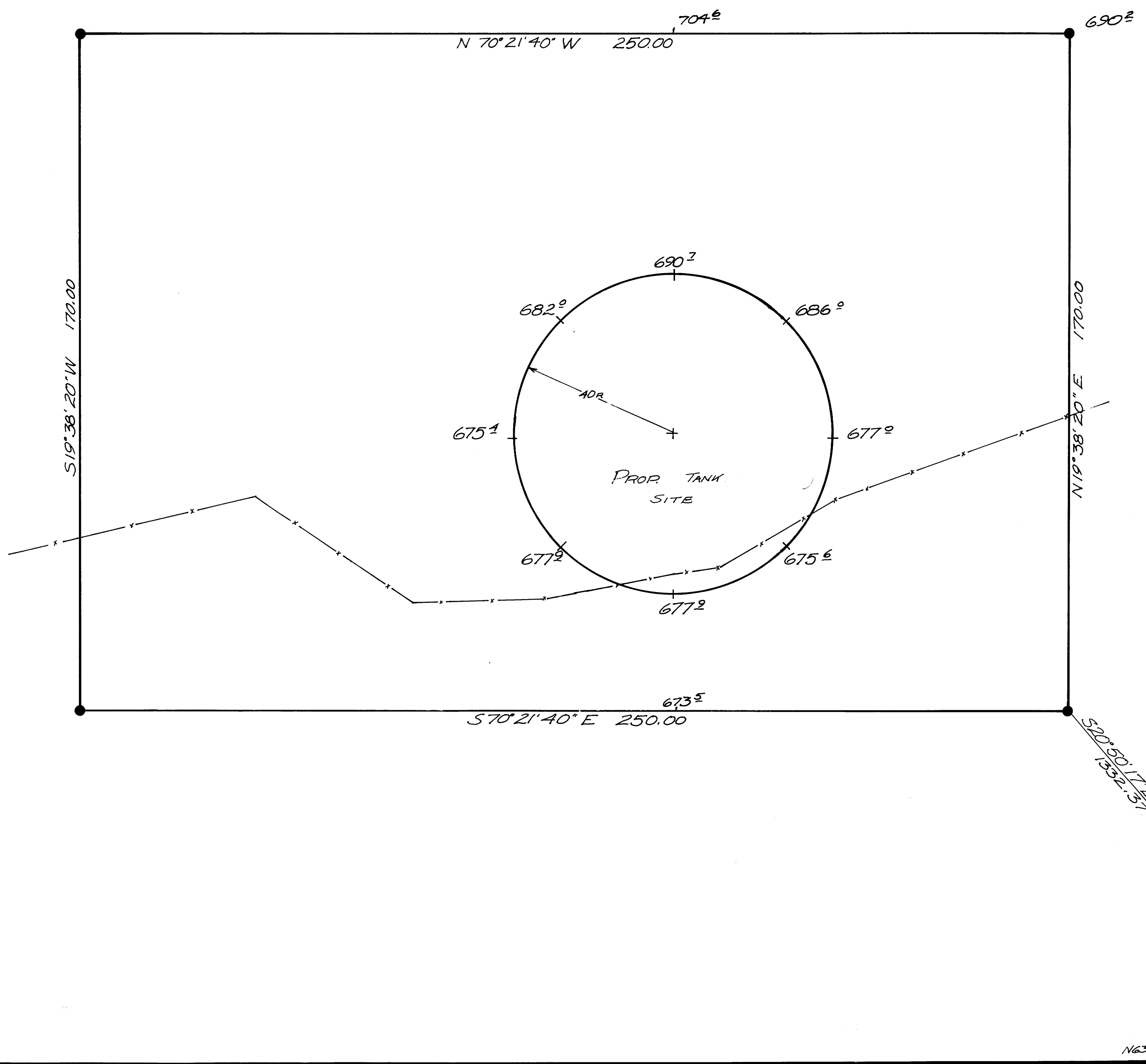
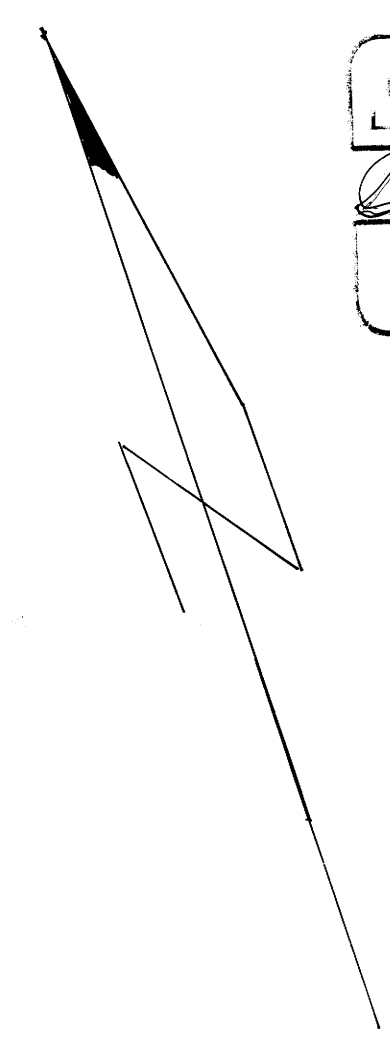
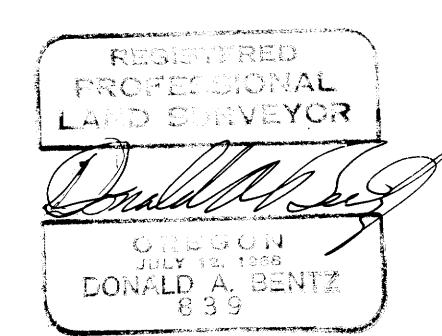
FIELD SURVEY FOR OREGON WATER CORP.

SURVEY IN SECTION 11, T27S
 R6W W.M. DOUGLAS Co., OREGON

SCALE 1"=20'

BY DONALD A. BENTZ

● SET 5/8" I. ROD



fd BRASS CAP N.W. COR.
 D.L.C. #65

fd I.P.
 N63° 13' W 8.85

JAN 1973

MSI - 56

MSI - 56