

COUNTY SURVEYORS FILE DATA  
DO NOT REMOVE FROM OFFICE

# SURVEY TO SET PROPERTY CORNER IN THE SOUTH 1/2 SEC. 13, T.26S., R.4W., W.M. FOR — A. L. MILLS BY — BAUGHMAN SURVEYING SERVICE

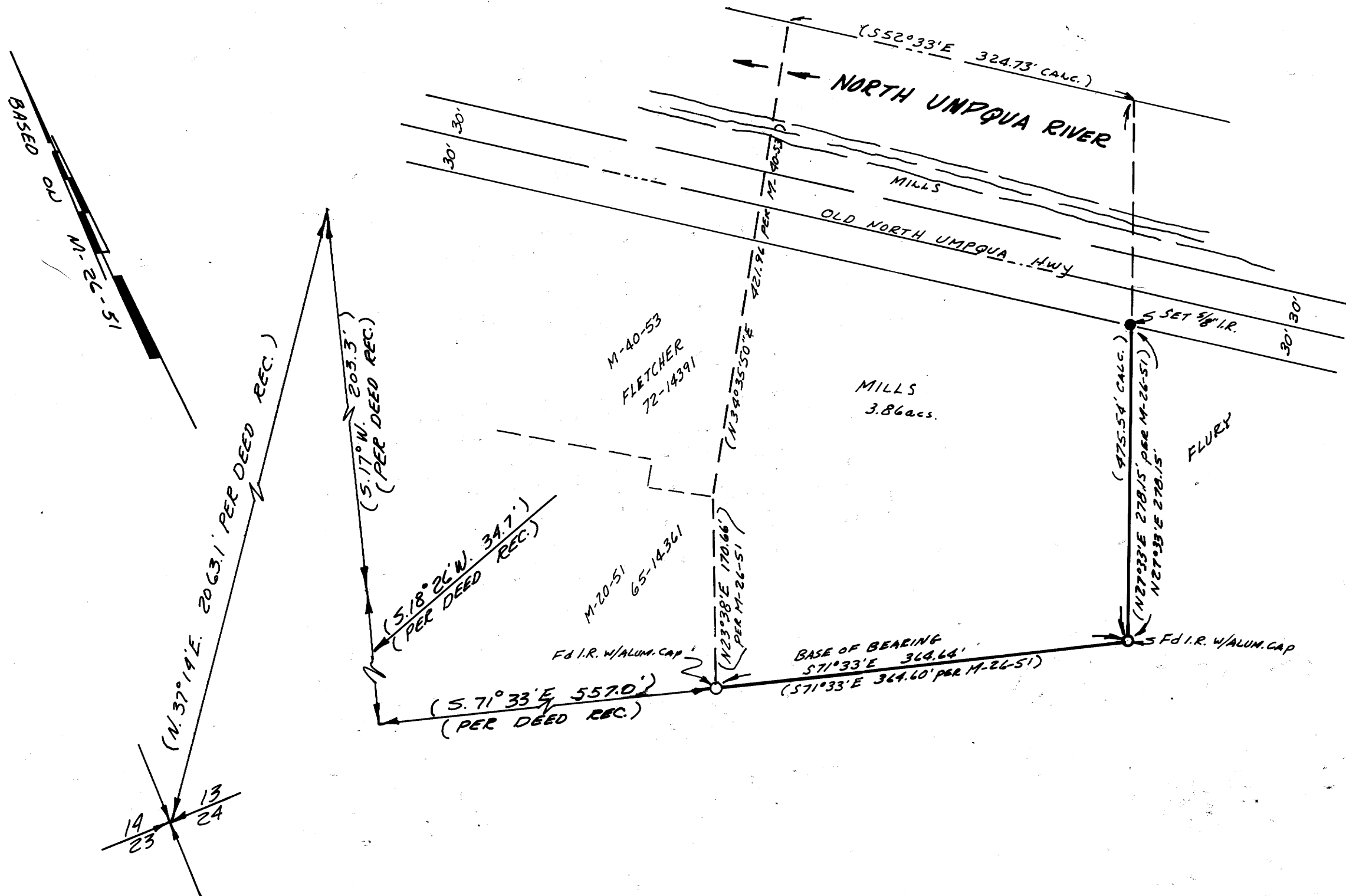
NOVEMBER 1973

SCALE 1"=100'

FILED ✓  
RECEIVED 2/1  
DEC 10 1973

COUNTY SURVEYOR  
DOUGLAS COUNTY, ORE  
*fl*

MAP FILE MS1 - 53



MAP FILE MS1 - 53

REGISTERED  
PROFESSIONAL  
LAND SURVEYOR

*Eugene A. Bloom*

OREGON  
MAY 13, 1960  
EUGENE A. BLOOM  
492