

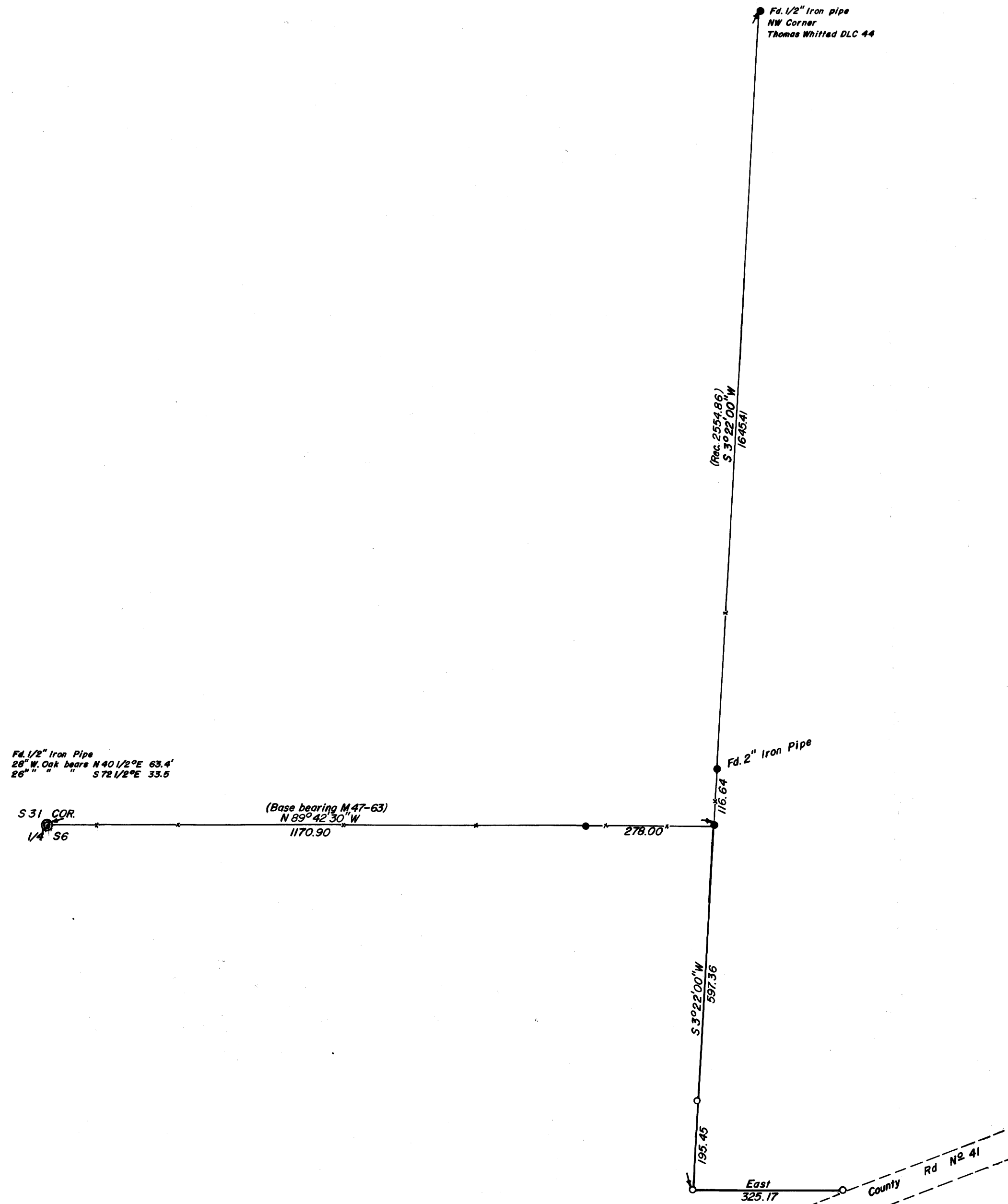
COUNTY SURVEYORS FILE DATA  
DO NOT REMOVE FROM OFFICE

**SURVEY IN SECTION 6, TOWNSHIP 30 SOUTH, RANGE 5 WEST, WILLAMETTE MERIDIAN**  
*Surveyed for Robert Jenkins by Don E. Garrett*  
**November, 1973**

Scale 1" = 200'

FILED ✓  
RECEIVED m&g  
NOV 27 1973  
COUNTY SURVEYOR  
DOUGLAS COUNTY, ORE.  
m&g

- Set 5/8" Iron Rod
- Fd. 5/8" Iron Rod



REGISTERED  
PROFESSIONAL  
LAND SURVEYOR

*Don E. Garrett*

OREGON  
JULY 14, 1981  
DON E. GARRETT  
544

MAP FILE M 51-46

MAP FILE M 51-46