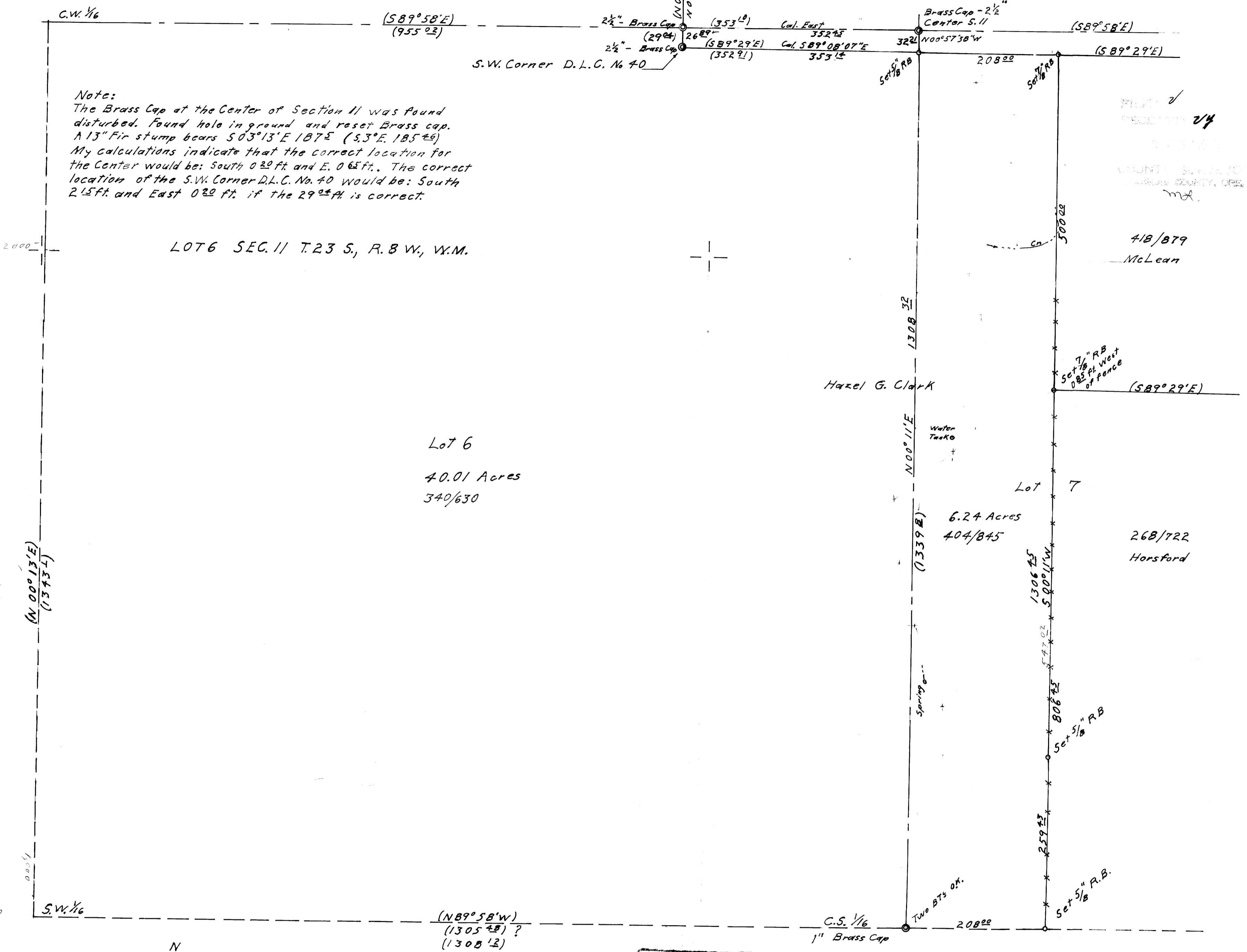


COUNTY SURVEYORS FILE DATA
DO NOT REMOVE FROM OFFICE

D.L.C. No 40



Note:
The Brass Cap at the Center of Section 11 was found disturbed. Found hole in ground and reset Brass cap. A 13" Fir stump bears S03°13'E 187± (S.3°E. 185±). My calculations indicate that the correct location for the Center would be: South 0.20 ft. and E. 0.65 ft. The correct location of the S.W. Corner D.L.C. No. 40 would be: South 2.15 ft. and East 0.20 ft. if the 29°± is correct.

LOT 6 SEC. 11 T. 23 S., R. 8 W., W.M.

Lot 6
40.01 Acres
340/630

418/879
McLean

268/722
Horsford

Scale: 1" = 100 ft.
October 1973
Corners Set 11/17/73

REGISTERED PROFESSIONAL LAND SURVEYOR
John B. Gearhart
OREGON
MAY 2, 1959
JOHN B. GEARHART
470

Surveyed For Hazel G. Clark
Basis of survey: B.L.M. Subdivision of Sec. 11 in 1967-1968. Basis of bearings: East line of Lot 6, N.00°11'E. Corners found are shown thus: ● Corners Set, shown thus: ○ The B.T.s at the S.W. Corner D.L.C. No. 40 were: A 14" Fir with tag N.56½°W. 31± ft. (31±). No evidence that pipe was moved. A white Fir, 18" diam. N 41°00'E 123± ft. (125±). From Brass cap north of S.W. Corner D.L.C. No. 40: A 14" Fir with tag bears S 79°W 29± ft. (S 79°W 29±). A 18" Fir with tag bears N 16°W 56± (56±). This corner and the C.S. 1/16 were used for control.

MAP FILE M51-45