

**SURVEY FOR PROPERTY CORNERS
 IN BLK. I, NORTH PARK ADDITION
 IN THE S.W. 1/4 SEC. 18, T.27S., R.5W., W.M.
 FOR - KRUSE & FITCH ARCHITECTS
 BY - BAUGHMAN SURVEYING SERVICE**

SEPTEMBER 1973

SCALE 1" = 50'

FILED
RECORDED

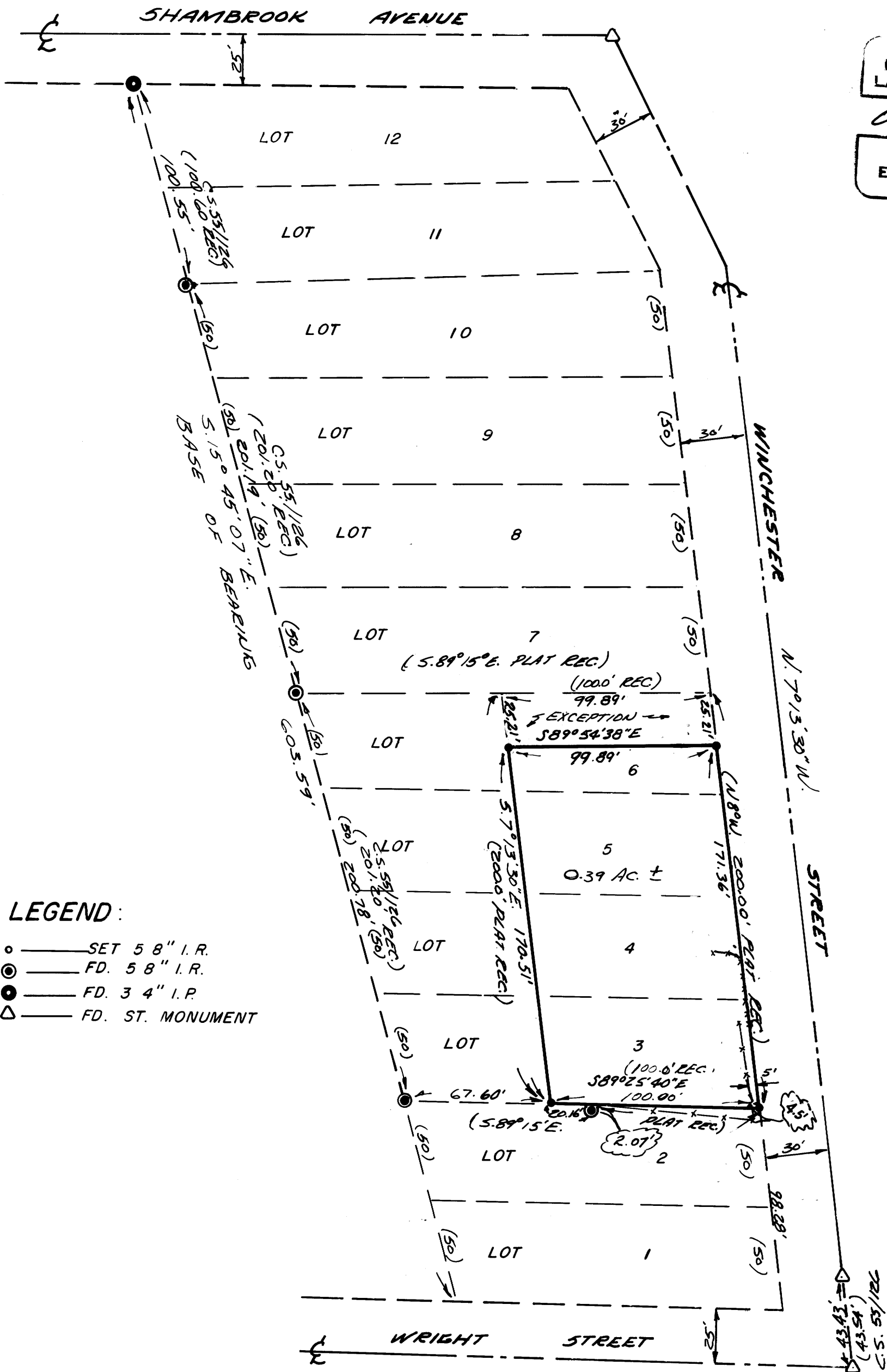
07 1973

COUNTY SURVEYOR
CLATSOP COUNTY, OREGON

REGISTERED
PROFESSIONAL
LAND SURVEYOR

Eugene Bloom

OREGON
MAY 15, 1960
EUGENE A. BLOOM
492



LEGEND:

- — SET 5/8" I.R.
- ⊙ — FD. 5/8" I.R.
- — FD. 3/4" I.R.
- △ — FD. ST. MONUMENT



COUNTY SURVEYORS FILE DATA
DO NOT REMOVE FROM OFFICE