

REVISION SURVEYORS FILE DATA  
DO NOT REMOVE FROM OFFICE

FILED   
RECEIVED

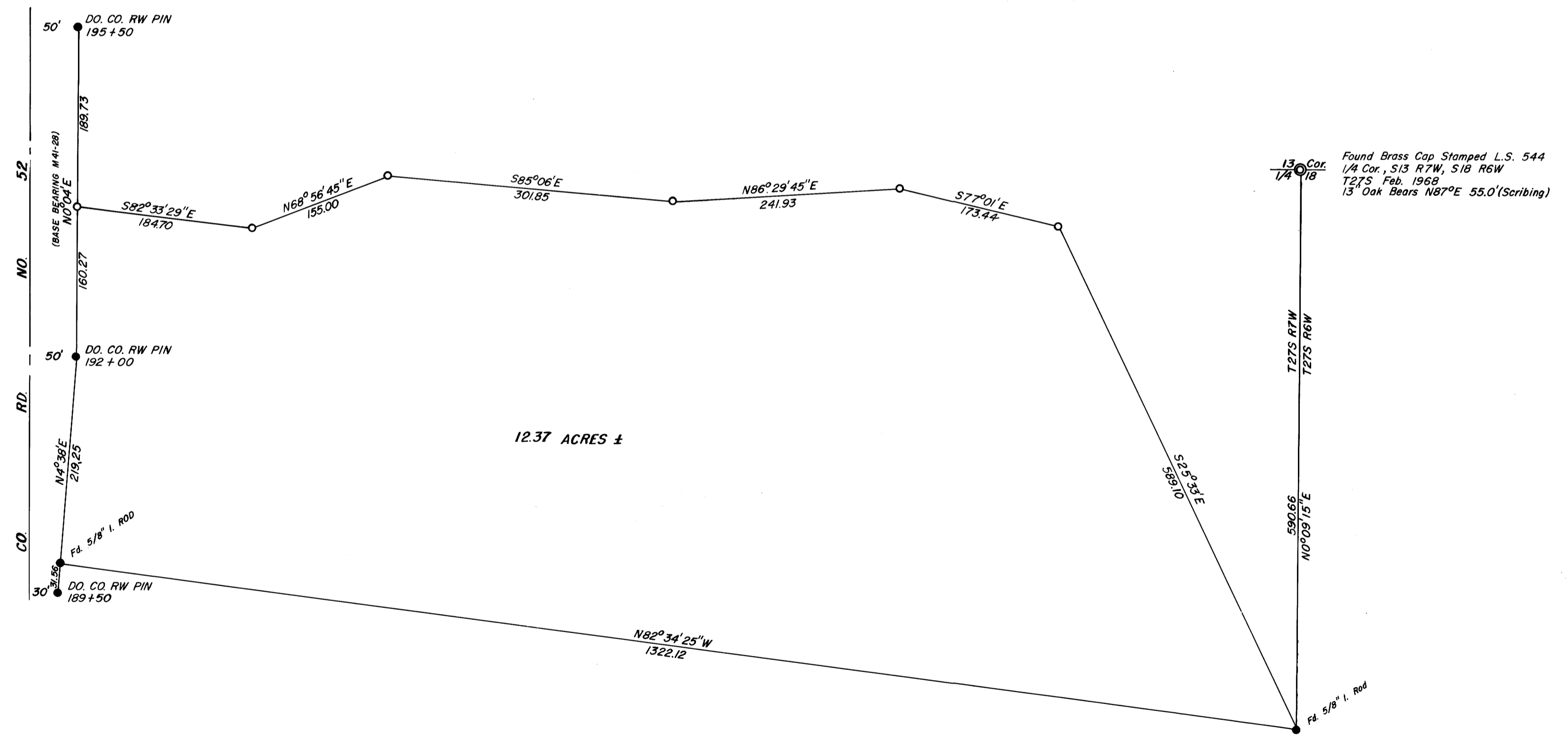
NOV 13 1973

COUNTY SURVEYOR  
CLATSOP COUNTY, OREGON  
m.d.

**SURVEY IN SECTION 13, TOWNSHIP 27 SOUTH, RANGE 7 WEST, WILLAMETTE MERIDIAN**  
Surveyed for Charles Church by Don E. Garrett  
November 1973

Scale 1" = 100'

o - Set 5/8" I. Rod  
Note: This survey replaces M 41-28 which was done in March 1971.



REGISTERED  
PROFESSIONAL  
LAND SURVEYOR

*Don E. Garrett*

OREGON  
JULY 14, 1961  
DON E. GARRETT  
544

MAP FILE M 41-28 - 37