

COUNTY SURVEYORS FILE DATA  
DO NOT REMOVE FROM OFFICE

SURVEY IN SECTIONS 14 & 23, TOWNSHIP 26 SOUTH, RANGE 4 WEST, W.M.  
Surveyed for John Connine by Don E. Garrett  
November, 1973

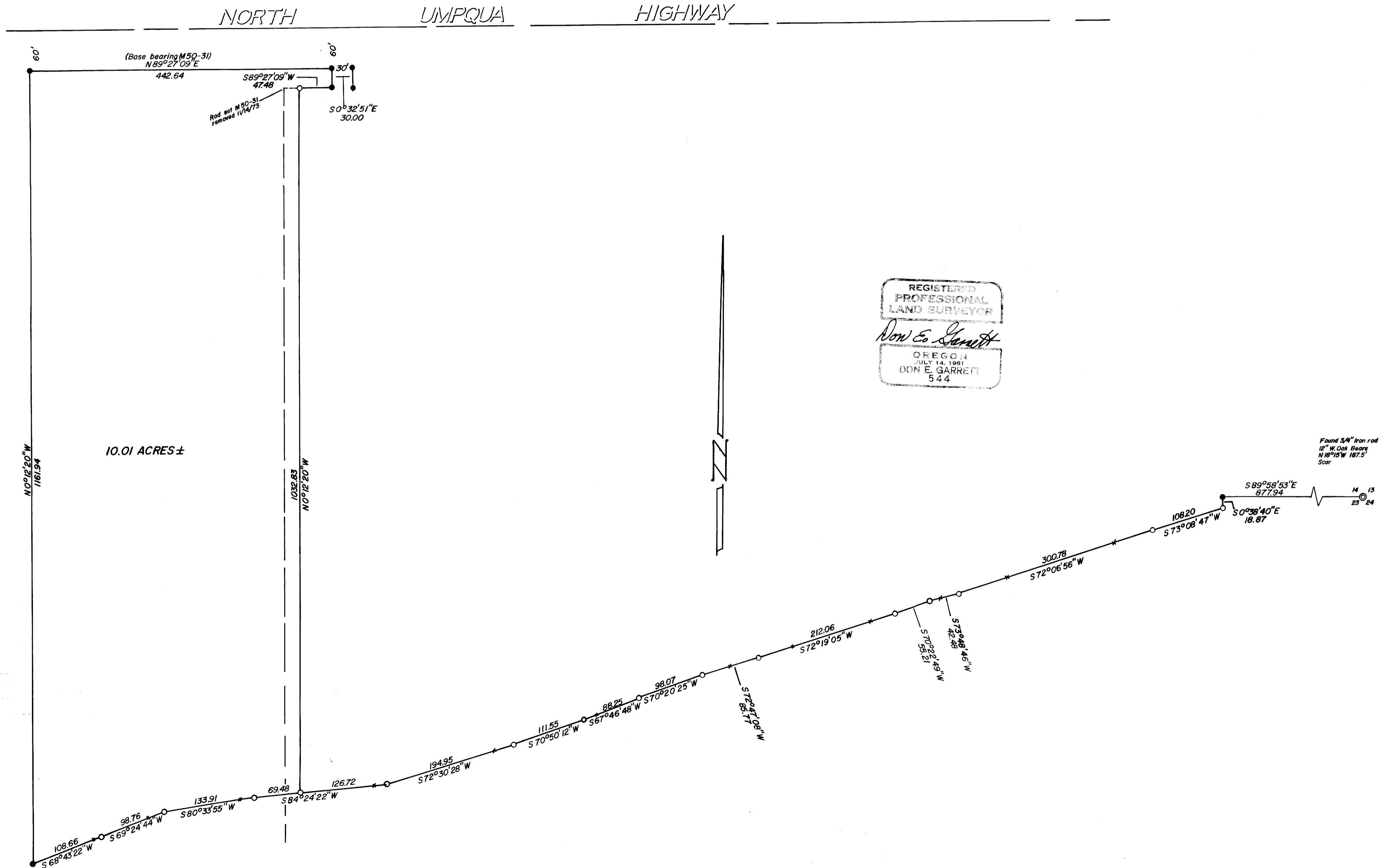
Scale 1" = 100'

- Set 5/8" I. Rod
- Found 5/8" I. Rod

FILED ✓  
RECEIVED ml

Nov 13 1973

COUNTY SURVEYOR  
CLATSOP COUNTY, ORE.  
ml



MAP FILE M51-36

M51-36