

FILED ✓
RECEIVED 7/4

COUNTY SURVEYORS FILE DATA
DO NOT REMOVE FROM OFFICE

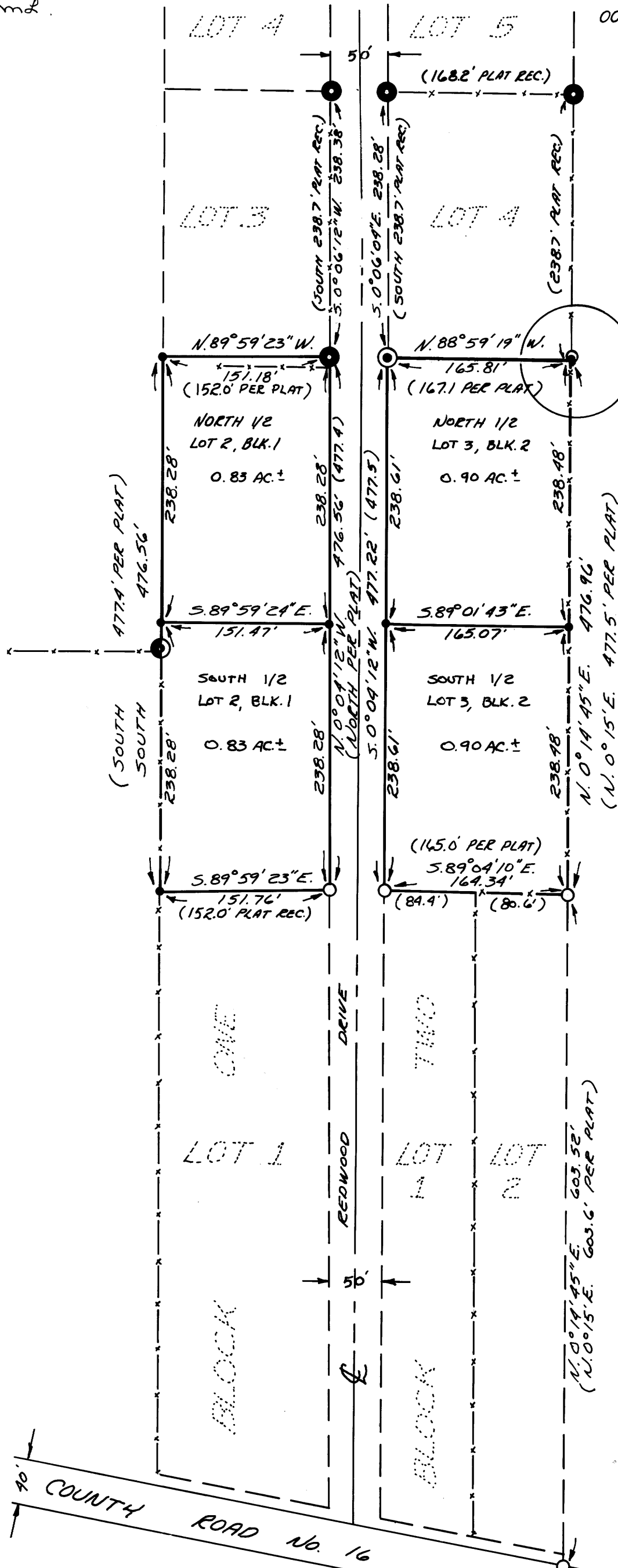
SURVEY FOR PROPERTY CORNERS
LOT 2, BLK. 1 & LOT 3, BLK. 2 YOCUM ACRES
IN SEC. 13 & 24, T.28S., R.6W., W.M.
FOR W. FOWSER & H. WESTIN
BY BAUGHMAN SURVEYING SERVICE

COUNTY SURVEYOR
DOUGLAS COUNTY, ORE.
m.d.

OCTOBER 1973

SCALE 1" = 100'

BASED ON PLAT OF YOCUM ACRES



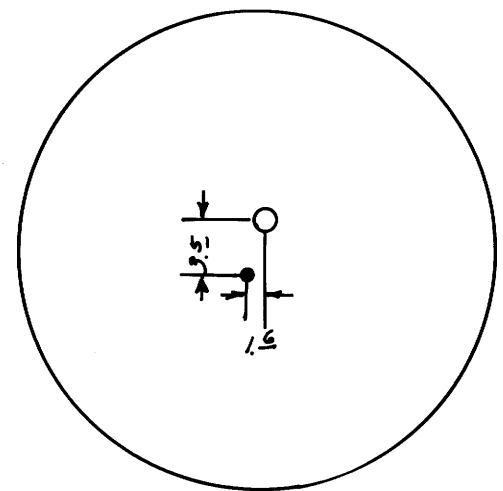
REGISTERED
PROFESSIONAL
LAND SURVEYOR

Eugene A. Bloom

OREGON
MAY 13, 1960
EUGENE A. BLOOM
492

SEE DETAIL "A"

DETAIL "A"



LEGEND

- — SET 5/8" I.R.
- — FD. 3/4" I.P.
- — FD. 1/2" I.R.
- — FD. 1" I.P.
- ⊙ — FD. 1 1/2" I.P.
- — FENCE