

SURVEY FOR PROPERTY CORNERS IN THE S.W. 1/4 SEC. 17, T.26S., R.3W., W.M. FOR — GLENN LONG & LONNIE BROOKS BY — BAUGHMAN SURVEYING SERVICE

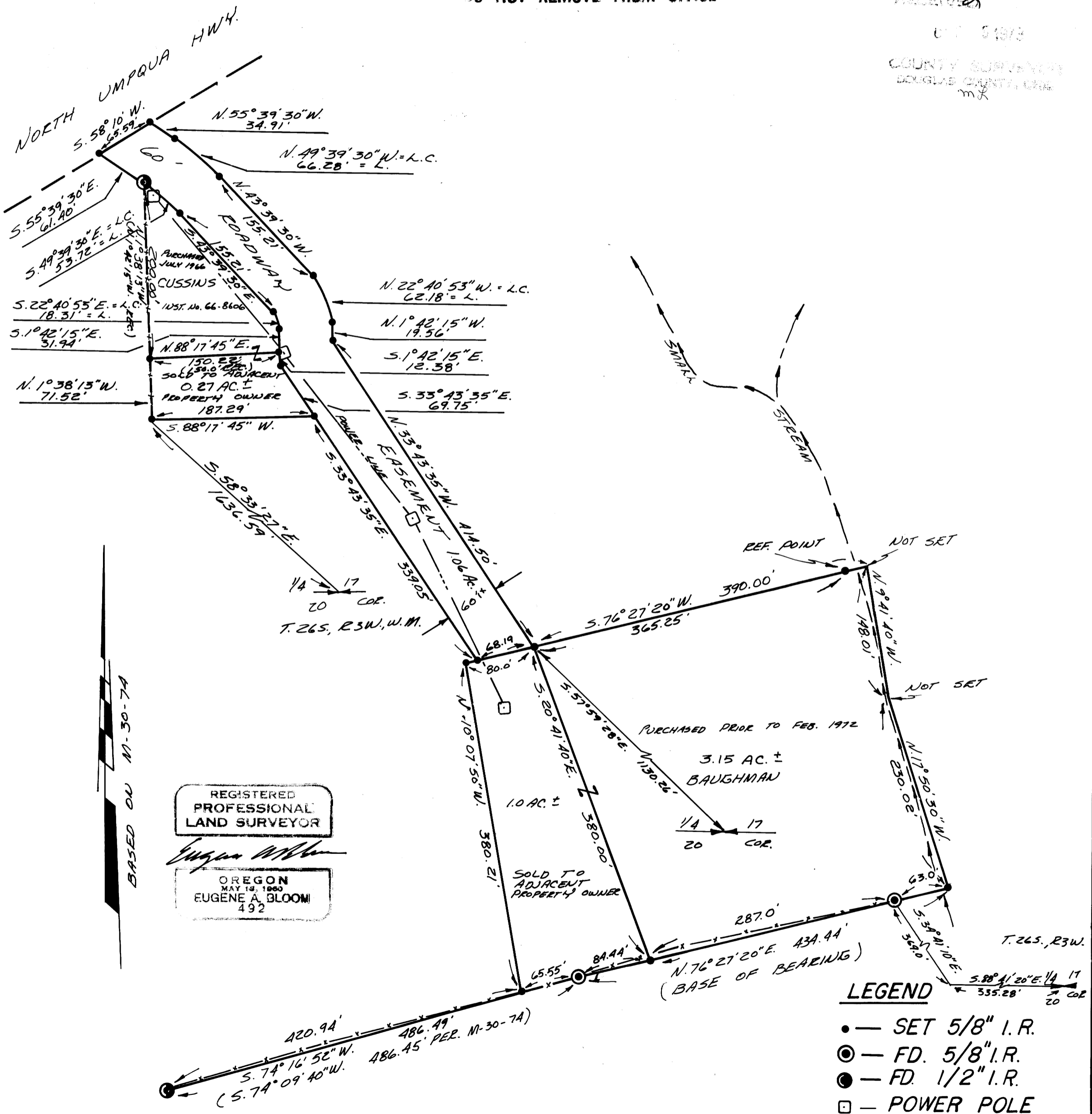
SEPTEMBER 1973

DO NOT REMOVE FROM OFFICE
SCALE 1" = 100'

FILED
RECEIVED

SEP 19 1973

COUNTY SURVEYOR
DOUGLAS COUNTY, ORE
m/k



BASED ON N-30-74

REGISTERED
PROFESSIONAL
LAND SURVEYOR

Eugene A. Bloom

OREGON
MAY 19, 1960
EUGENE A. BLOOM
492

LEGEND

- — SET 5/8" I.R.
- ⊙ — FD. 5/8" I.R.
- — FD. 1/2" I.R.
- — POWER POLE