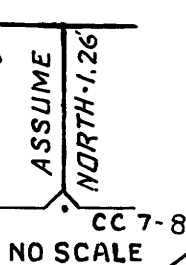


S 89° 26' 48" E  
52.88'

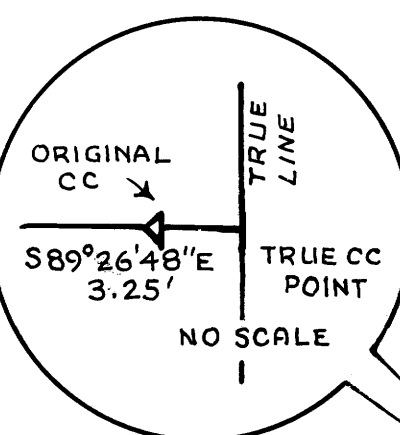
POINT ON LINE



SECTION COR. FOUND,  
1" IRON PIPE  
3 ORIG. BTS  
2 NEW BTS  
H.J. NEWHOUSE, 1957

CC FOUND,  
NAIL IN CENTER 12"x12"  
CROSS IN BEDROCK  
H.J. NEWHOUSE, 1957

1/4 CORNER REESTABLISHED  
SET OSBF P/C 34" IG  
5" ALDER S 20° W 11.3'  
6" ALDER S 87° E 2.9'; YMLP (RS359)  
WPCP N 60° E 1.2'



SECTION CORNER FOUND,  
OSBF P/C, 1 ORIG. BT  
2 STUMP BTS

CC FOUND,  
OSBF P/C,  
3 ORIG. BTS, 1 NEW BT  
1 BO

N 1/16 CORNER ESTABLISHED  
SET 1 1/2" x 10" OSBF P/C, 10" IN  
CONCRETE IN BEDROCK DRAW  
21" FIR N 58° W 19.0' (RS359) YMLP  
8" x 23" BEDROCK S 19° W 78.7'; 6" (X BO)  
WPCP SOUTH 34.9'

1/4 CORNER FOUND,  
1 ORIG. BT, 24" x 16" x 16" SANDSTONE  
2 NEW BTS

1/4 CORNER ESTABLISHED  
SET OSBF P/C 34" IG IN MR  
6" ALDER S 77° W 57.7'; YMLP (RS359)  
1' x 2' ROCK POINT S 04 1/2° E 27.1'; 4" (X BO)  
WPCP N 65° W 3.2'

S 1/16 CORNER ESTABLISHED  
SET OSBF P/C 35" IG  
14" FIR S 66 1/2° W 18.3'; YMLP (RS 359)  
20" FIR N 02 1/2° W 52.4'  
WPCP SOUTH 1.6'

SECTION CORNER FOUND,  
OSBF P/C,  
3 ORIG. BTS  
1 NEW BT

CC FOUND,  
OSBF P/C, 2 BTS

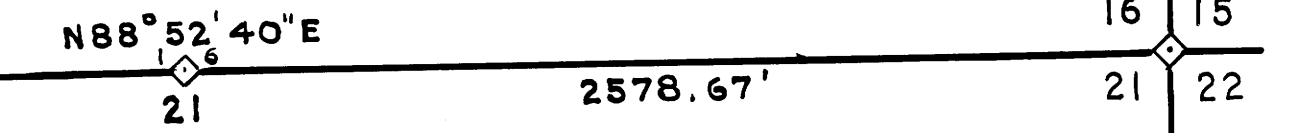
- LEGEND**
- OSBF P/C = OREGON STATE BOARD OF FORESTRY 1/2"x36" GALV-ANIZED IRON PIPE WITH 3" BRONZE CAP
  - WPCP = 4"x4"x72" WHITE PAINTED CEDAR POST
  - YMLP = YELLOW METAL LOCATION POSTER
  - IG = IN GROUND
  - BTS = BEARING TREES
  - [ ] = RECORD [ORIGINAL] DISTANCE IN [CHAINS]
  - MR = MOUND OF ROCKS
  - BO = BEARING OBJECT [X ON ROCK]
  - CC = CLOSING CORNER

FOR DETAILED REPORT ON FOUND CORNERS SEE COUNTY RECORDS. NEW CORNERS AND ACCESSORIES MARKED ACCORDING TO "MANUAL OF INSTRUCTIONS FOR THE SURVEY OF THE PUBLIC LANDS OF THE U.S." OTHER MARKINGS AS INDICATED ( ). DISTANCES TO FACES OF NEW BTS  
ESTABLISHED = NEW CORNERS SET  
REESTABLISHED = LOST GLO, CADASTRAL OR OTHER CORNER RESET BY PROPORTIONATE MEASUREMENT OR AS NOTED.

**SOLAR OBSERVATION**  
AS TAKEN BY A. DRIVER FOR SCHOLFIELD CREEK ROAD

MAGNETIC VARIATION	20° 21' EAST
DATE	MARCH 10, 1960
STANDARD TIME	10: 08: 12 A. M.
LOCAL TIME	9: 51: 51 A. M.
SUN'S DECLINATION	S 3° 52' 58"
REF. & PAR. CORRECTION	-1' 23"
LATITUDE	N 43° 39' 42"
SUN'S ALTITUDE	32° 48' 07"
PLACE OF OBSERVATION	S 80° 30' 34" W 1383.4' FROM 1/4 CORNER 13 & 14, T22S, R12 W, WM

1/4 CORNER REESTABLISHED SET OSBF P/C 34" IG 34" FIR S 28° E 21.8'; YMLP (RS359) 23" FIR N 65° E 18.7' WPCP S 10° E 1.8'	SECTION CORNER FOUND, OSBF P/C, 2 ORIG. BTS 3 NEW BTS
--	---



SECTION CORNER FOUND,  
OSBF P/C, 4 BTS

W 1/16 CORNER FOUND,  
OSBF P/C, 3 BTS

1/4 CORNER FOUND,  
OSBF P/C, 3 BTS

E 1/16 CORNER FOUND,  
OSBF P/C, 2 BTS

(SEE 1967 OSBF SURVEY OF THIS LINE)

REGISTERED  
PROFESSIONAL  
LAND SURVEYOR

*Arnold G. Gibson*

OREGON  
NOV 4, 1955  
ARNOLD G. GIBSON  
359

COUNTY SURVEYORS FILE DATA  
DO NOT REMOVE FROM OFFICE

SURVEY FOR  
STATE OF OREGON - DEPARTMENT OF FORESTRY  
**SECTION 17, T22S, R11W, WM**

DOUGLAS COUNTY, OREGON  
TRANSIT, CHAIN & E.D.M. SURVEY BY: C.W. COOK, R.T. SHEPARD,  
W. E. METCALF, S. A. NICHOLSON AND S.M. CONOVER

DRAWN BY: A. J. KLOSTERMAN  
AUGUST 1, 1973  
SCALE: 1" = 500'

