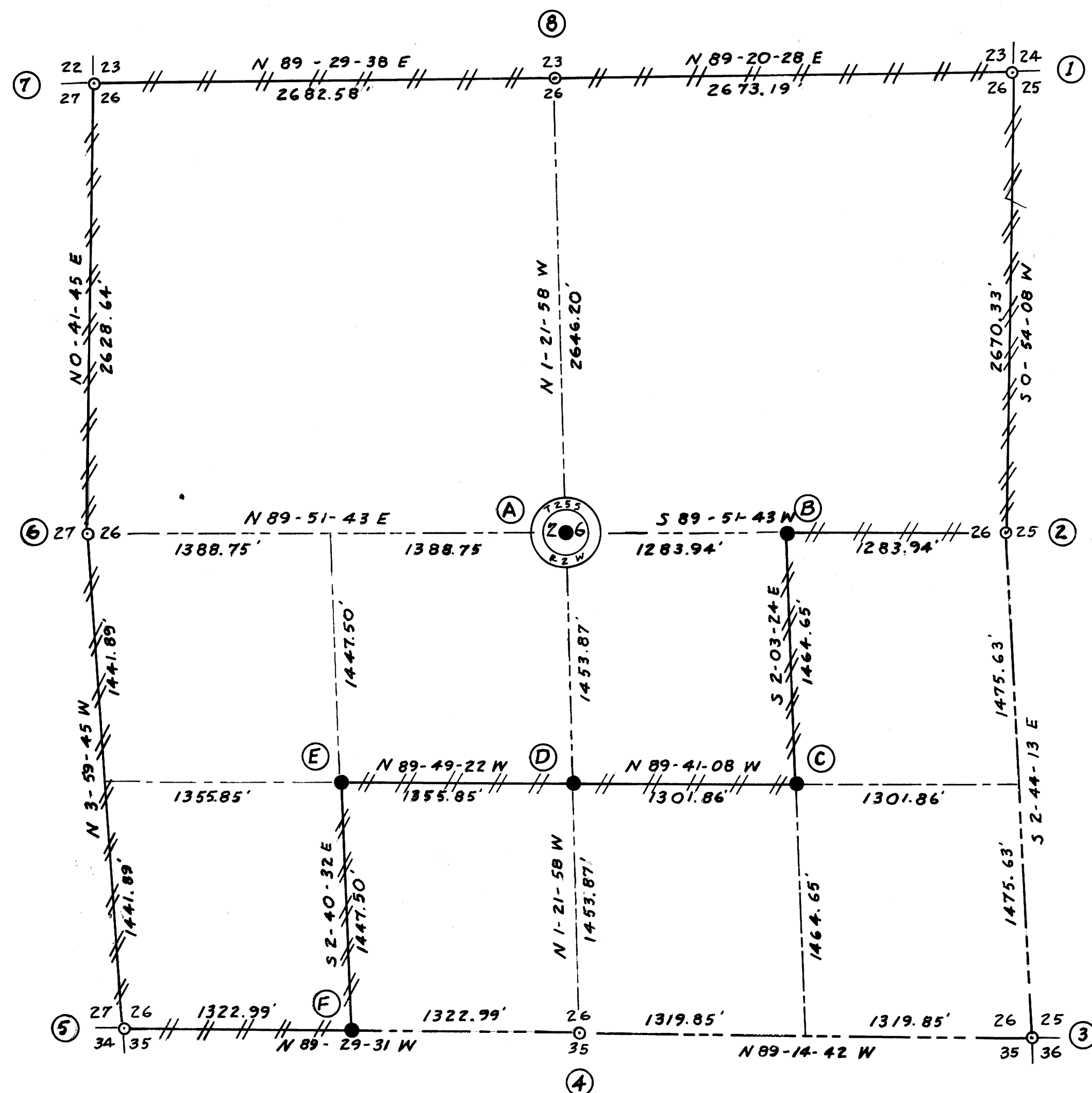


WEYERHAEUSER CO.
SURVEY
OF
SECTION 26, T25S, R2W, WM
DOUGLAS COUNTY, OREGON



CORNERS USED FOR CONTROL

- ① **NORTHEAST SECTION CORNER**
FOUND A 2" IRON PIPE WITH A BLM BRASS CAP
A 14" HEM, N61E, 49.2' BT & WCO REF
A 20" CEDAR, S14W 27.0' WCO REF
A 12" HEM, S20W, 9.0' BT
A 36" HEM, N31W, 8.9' BT & WCO REF
- ② **EAST 1/4 CORNER**
FOUND A 2" IRON PIPE WITH A BLM BRASS CAP
A 38" FIR, N59E, 23 LKS BT
A 32" HEM, S35W, 39 LKS BT
A 8" CEDAR, N33 1/2 W, 10 1/2 LKS NEW BT
- ③ **SOUTHEAST SECTION CORNER**
FOUND A 2" IRON PIPE WITH A BLM BRASS CAP
A 38" FIR, N17E, 57 LKS BT
A 34" FIR, S70E, 78 LKS BT
A 26" FIR, S31W, 127 LKS BT
A 72" FIR, N80W, 40 LKS BT
N 40 W m.f. 7/12/74
- ④ **SOUTH 1/4 CORNER**
FOUND A 6" HEM STUB MK'D 1/4-3
A 1" IRON PIPE WITH A DOUGLAS CO. SURVEYOR'S BRASS CAP 0.5' SOUTH
A 28" WHITE FIR, S4W, 25 LKS BT
A 12" FIR, N10W, 3 LKS BT
A 18" HEM, S25W, 42.0' CS BT
A 18" HEM, N61W, 4.6' CS BT
- ⑤ **SOUTHWEST SECTION CORNER**
FOUND A 2" IRON PIPE WITH A BLM BRASS CAP
A 18" HEM STUB, EAST, 26 LKS BT
A 14" HEM, S14 1/2 W, 43 LKS, BT
A 16" DOWN HEM, N65 W, 32 LKS BT
A 12" HEM, N51W, 47 LKS, NEW BT
- ⑥ **WEST 1/4 CORNER**
FOUND A 2" IRON PIPE WITH A BLM BRASS CAP
A 12" YEW, S81E, 32 LKS BT
A 20" HEM, S50E 31.0' WCO REF
A 36" FIR, S19 1/2 W, 41 LKS NEW BT
A 9" YEW, S80 W, 34 LKS BT
- ⑦ **NORTHWEST SECTION CORNER**
FOUND A 1" IRON PIPE WITH A DOUGLAS CO. SURVEYOR'S BRASS CAP
A 60" SUGAR PINE, N37E, 37.6' BT & WCO REF
A 30" FIR SNAG, S25E, 32 LKS BT
A 8" HEM, S82W, 22.0' WCO REF
A 36" FIR, N43W, 36.2' BT & WCO REF

- ⑧ **NORTH 1/4 CORNER**
FOUND A 2" IRON PIPE WITH A BLM BRASS CAP
A 40" FIR, N67E, 13.1' WCO REF
A 14" HEM, S27E, 20.4' BT & WCO REF
A 28" HEM, N56 1/2 W, 56 LKS BT
N 56 1/2 E m.f. 7/12/74

WEYERHAEUSER COMPANY PROPERTY CORNERS AND CENTER OF SECTION MONUMENTS SET

- Ⓐ **CENTER OF SECTION**
SET A 2" X30" IRON PIPE WITH A BRASS CAP
A RR SPIKE IN A 42" FIR, S55E, 7.8'
A RR SPIKE IN A 48" FIR, N23W, 19.7'
- Ⓑ **CENTER EAST 1/16 CORNER**
SET A 2" X30" IRON PIPE WITH A BRASS CAP
A RR SPIKE IN A 32" FIR, S57E, 21.3'
A RR SPIKE IN A 20" CEDAR, S23W, 14.6'
- Ⓒ **CENTER SOUTHEAST QUARTER**
SET A 2" X30" IRON PIPE WITH A BRASS CAP
A RR SPIKE IN A 20" FIR STUMP, N23E, 10.1'
A RR SPIKE IN A 30" FIR STUMP, S22W, 15.6'
- Ⓓ **CENTER SOUTH 1/16 CORNER**
SET A 2" X30" IRON PIPE WITH A BRASS CAP
A RR SPIKE IN A 40" FIR, S72E, 19.3'
A RR SPIKE IN A 36" CEDAR, S27W, 22.8'
- Ⓔ **CENTER SOUTHWEST QUARTER**
SET A 2" X30" IRON PIPE WITH A BRASS CAP
A RR SPIKE IN A 24" FIR, N7E, 4.9'
A RR SPIKE IN A 36" FIR, S39E, 20.6'
- Ⓕ **WEST 1/16 CORNER BTWN SECS 26 & 35**
A RR SPIKE IN A 11" FIR, N22E, 3.5'
A RR SPIKE IN A 14" FIR, S1W, 10.4'

NOTES :

- (1) BEARING BASED ON SOLAR OBSERVATION
- (2) DISTANCE TO RR SPIKE AT BASE OF TREE REFERS TO HEAD OF SPIKE
- (3) ——— INDICATES PROPERTY LINE MARKED WITH NOTCH IN RED PAINTED BLAZE
- (4) SCALE: 1" = 600'
- (5) SURVEYED OCTOBER 1973 BY TRIANGLE ENGINEERING CO., EUGENE, OREGON

