

SURVEY IN LOT 15, BLOCK 7, PLAT I, S.L. & W. CO.
Sec. 14, T. 25 S., R 5 W., W.M., Douglas County, Oregon.
Surveyed for George E. Smith by Victor M. McLind
October, 1973

Scale: 1" = 200'

Bearings are based on the east line of Lot 15 as per Plat Map.

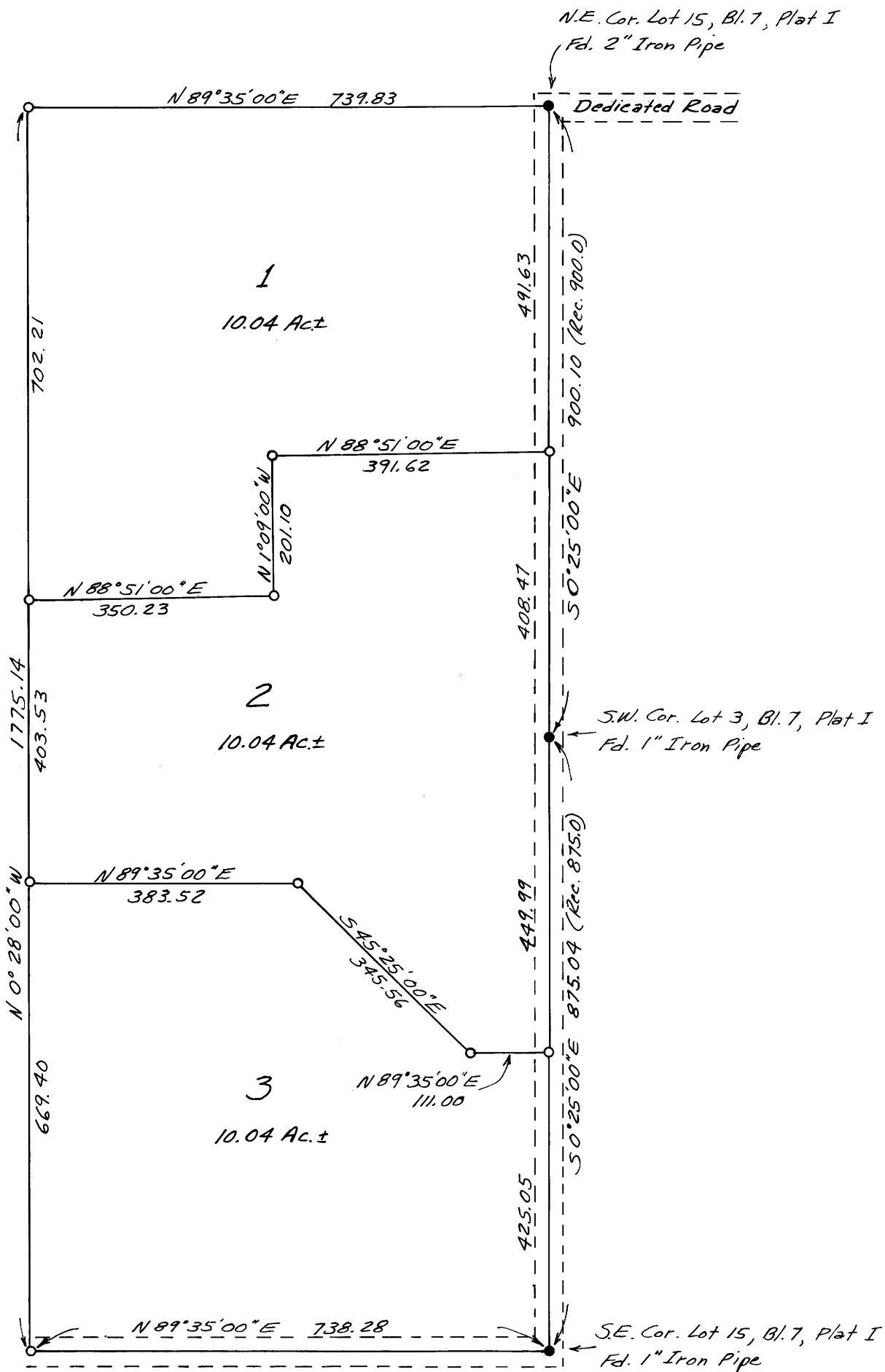
o ~ Indicates Set $\frac{5}{8}$ " x 30" Iron Rod

COUNTY SURVEYORS FILE DATA
DO NOT REMOVE FROM OFFICE

FILED ✓
RECEIVED 24

OCT 3 1973

COUNTY SURVEYOR
DOUGLAS COUNTY, ORE



Victor M. McLind