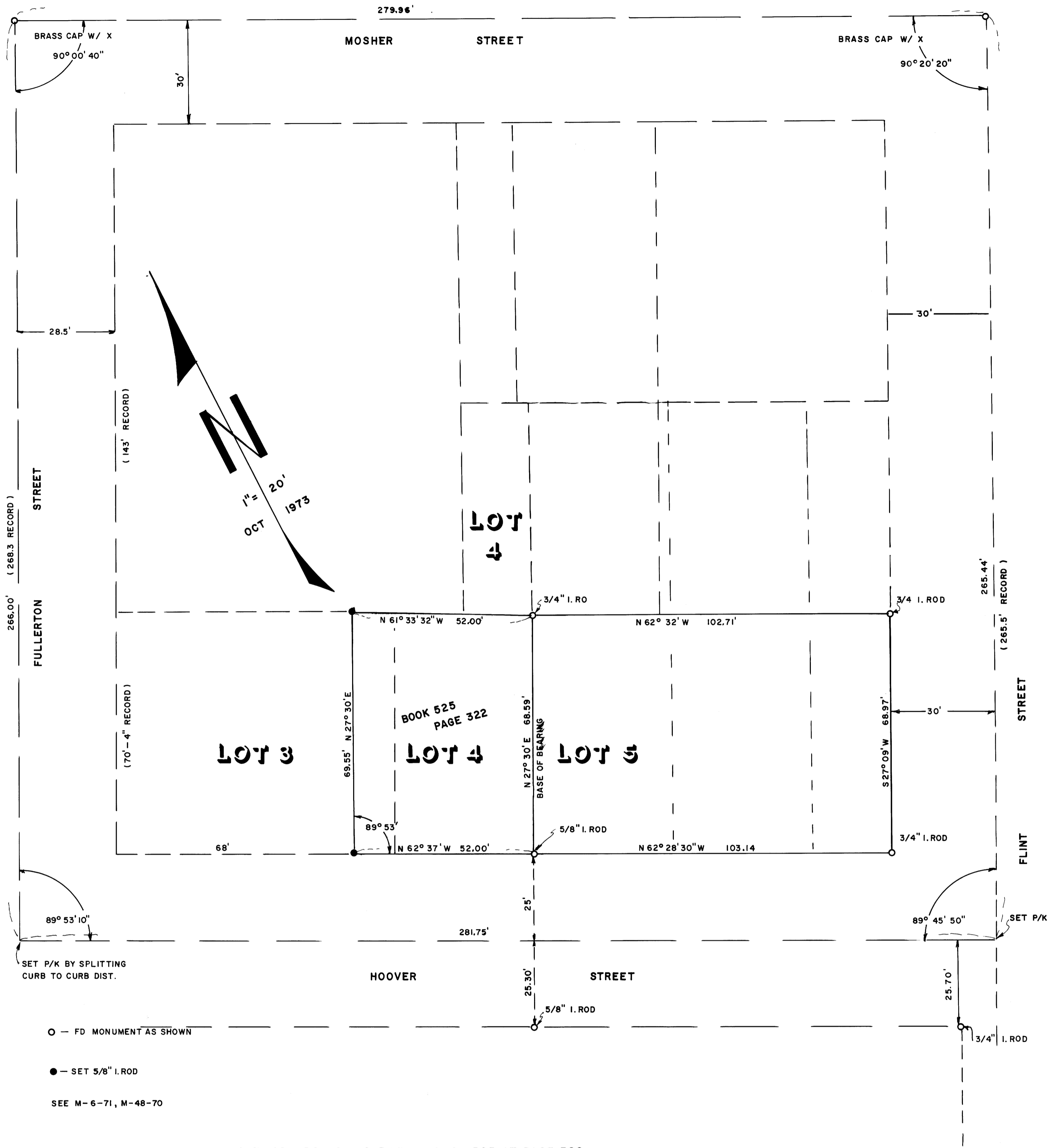


FILED ✓
RECEIVED 2/4

OCT 30 1973

COUNTY SURVEYOR
DOUGLAS COUNTY, ORE.



○ — FD MONUMENT AS SHOWN
 ● — SET 5/8" I. ROD
 SEE M-6-71, M-48-70

SURVEY TO SET CORNERS AS DESCRIBED IN BOOK 525 AT PAGE 322
 DOUGLAS COUNTY RECORDS — SEC 24, T27S, R6W, W.M.
 FOR DOUGCO ROOFING
 LOCATED LOTS 3 & 4, BLOCK I HAMILTON ADDITION TO THE CITY OF
 ROSEBURG
 BY HAROLD BALL — CIVIL ENGINEER



COUNTY SURVEYORS FILE DATA
 DO NOT REMOVE FROM OFFICE