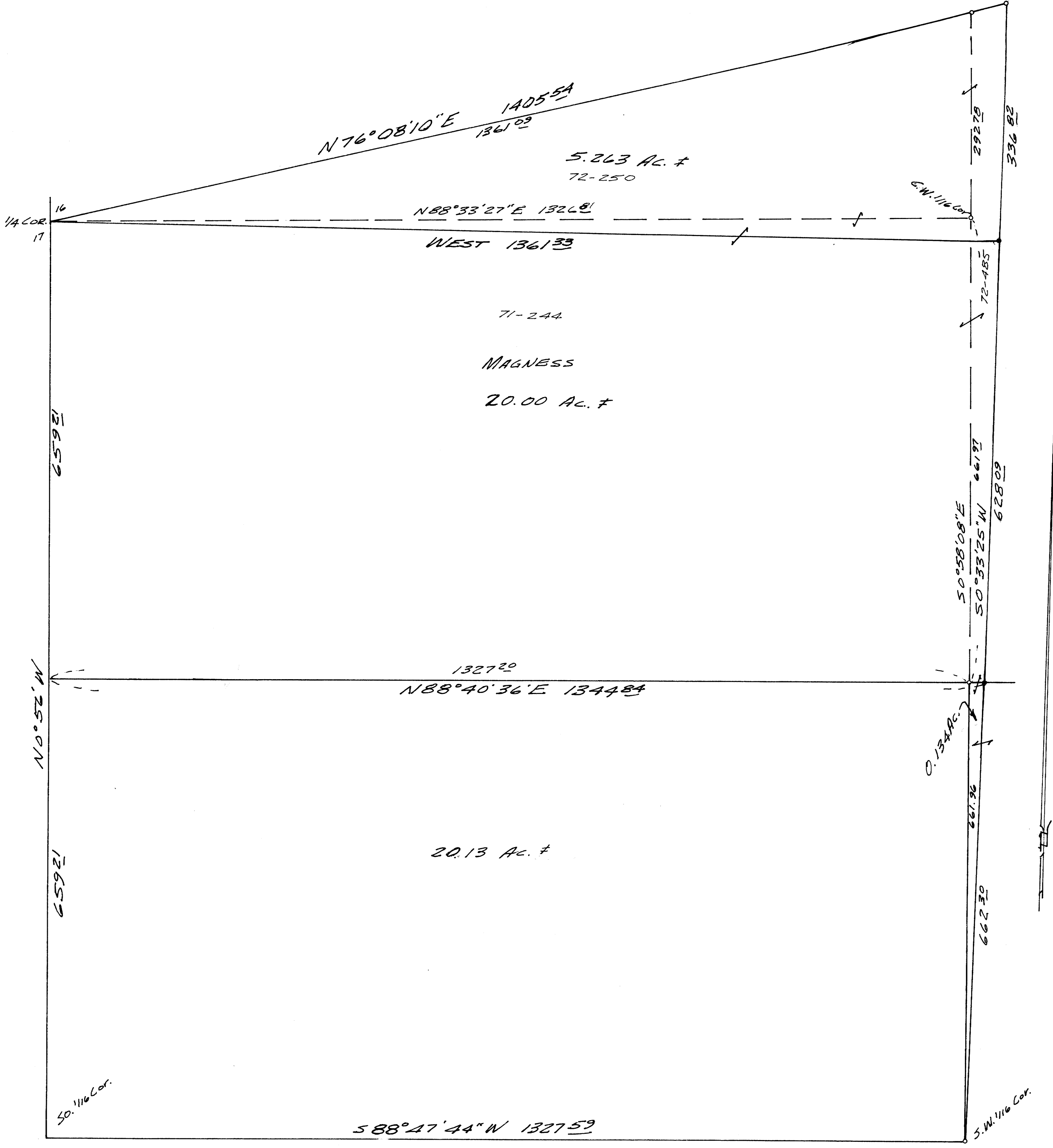


DO NOT REMOVE FROM OFFICE

MAP FILE M51-24



SURVEY FOR DEED DESCRIPTION  
 IN SEC. 16, T. 26 S., R. 6 W. N. M.  
 FOR WM. MAGNESS  
 BY BRUCE ROGERS  
 OCT., 1973  
 1" = 100'  
 BASED ON C.S. M. 50-21 & M 50-57

FILED ✓  
 RECEIVED 7/4  
 OCT 26 1973  
 COUNTY SURVEYOR  
 D. J. HARRIS  
 D. J. HARRIS

REGISTERED  
 LAND SURVEYOR  
 Bruce R. Rogers  
 BRUCE R. ROGERS  
 P.S.

○ - FOUND 5/8" IRON ROD  
 ● - SET 5/8" IRON ROD

MAP FILE M51-24