

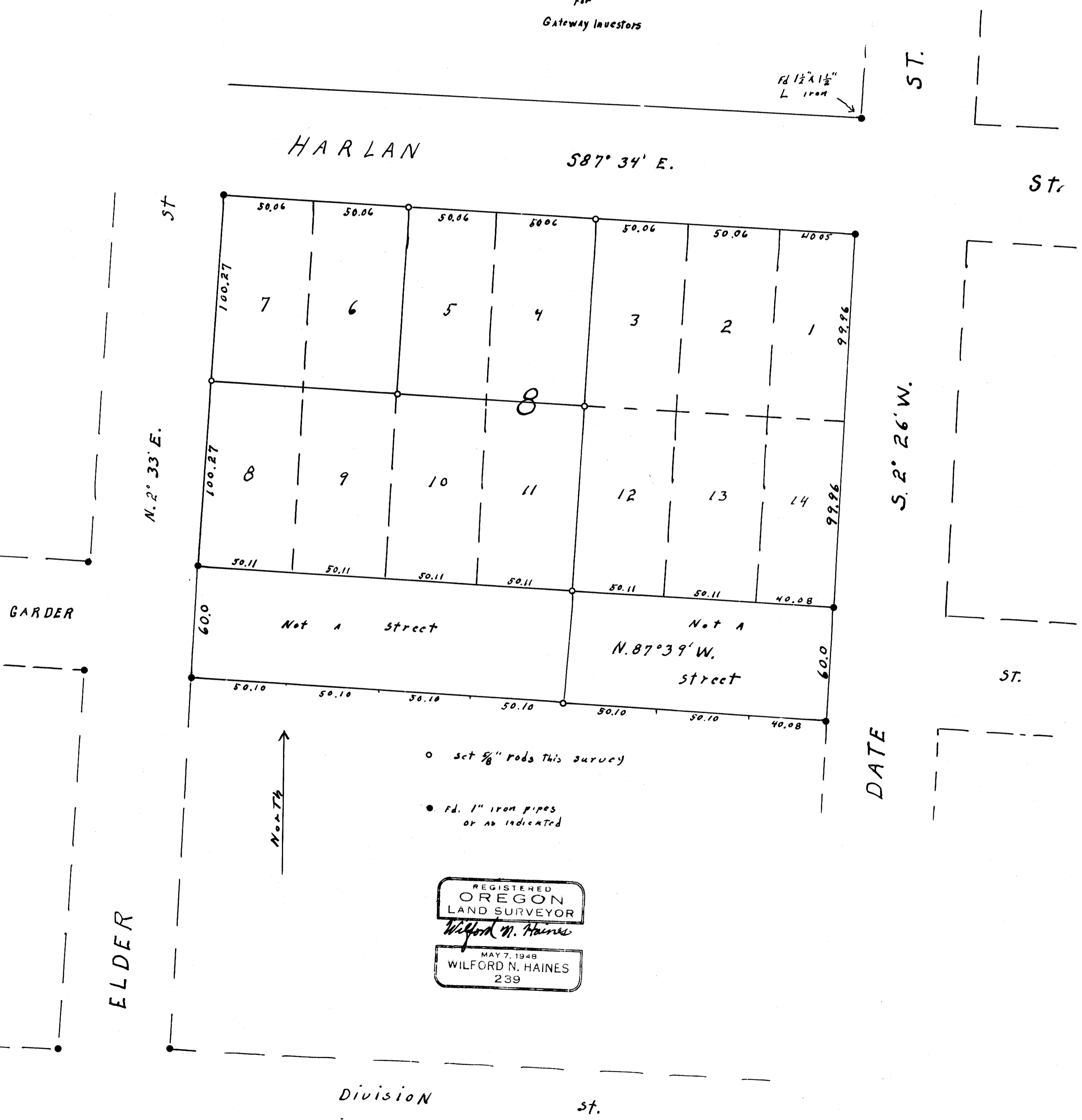
FILED 24
RECEIVED m2
OCT 19 1973
COUNTY SURVEYOR
DOUGLAS COUNTY, ORE.
m2

T. 22 S. R. 5 W. W.M. SECT. 17

GARDNERS ADDITION TO DRAIN

scale: 1" = 40' Sept. 1973

for
Gateway Investors



ST.

ST.

ST.

ST.

ST.

DATE