

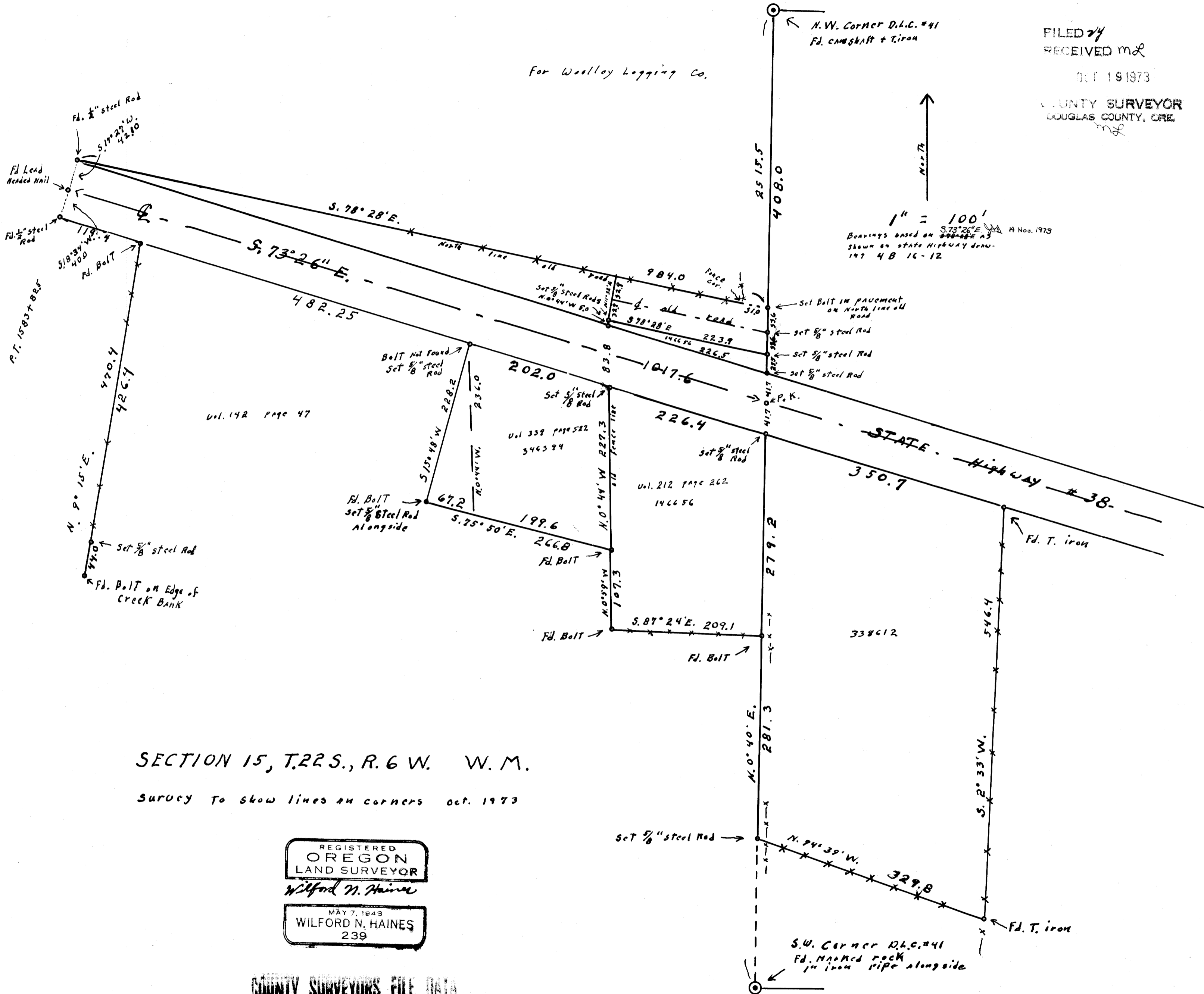
For Woolley Logging Co.

FILED 24
RECEIVED m2

OCT 19 1973

COUNTY SURVEYOR
DOUGLAS COUNTY, ORE.
m2

1" = 100'
Bearings based on S 73° 26' E H No. 1973
shown on state highway draw.
197 4 B 16-12



SECTION 15, T.22S., R.6 W. W.M.

Survey to show lines and corners Oct. 1973

REGISTERED
OREGON
LAND SURVEYOR
Wilford N. Haines

MAY 7, 1949
WILFORD N. HAINES
239

COUNTY SURVEYORS FILE DATA
DO NOT REMOVE FROM OFFICE