

SURVEY IN SEC. 4, T25S, R5W, W.M., AND IN MILL ADDITION TO OAKLAND

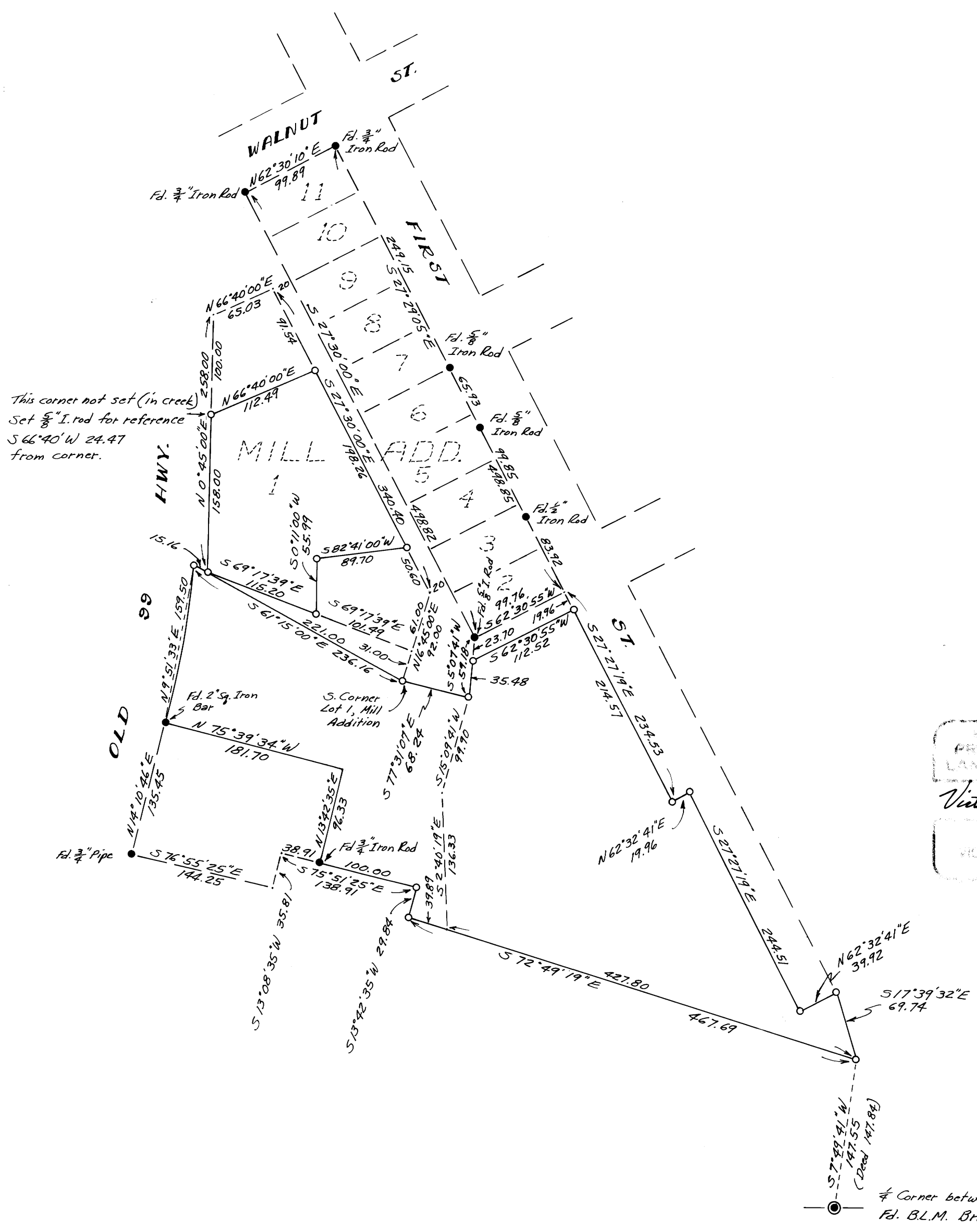
Surveyed for Aldred Bros. by Victor M. McLind
October 1973
Scale: 1"=100'

COUNTY SURVEYORS FILE DATA
DO NOT REMOVE FROM OFFICE

FILED 7/4
RECEIVED
OCT 19 1973
COUNTY SURVEYOR
DOUGLAS COUNTY, ORE.
mf

Bearings are based on the Southwesterly line of Lots
2 through 11 of Mill Addition to Oakland.

- ~ Indicates Set $\frac{5}{8}$ " x 30" Iron Rod unless otherwise noted
- ~ Indicates found monument



REGISTRATION
PROFESSIONAL
LAND SURVEYOR
Victor M. McLind
OREGON
JULY 17 1968
VICTOR M. McLind
1974