

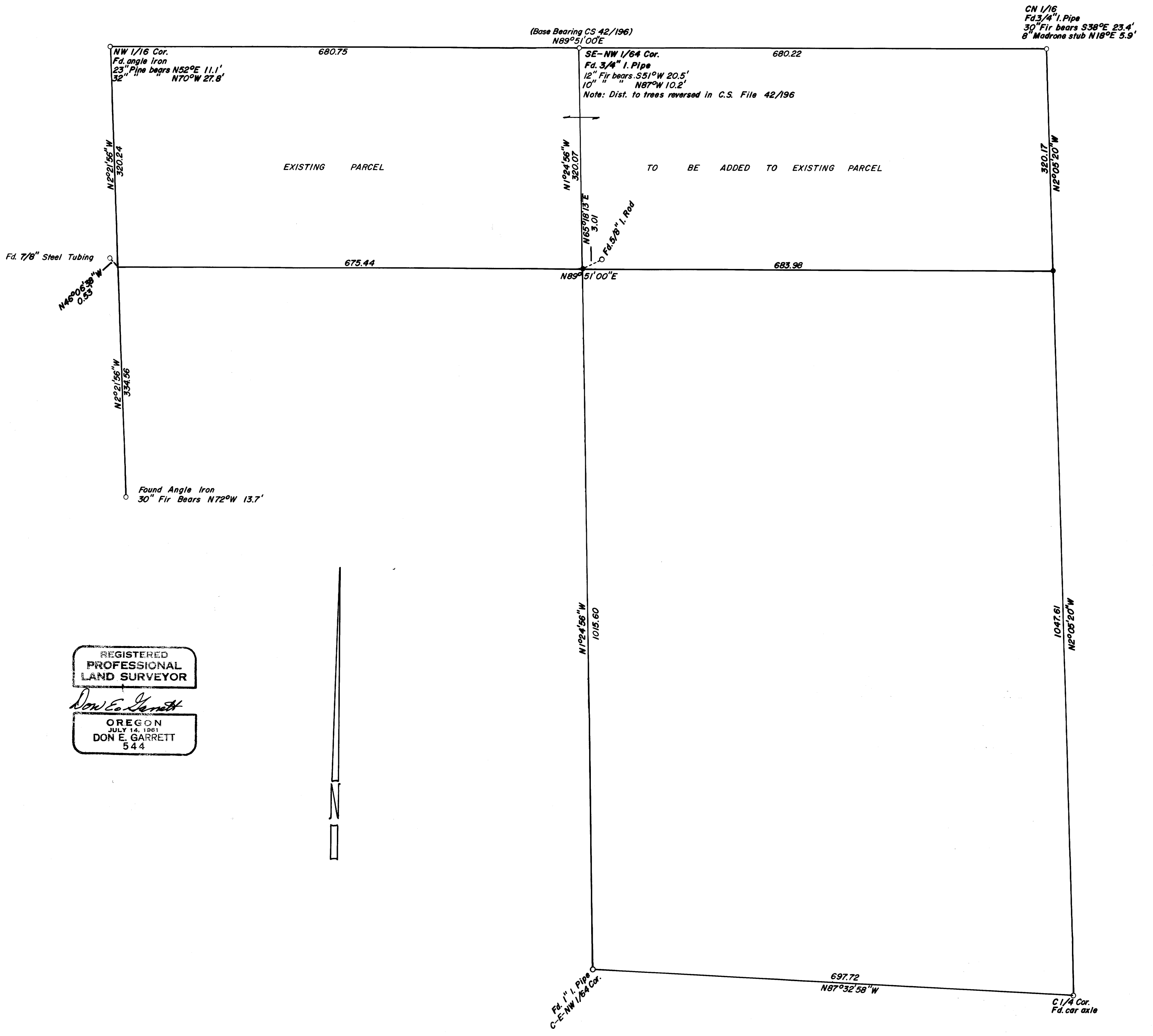
DO NOT REMOVE FROM OFFICE

SURVEY IN SECTION 26, TOWNSHIP 32 SOUTH, RANGE 5 WEST, WILLAMETTE MERIDIAN
Surveyed for Bruce Mobus by Don E. Garrett
October 1973

Scale 1" = 100'

• - Set 5/8" I. Rod

Handwritten notes and signatures in the top right corner.



REGISTERED
PROFESSIONAL
LAND SURVEYOR

Don E. Garrett

OREGON
JULY 14, 1961
DON E. GARRETT
544