

MAP FILE M51-18

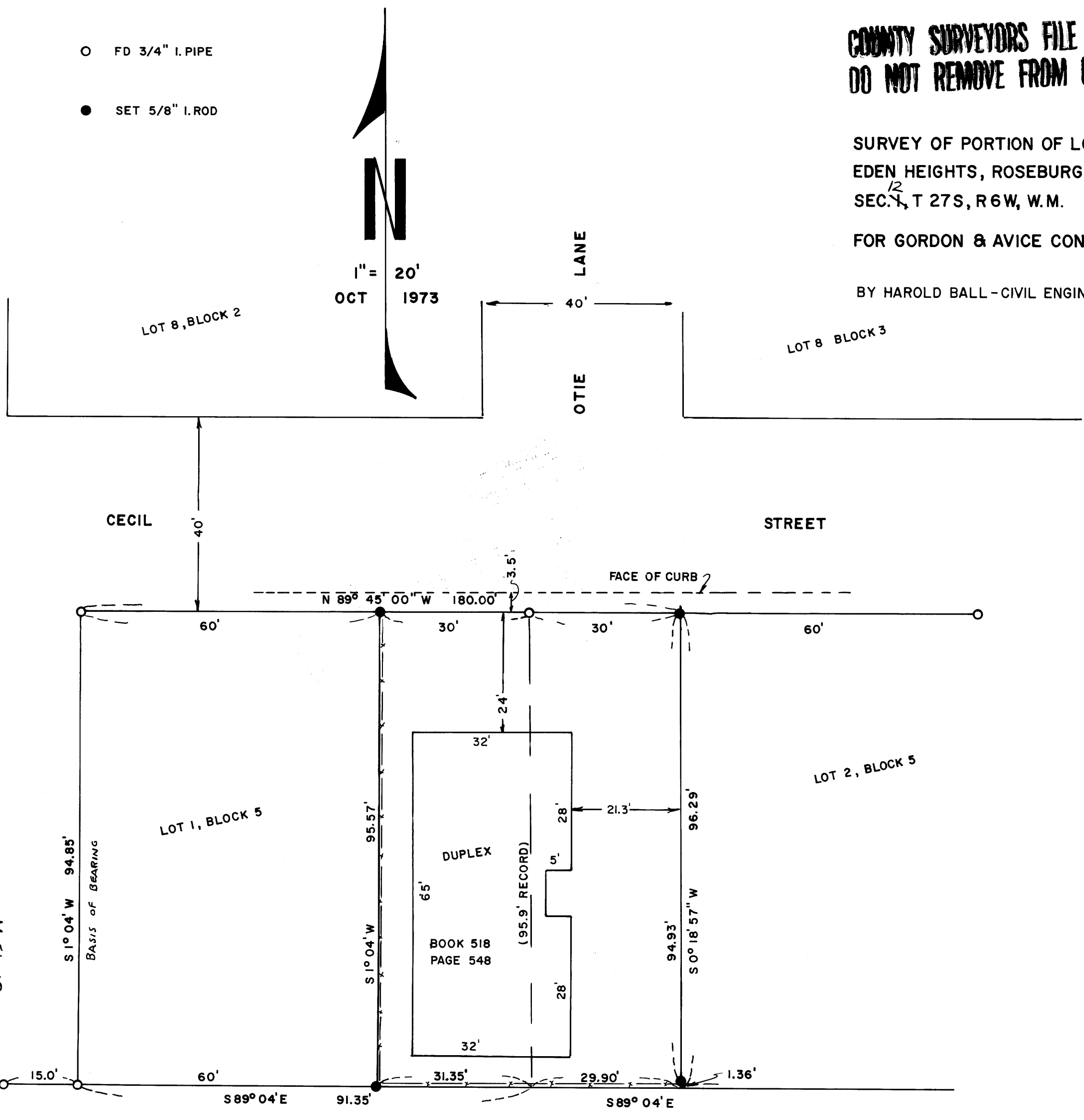
COUNTY SURVEYORS FILE DATA  
DO NOT REMOVE FROM OFFICE

SURVEY OF PORTION OF LOTS 1 AND 2, BLOCK 5  
EDEN HEIGHTS, ROSEBURG, ORE  
SEC. <sup>12</sup> T 27 S, R 6 W, W.M.

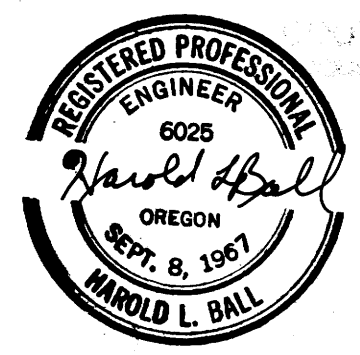
FOR GORDON & AVICE CONKLE

BY HAROLD BALL - CIVIL ENGINEER - ROSEBURG, ORE.

- FD 3/4" I. PIPE
- SET 5/8" I. ROD



FILED 29  
RECEIVED  
OCT 18 1973



COUNTY SURVEYOR  
DELLAS COUNTY, ORE.  
ML

MAP FILE M51-18