

FILED 24
RECEIVED 24

OCT 17 1973

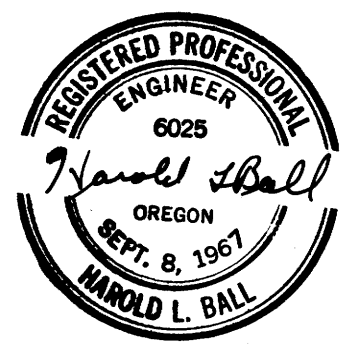
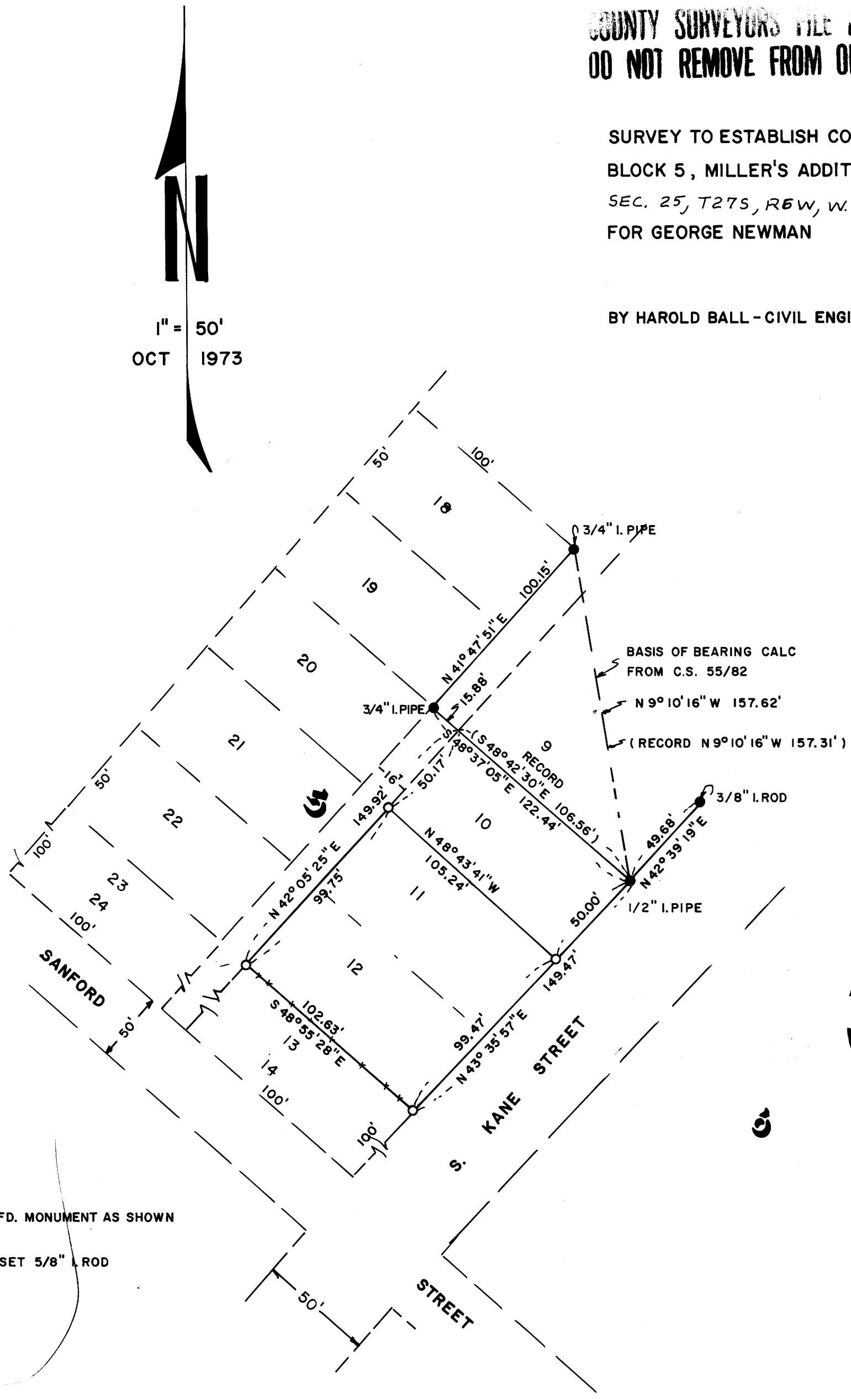
COUNTY SURVEYOR
DOUGLAS COUNTY, ORE.
ml

COUNTY SURVEYORS FILE DATA
DO NOT REMOVE FROM OFFICE

SURVEY TO ESTABLISH CORNERS OF LOTS 11 & 12
BLOCK 5, MILLER'S ADDITION TO ROSEBURG, ORE.
SEC. 25, T27S, R6W, W.M.
FOR GEORGE NEWMAN

BY HAROLD BALL - CIVIL ENGINEER - ROSEBURG

1" = 50'
OCT 1973



- FD. MONUMENT AS SHOWN
- SET 5/8" I. ROD