

COUNTY SURVEYORS FILE DATA  
DO NOT REMOVE FROM OFFICE

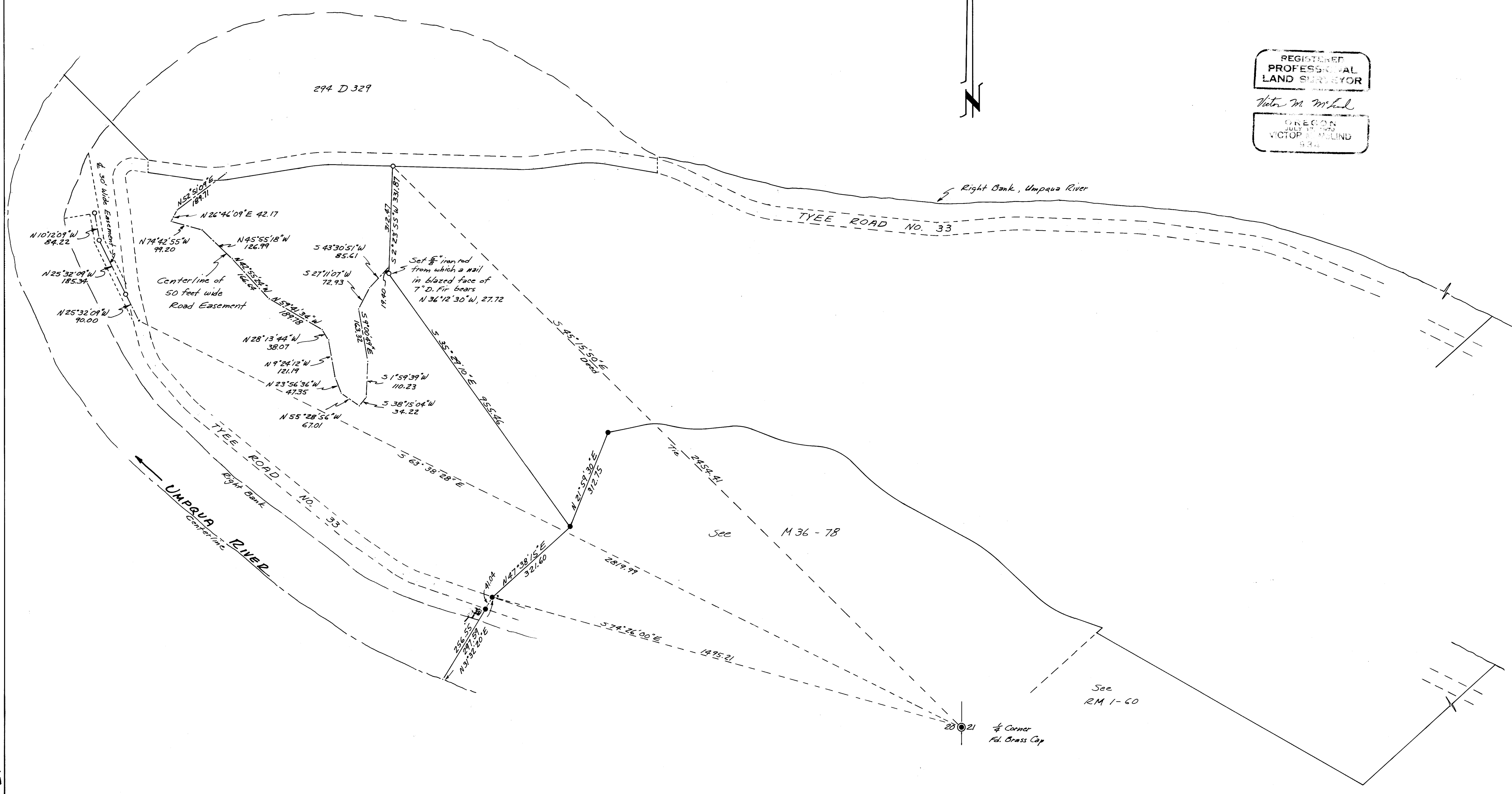
SURVEY IN SECTIONS 20 & 21, T. 24 S., R. 7 W., W.M.  
Surveyed for Ed Simmons and Bruce Fuller by Victor M. McLind  
Sept. 1973  
Scale: 1" = 200'

Bearings are based on the northwesterly line of Tr. 33 as per M 36-78

- ~ Indicates found  $\frac{5}{8}$ " iron rod
- ~ Indicates Set  $\frac{5}{8}$ " x 30" iron rod

FILED ✓  
RECEIVED 27  
OCT 15 1973  
COUNTY SURVEYOR  
DOUGLAS COUNTY, ORE.  
ml

REGISTERED  
PROFESSIONAL  
LAND SURVEYOR  
Victor M. McLind  
OREGON  
JULY 27 1970  
VICTOR M. MCLIND  
634



MAP FILE M51-13

MAP FILE M51-13