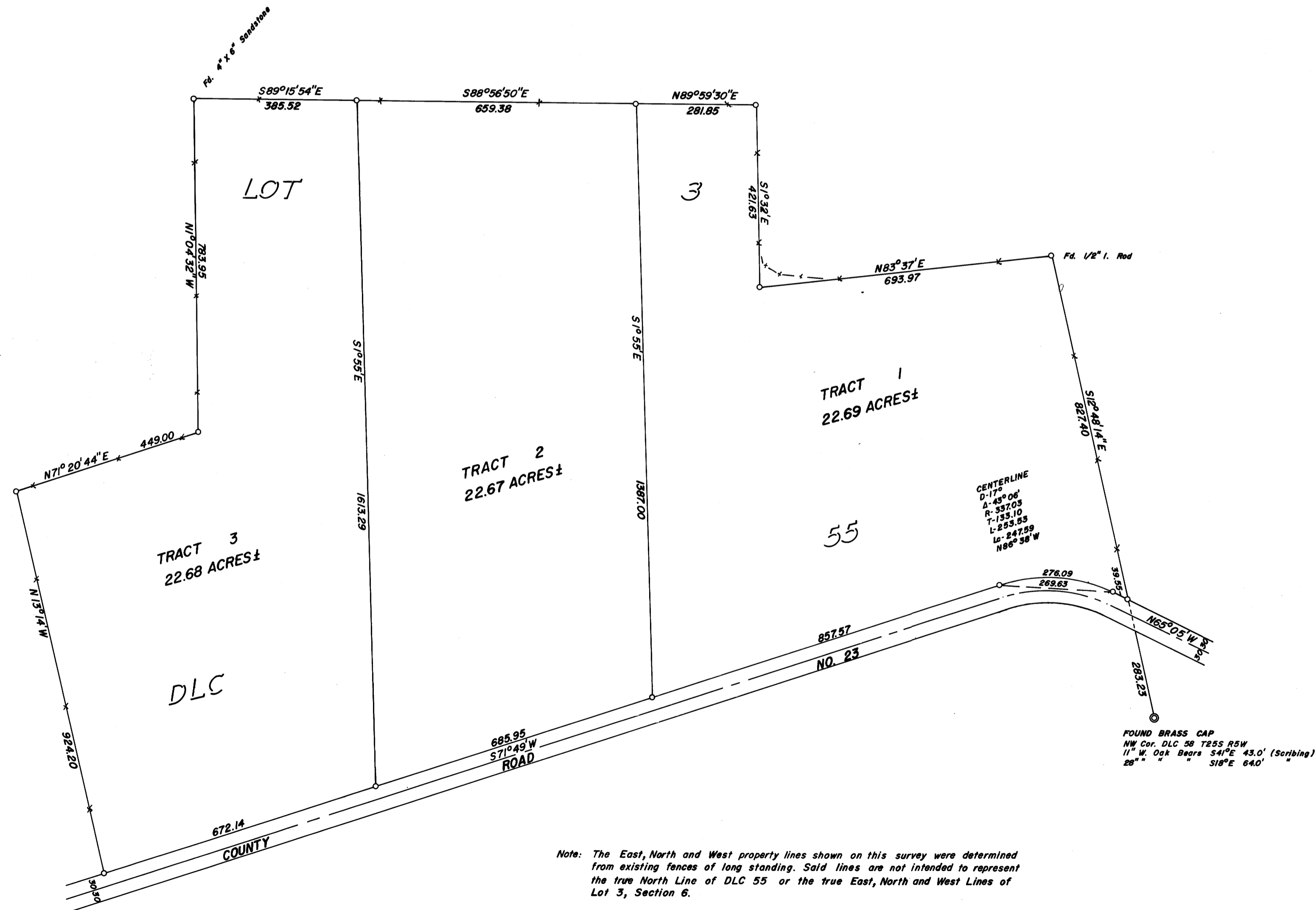


SURVEY IN SECTIONS 5 & 6, TOWNSHIP 25 SOUTH, RANGE 5 WEST, WILLAMETTE MERIDIAN
Surveyed for Myron Minich by Don E. Garrett
October 12, 1973

Scale 1" = 200'

Bearings are based on a Solar Observation taken October 4, 1973
C-Set 5/8" I. Rod



REGISTERED
PROFESSIONAL
LAND SURVEYOR

Don E. Garrett

OREGON
JULY 14, 1961
DON E. GARRETT
544

Note: The East, North and West property lines shown on this survey were determined from existing fences of long standing. Said lines are not intended to represent the true North Line of DLC 55 or the true East, North and West Lines of Lot 3, Section 6.