

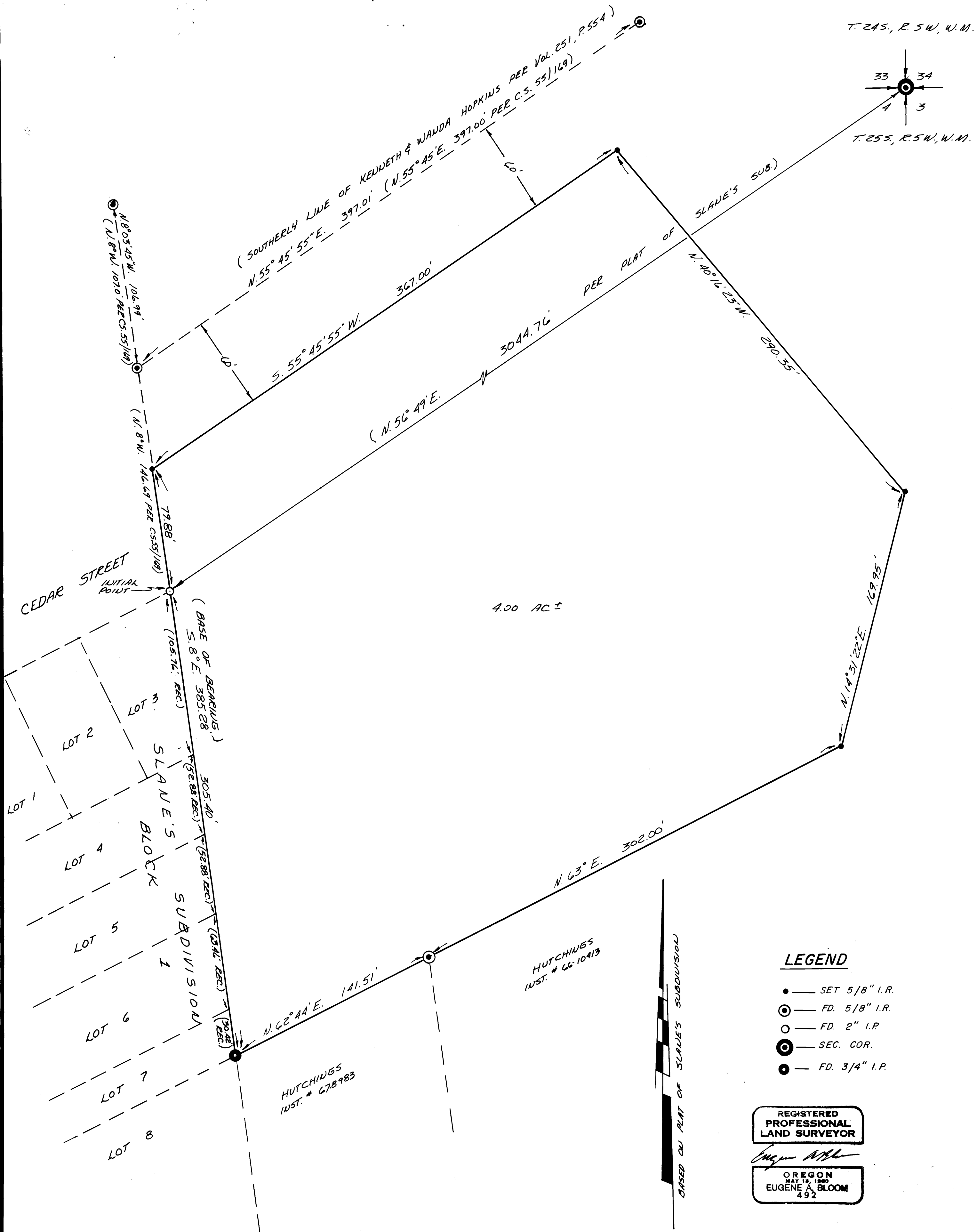
SURVEY FOR PROPERTY CORNERS IN THE NORTH 1/2 SEC. 4, T.25S., R.5W., W.M. FOR — DENNIS DUNN BY — BAUGHMAN SURVEYING SERVICE

FILED
RECEIVED ML
OCT 10 1973
COUNTY SURVEYOR
DOUGLAS COUNTY, ORE.
27

OCTOBER 1973

COUNTY SURVEYORS FILE DATA
DO NOT REMOVE FROM OFFICE

SCALE 1" = 40'



LEGEND

- — SET 5/8" I.P.
- ⊙ — FD. 5/8" I.P.
- — FD. 2" I.P.
- ⊗ — SEC. COR.
- — FD. 3/4" I.P.

REGISTERED
PROFESSIONAL
LAND SURVEYOR

Eugene A. Bloom
OREGON
MAY 19, 1960
EUGENE A. BLOOM
492

BASED ON PLAT OF SLANE'S SUBDIVISION