

DO NOT REMOVE FROM OFFICE

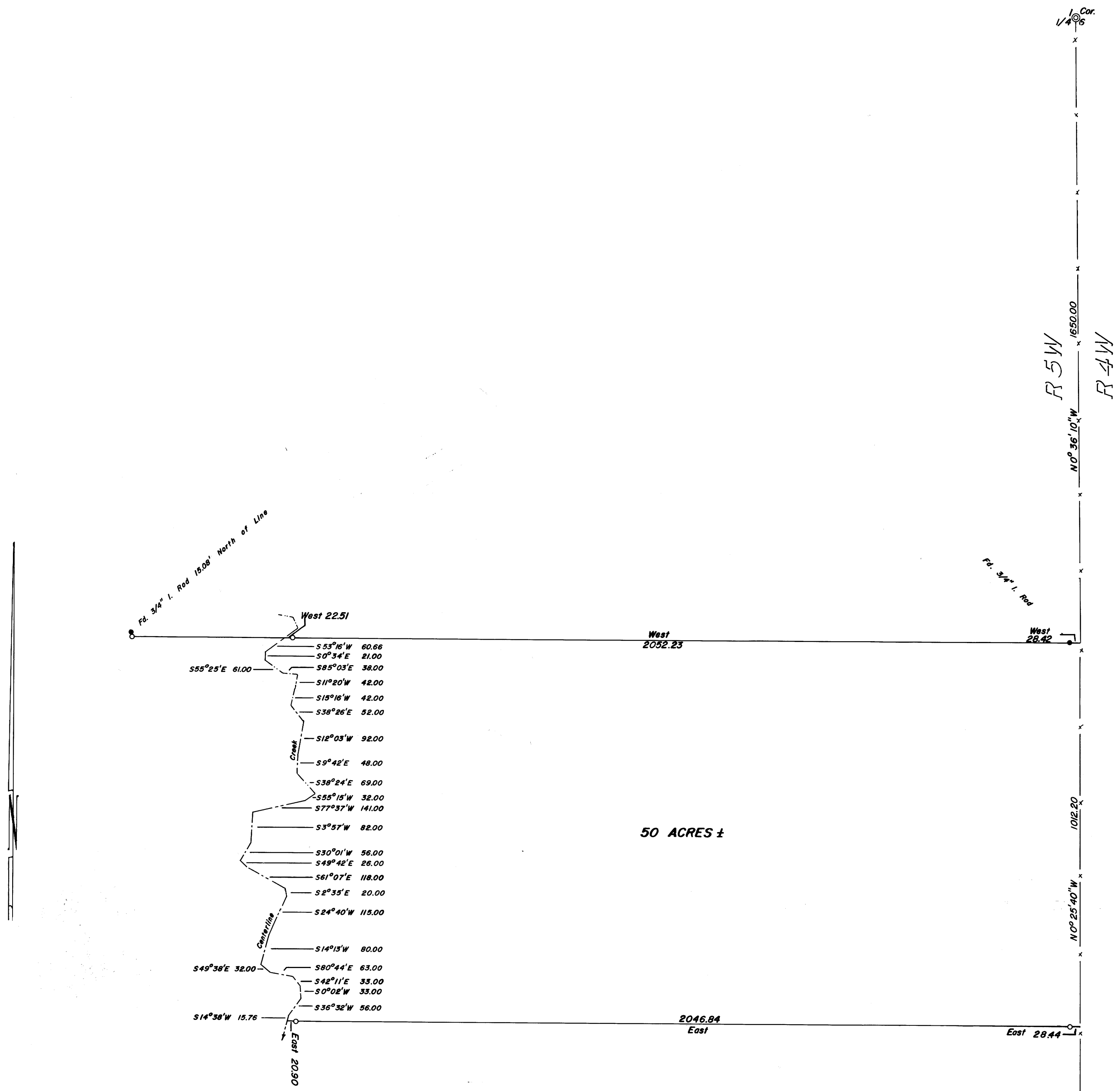
Handwritten notes and signatures in the top right corner.

SURVEY IN SECTION 1, TOWNSHIP 24 SOUTH, RANGE 5 WEST, WILLAMETTE MERIDIAN
Surveyed for Don Myers by Don E. Garrett
October 1973

Scale 1" = 200'

O - Set 5/8" I. Rod
Bearings are based on a Solar Observation taken Sept. 21, 1973.

Found Brass Cap
14" Flt. Brgs S32 1/2° E 9.9' (Spar)
14" Oak S26° W 23.7'



REGISTERED
PROFESSIONAL
LAND SURVEYOR
Don E. Garrett
OREGON
JULY 14, 1951
DON E. GARRETT
544