

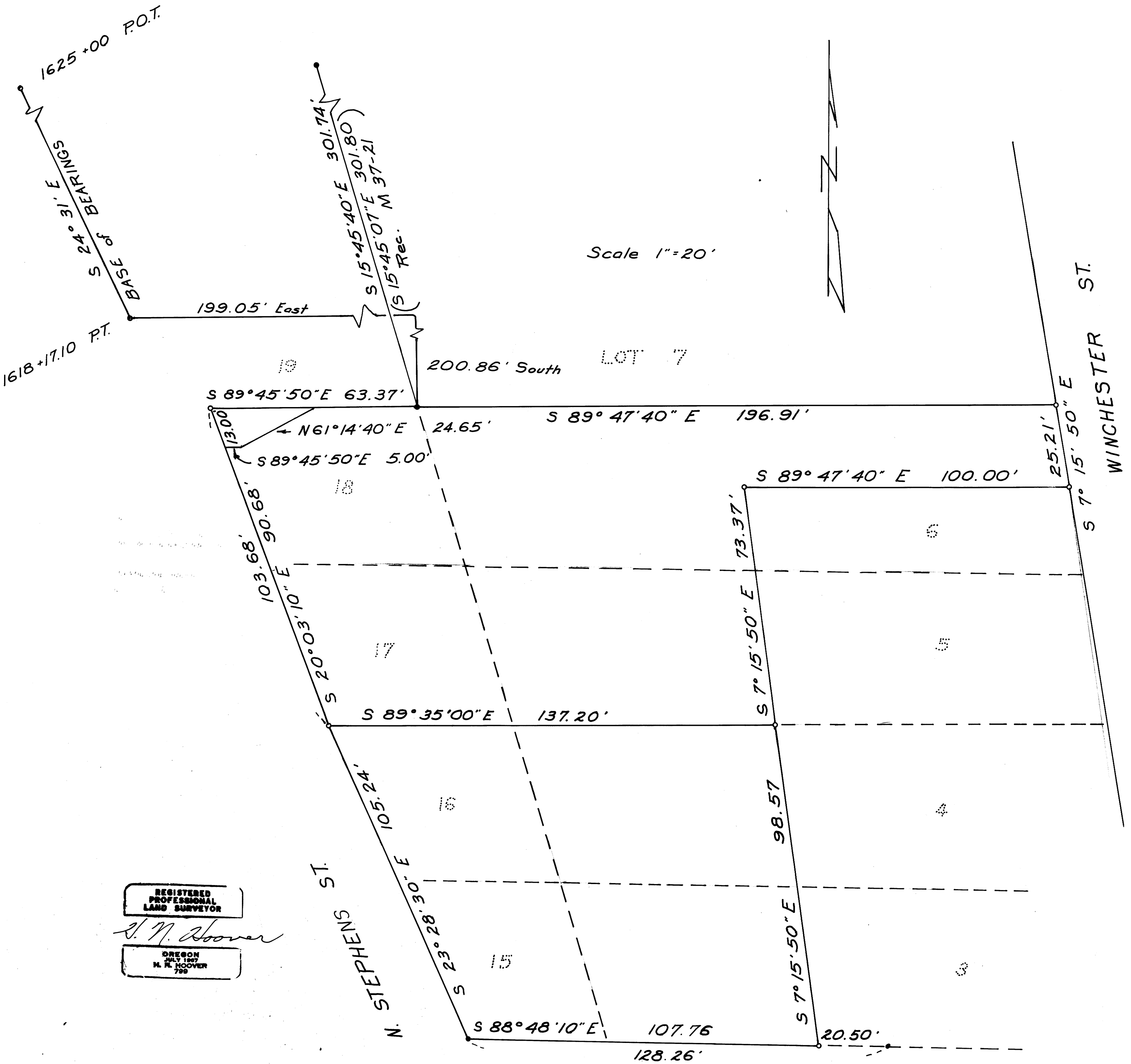
SURVEY TO ESTABLISH PROPERTY CORNERS
IN BLOCK I, NORTH PARK ADDITION,
SECTION 18, TWP. 27 S, RGE. 5 W, WM.
FOR A. KNUDTSON, SEPT. 1973

FILED
RECEIVED

OCT 1 1973

COUNTY SURVEYOR
DOUGLAS COUNTY, ORE.
ml

- Fd. 5/8" Iron Rod
- Set 5/8" Iron Rod
- Fd OSHD Monument



REGISTERED
PROFESSIONAL
LAND SURVEYOR

H. N. Hoover

OREGON
JULY 1967
H. N. HOOVER
799