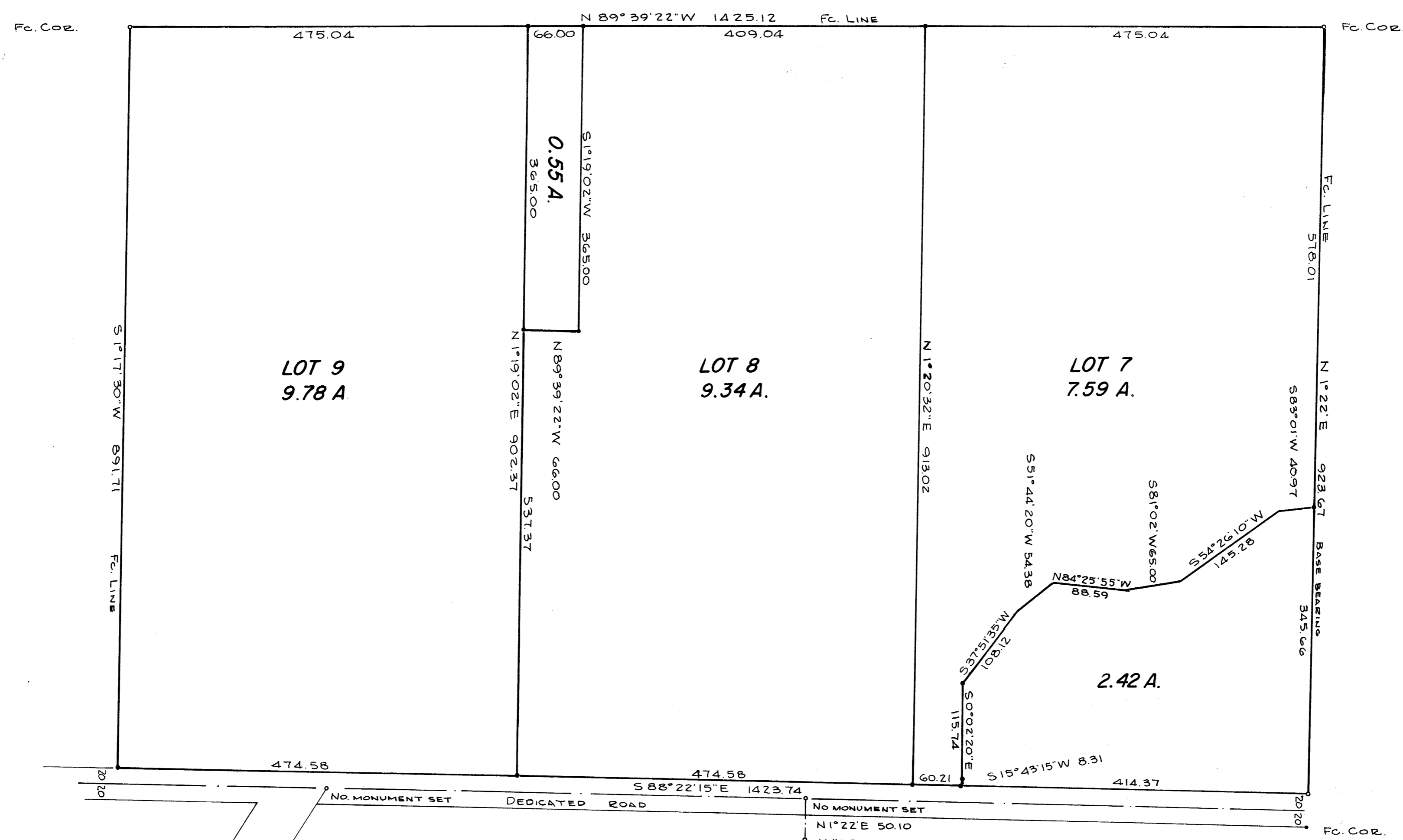


FILED
RECEIVED
COUNTY SURVEYOR
DOUGLAS COUNTY ORE



NOTE:
LOT LINES ARE IN CENTERLINE OF ROAD.

BEARINGS BASED ON C.S. MAP FILE M 2-50
• DENOTES 5/8" I.R. SET

SURVEY TO ESTABLISH LOTS 7, 8 AND 9 - BL. 8
SUTHERLIN LAND AND WATER CO., PLAT M
SECTION 13, T.25 S., R.6 W., W.M.
SURVEYED FOR WESTERN LAND MANAGEMENT, INC.
SURVEYED BY R.H.GEE SEPTEMBER, 1973
SCALE 1" = 100'



COUNTY SURVEYORS FILE DATA
DO NOT REMOVE FROM OFFICE