

COUNTY SURVEYORS FILE DATA
DO NOT REMOVE FROM OFFICE

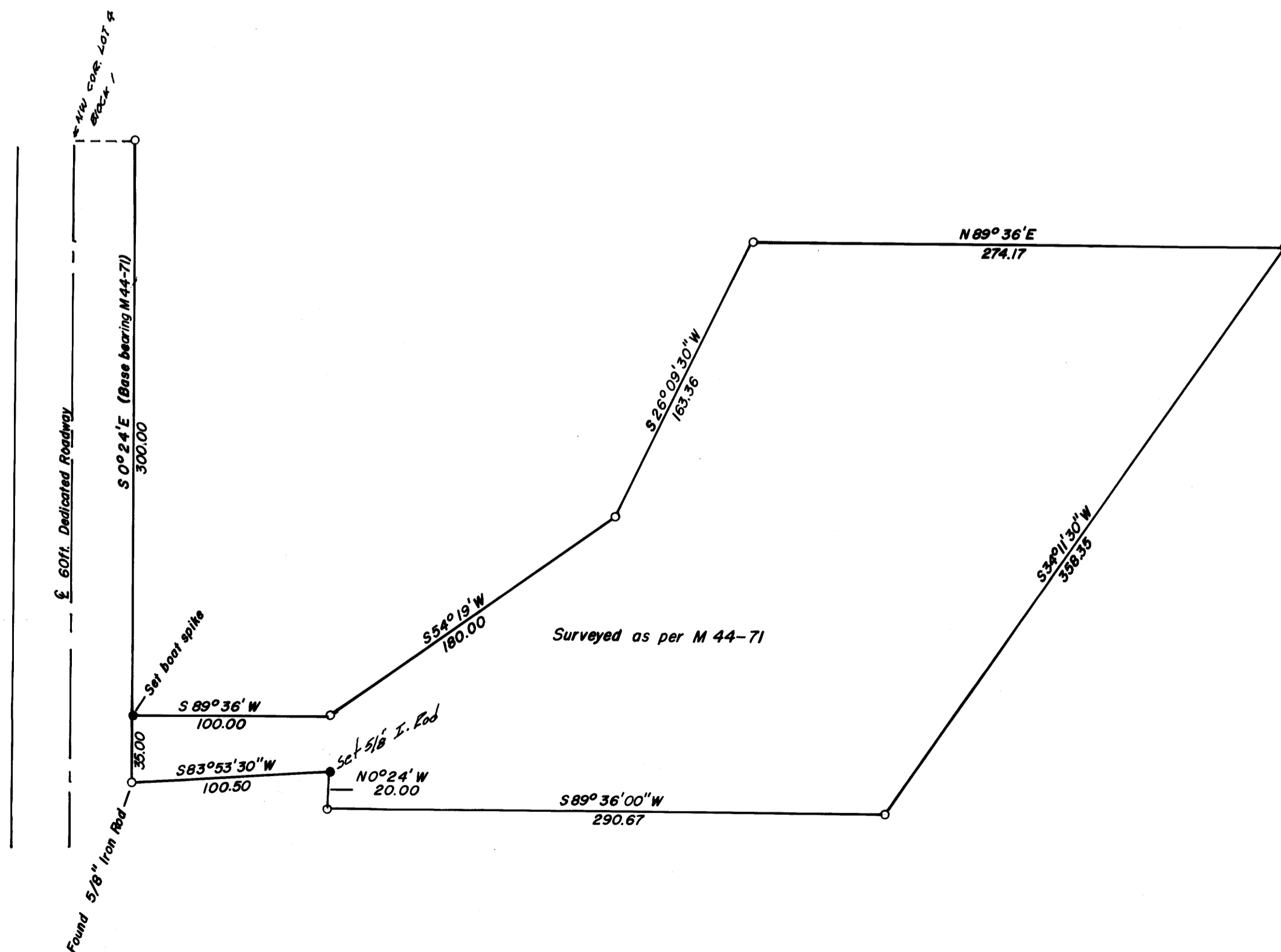
SURVEY IN LOTS 3 & 4, BLOCK 1, PLAT D, UMPQUA PARK FRUITLANDS
SECTION 25, TOWNSHIP 27 SOUTH, RANGE 6 WEST, WILLAMETTE MER.
Surveyed for Gerald Davenport by Don E. Garrett
Sept., 1973

o Found 3/4" Iron Pipe

Scale 1" = 60'

FILED
RECORDED *MR*
SEP 27 1973
COUNTY CLERK
DUGLAS COUNTY, OREGON
MR

REGISTERED
PROFESSIONAL
LAND SURVEYOR
Don E. Garrett
CLERK OF SUPERIOR COURT
DUGLAS COUNTY, OREGON
1973



MAP FILE M 50 - 73

MAP FILE M 50 - 73