

COUNTY SURVEYORS FILE DATA
DO NOT REMOVE FROM OFFICE

SURVEY IN SECTION 8, T29S, R4W, WILLAMETTE MERIDIAN
Surveyed for Ron Emmott
Surveyed by Don E. Garrett
Sept., 1973

Scale 1" = 300'

FILED
RECEIVED m&R
SEP. 2 1973
COUNTY SURVEYOR
DOUGLAS COUNTY, OREGON
m&R

0 Set 5/8" Iron Rod
Bearings based on solar observation taken Sept. 12, 1973
Notes on Cedestral renewal of 1/4 corner 38, 39 not yet published

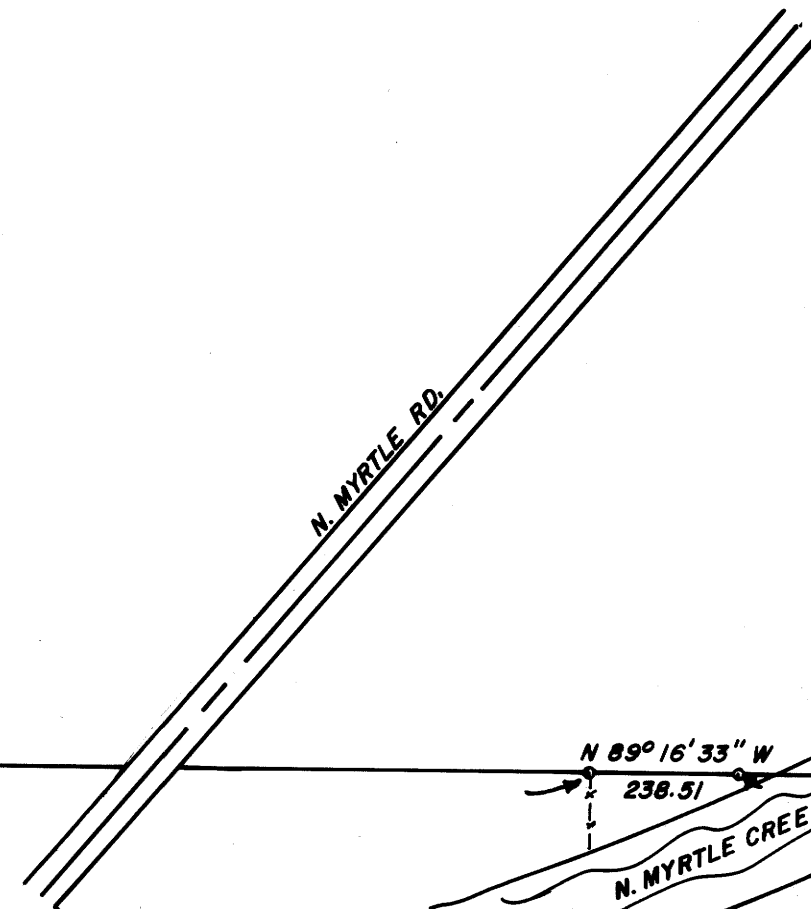
REGISTERED
PROFESSIONAL
LAND SURVEYOR
Don E. Garrett
OREGON
JULY 14, 1961
DON E. GARRETT
544



Fd. brass cap marked CS Office 1/4
Sec 7, Sec 8
12" Fir bears N66°W 9.3'
12" " " 314°E 42.3'

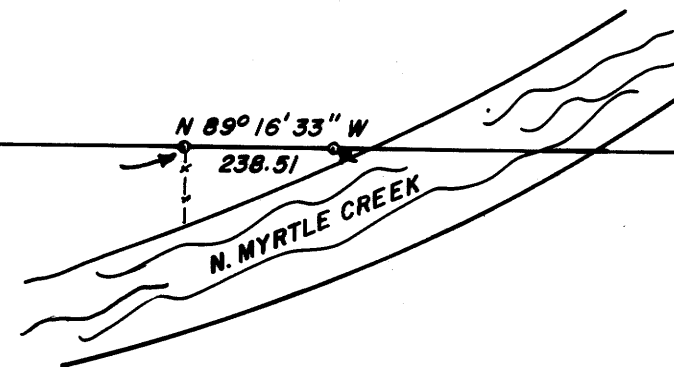
1/4 8
7 Cor

1915.53



N 89° 16' 33" W

238.51



N. MYRTLE CREEK

2796.71

1/4 9
8 Cor

Fd. brass cap marked T29S R4W 1/4 38, 39
15" Cedar bears N61°E 15.8' 1969
12" " " S61°W 7.9'

MAP FILE M50-69

MAP FILE M50-69