

# SURVEY FOR PROPERTY CORNERS IN D.L.C. NO. 38, SEC. 10, T.26S., R.4W., W.M. FOR - R. N. CAMERON (UPDEGRAVE PROP.) BY - BURTON W. HOLT

SEPTEMBER 1973

COUNTY SURVEYORS FILE DATA  
DO NOT REMOVE FROM OFFICE

SCALE 1" = 100'

FILED  
RECEIVED

SEP 12 1973

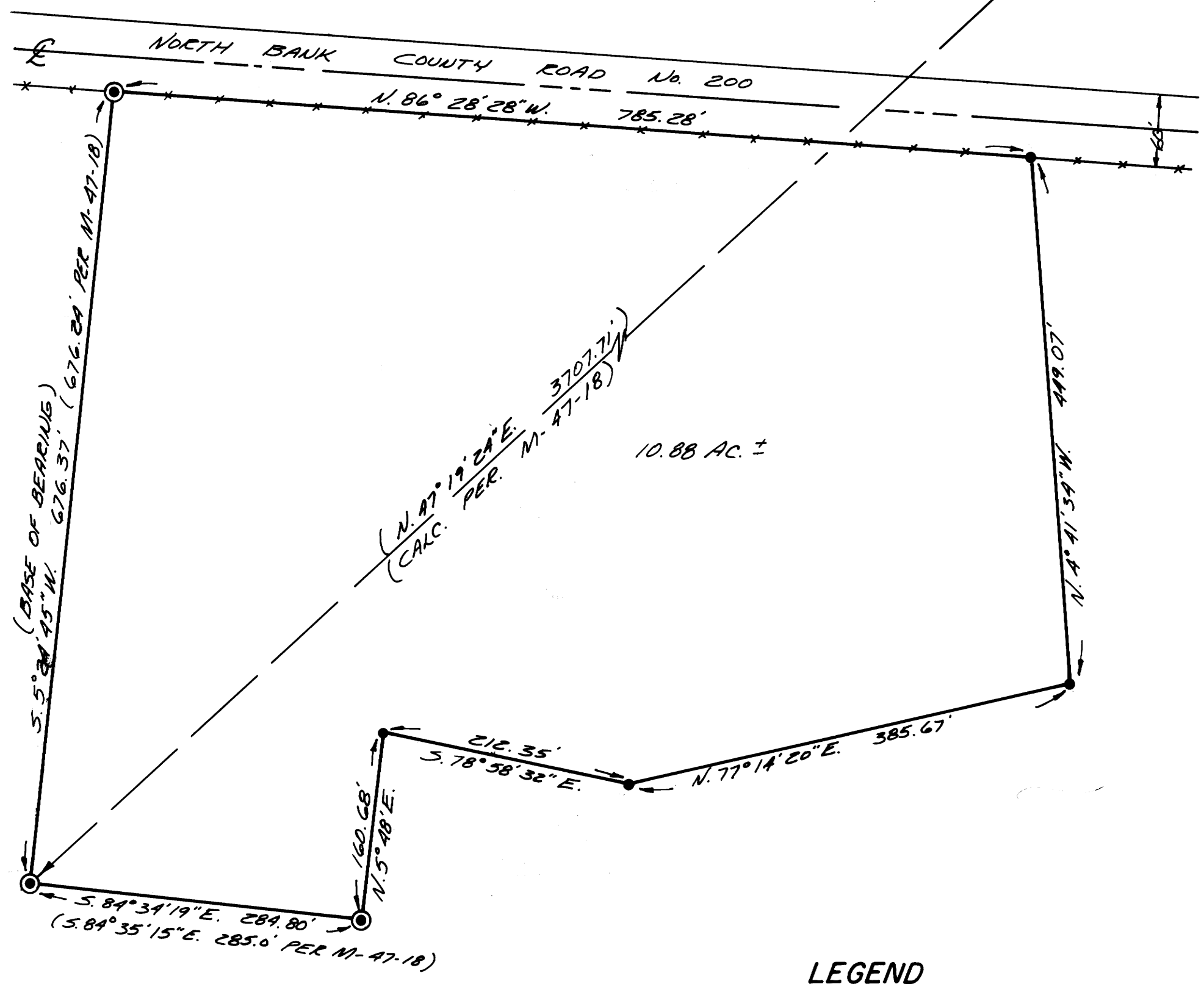
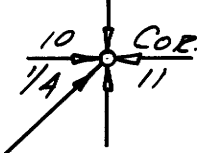
COUNTY SURVEYOR  
DOUGLAS COUNTY, ORE  
m&

REGISTERED  
PROFESSIONAL  
LAND SURVEYOR

*Burton W. Holt*

OREGON  
OCTOBER 1, 1957  
BURTON W. HOLT  
418

T.26S., R.4W., W.M.



BASED ON M-47-18

### LEGEND

- — SET 5/8" I.R.
- ⊙ — FD. 5/8" I.R.
- ⊕ — SEC. COR. CALC./M-47-18