

# SURVEY IN SEC. 11, T24S, R7W, W.M., DOUGLAS CO., OREGON

Surveyed for Lester M. Bullock by Victor M. McLind

August 1973

○ ~ Indicates set  $\frac{5}{8}$ " x 30" Iron Rod  
 ○ ~ Indicates corner calculated but not set  
 Bearings are based on Douglas Co. Flood Plane Survey monuments  
 U-32-U-33 rotated to true.

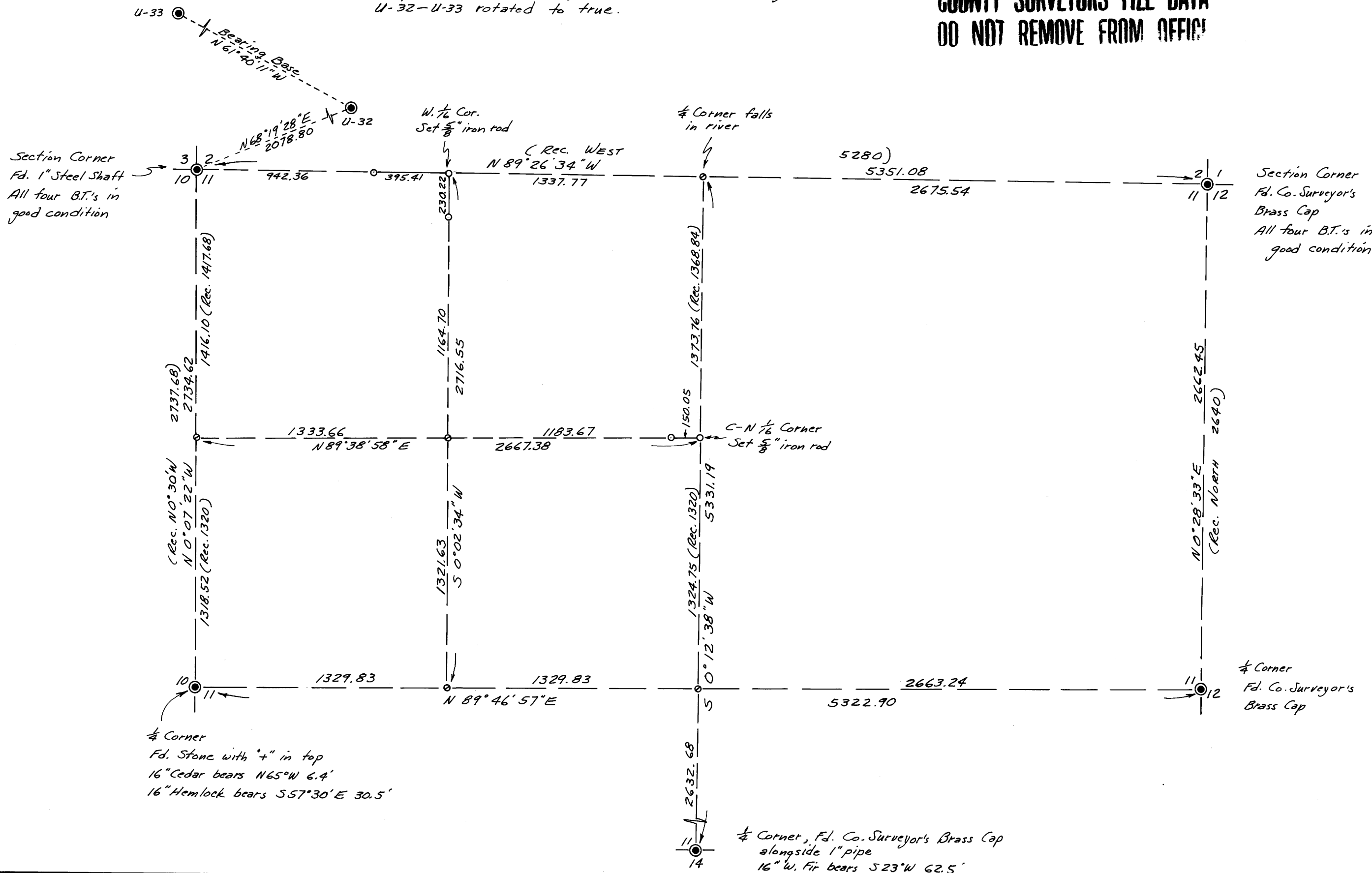
Scale: 1"=500'

**COUNTY SURVEYORS FILE DATA  
DO NOT REMOVE FROM OFFICE**

FILED  
RECEIVED

SEP 7 1973

COUNTY SURVEYOR  
DOUGLAS COUNTY, ORE.  
M.L.



MAP FILE M50 - 59

MAP FILE M50 - 59