

COUNTY SURVEYORS FILE DATA
DO NOT REMOVE FROM OFFICE

FILED
RECEIVED M&L

AUG 23 1973

COUNTY SURVEYOR
DOUGLAS COUNTY, ORE
M&L

SURVEY IN SECTIONS 4 & 9, T27S, R6W, W.M.

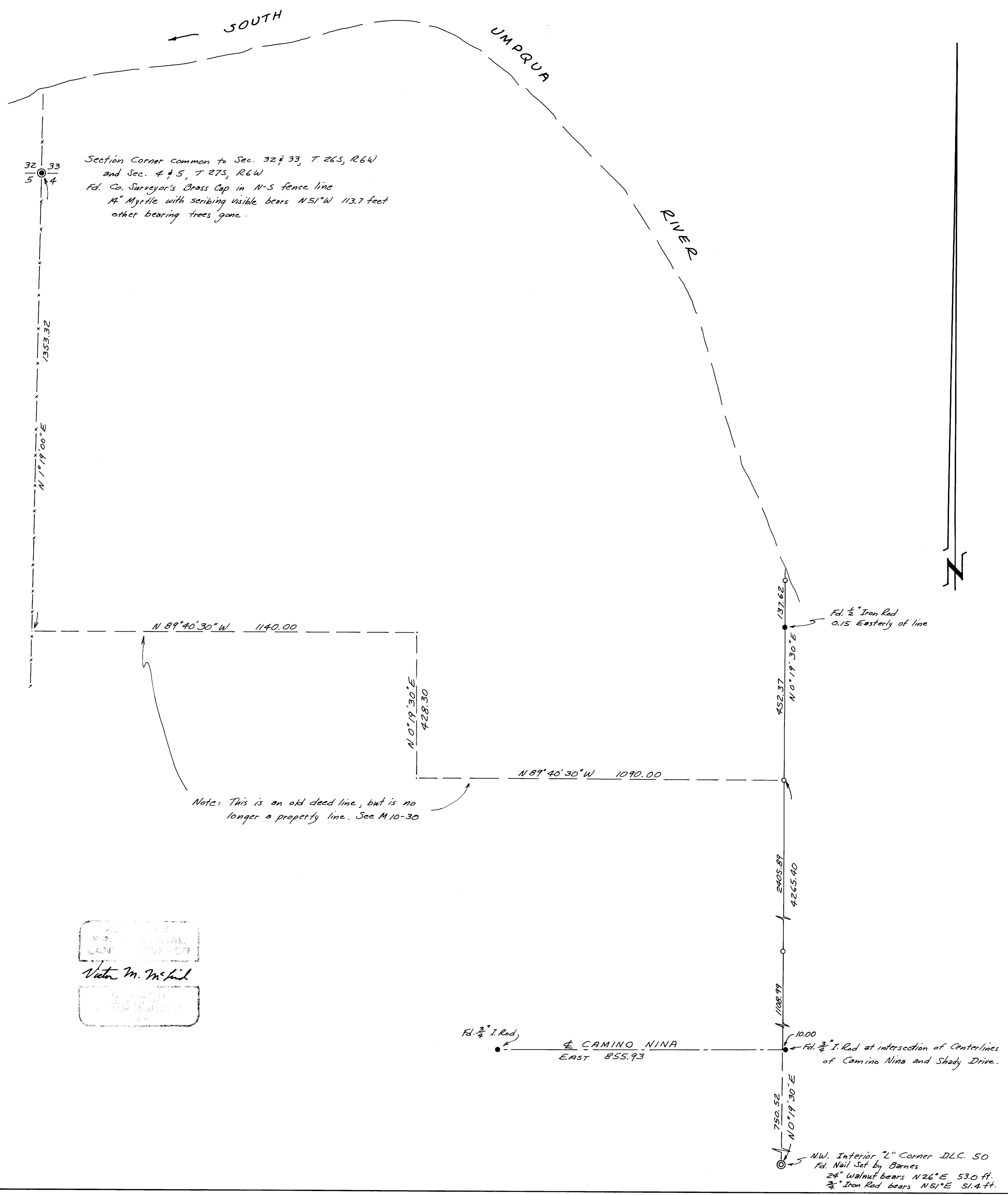
Surveyed for Frank Guido by Victor M. McLind

August 1973

Scale: 1" = 200'

Bearings are based on the centerline of Camino Nina as per plat of "Willow Ranch Subdivision"

o ~ Indicates Set $\frac{3}{8}$ " x 30" Iron Rod



Victor M. McLind
 COUNTY SURVEYOR
 DOUGLAS COUNTY, ORE